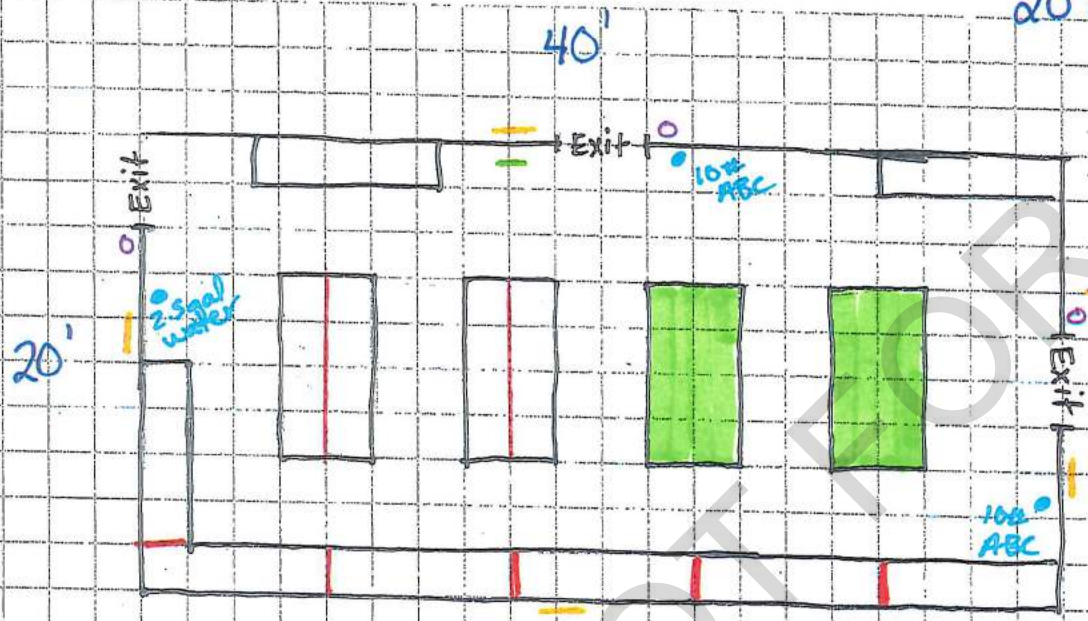


Application Check list for **Temporary Tent** floor plan. (Refer to code sections for specific requirements)

- The drawing needs be on graph paper
- The drawing needs to be done to scale
- The drawing needs dimensions listed
- The drawing needs to show the direction the building faces
- List hours of operations (7.4.8.3)
- List building area in square ft. (7.3.6, 7.3.9)
- List retail area in square ft. (7.4.5)
- List display area in square ft. (7.4.10)
- List open floor area in square ft. (7.3.20)
- Draw interior layout (7.3.14, 7.3.20)
- Label the location of the cash register
- Label overall building dimensions
- Label the location of openings and widths (7.4.8.5)
- Label location of fire extinguishers and types (7.3.8)
- Label location of all required postings (7.3.11, 7.3.13, 7.4.8.2)
- Label location of exit signs (7.3.14.5.1, 7.3.14.5.2)
- Label location of interior and exterior egress lighting (7.3.14.6.1, 7.3.14.6.2)
- Label Flame break locations (7.3.15, 7.4.11)
- Label the intended use of all sales display that do not require flame breaks (7.3.15, 7.4.11)
- The drawing must be clear, legible, and as detailed as possible
- Read NFPA 1124 Permanent Facility Compliance List
- Other information may be required during the review process

20' x 40' Tent



1234 Fireworks Rd
Anytown IA 50000

□ = 2' x 2'

Tent Area: 800 SF
Retail Area: 800 SF
Display Area: 256 SF
Floor Area: 544 SF

Business Hours
10AM - Dusk
* NOT open after Dusk

- = Flame Break
- = No Smoking Signs
- = Evacuation Path
- = No Fireworks Discharge w/ 300' sign
- = Fire Extinguisher
- Exit: Exit sign
- = Packaged Fireworks Display

- * All exits 44" or more
- * No merchandise over 6' off the ground
- * No table over 6' off the ground

20'x50' Tent



1234 Fireworks Rd
Anytown, IA 50000

□ = 2'x2'

Tent Area: 1000 SF
Retail Area: 1000 SF
Display Area: 224 SF
Floor Area: 776 SF

Business Hours
10AM - Midnight

* Open After Dusk

- Flame break
- o No smoking sign
- Evacuation Plan
- No Fireworks Discharge w/ 300' sign
- o = Fire Extinguisher
- Exit: Illuminated Exit sign & Emergency lighting unit w/ battery back up

* All Exits 44" or more

* No merchandise over 6' off the ground

* No tables over 6' off the ground

30' x 30' Tent

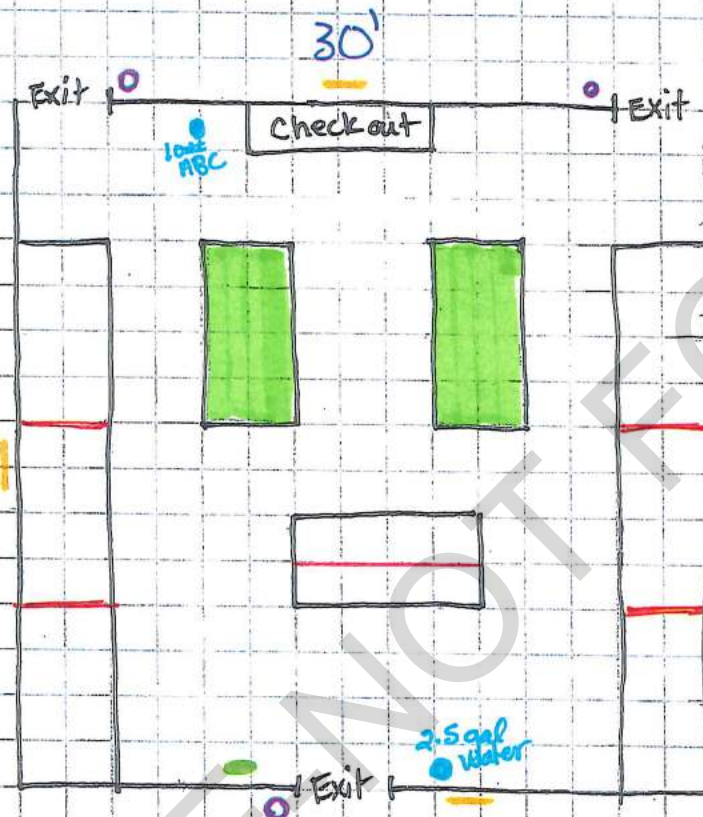
1234 Fireworks Rd
Anytown, IA 50000

Tent Area: 900 SF
Retail Area: 900 SF
Display Area: 288 SF
Floor Area: 596 SF

Hours of Operation

10AM - Dusk

* Not open after Dusk



Exit = Exit Sign

- = Flame Break

● = Fire Extinguisher

● = Evacuation Plan

- = No Fireworks Discharge w/ 300 ft

○ = No Smoking Signs

* No merchandise over 6' tall

* No tables over 6' tall

* All exits are 44" or more

□ = 2' x 2'

■ = Packaged Fireworks Display

1254 Anyroad Ave
Anywhere, IA 50000

30' x 40' Tent

Exit = Illuminated Exit Sign
Emergency light
w/ Battery Backup

— Flame Break

— No Fireworks
Discharge w/ 300ft

• Evacuation
Plan

• Fire Extinguisher

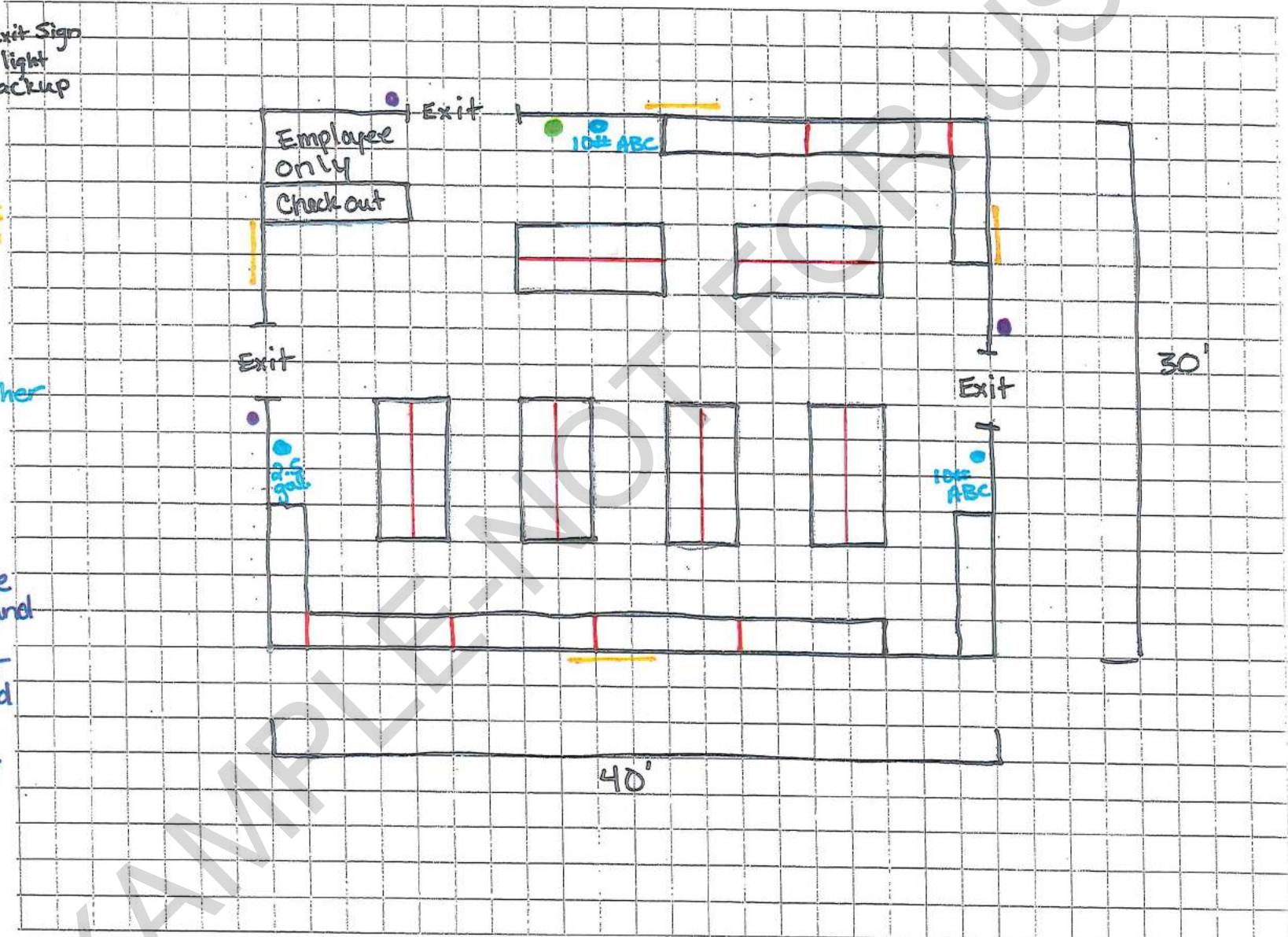
• Fireworks -
No Smoking

Notes

* No Merchandise
over 6' off ground

* No tables over
6' off the ground

* All exits 44" or
more



□ = 2' x 2'

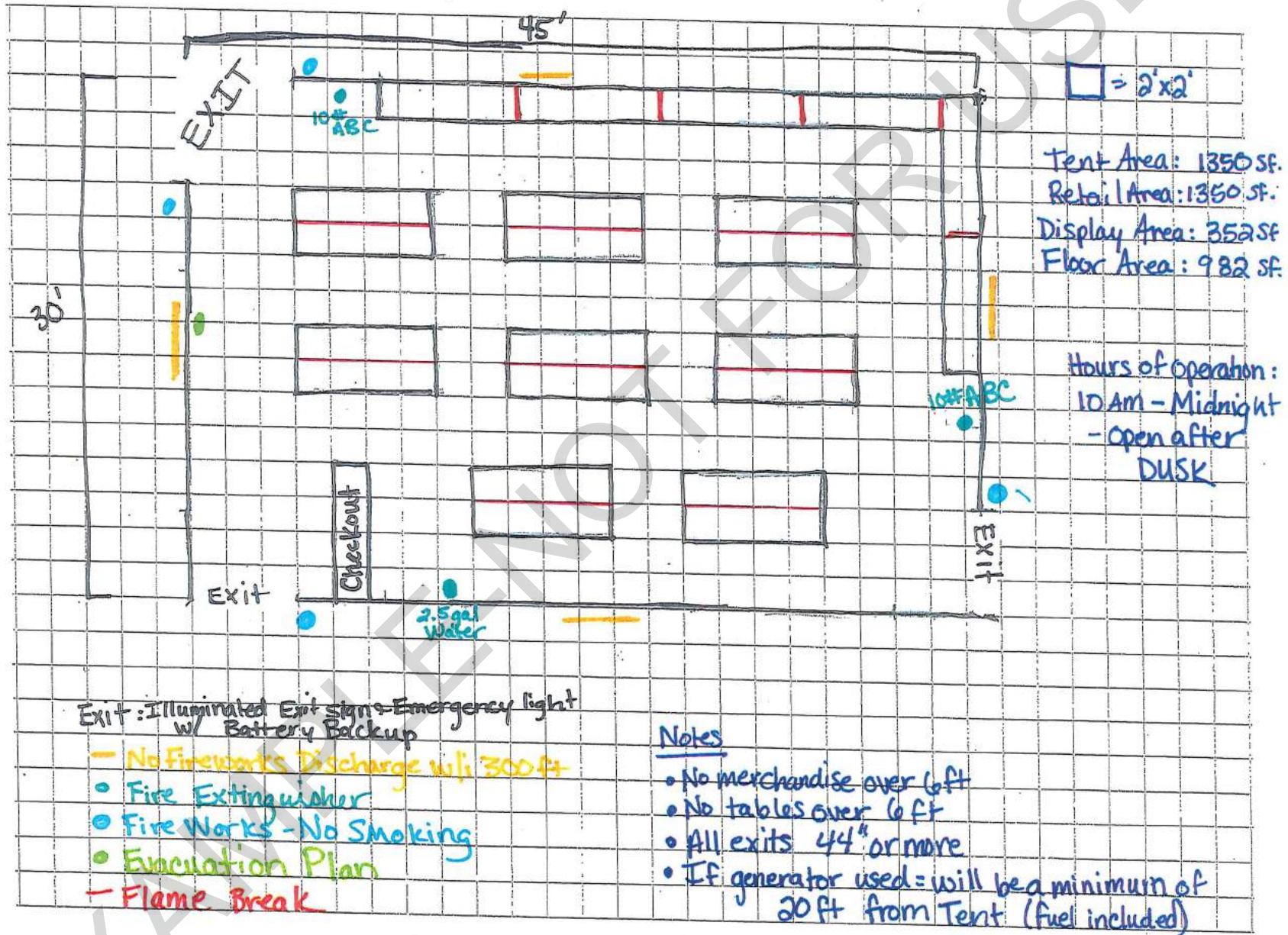
Tent Area: 1200 SF
Retail Area: 1200 SF
Display Area: 336 SF
Floor Area: 842 SF

Hours of operation: 10 AM - Midnight

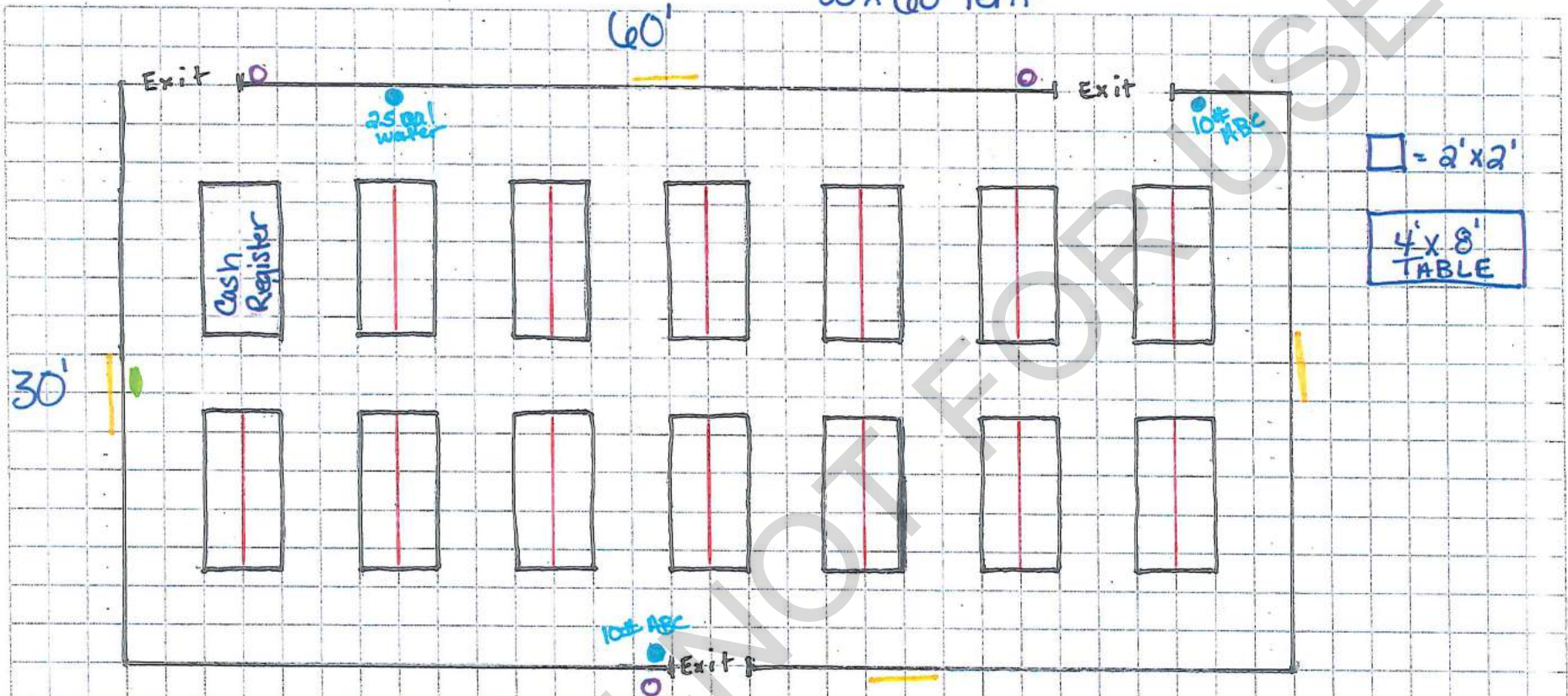
* OPEN AFTER DUSK

1234 Anyroad Ave
Anywhere, IA 50000

30' x 45' Tent



30' x 60' Tent



1234 Fireworks Rd
Anywhere, IA 50000

Tent Area: 1800 SF
Retail Area: 1800 SF
Display Area: 416 SF
Floor Area: 1352 SF

- * No Merchandise over 6'
- * No Tables over 6'
- * All exits 44" or more
- * All aisles are 48" or more

Hours of Operation
10 AM - Midnight
* Open After Dusk

- Exit = Illuminated Exit sign & emergency lighting w/ battery Back up
- = Fire Extinguisher
- = No Fireworks Discharge w/ 300ft
- = Evacuation Plan
- = No Smoking Signs
- = Flame Break

Anywhere, IA 50000

40' x 50' Tent

Exit = Illuminated Exit Sign
Emergency lighting unit
w/ battery backup

— Flame Break

— No Fireworks
Discharge w/ 300ft

• Evacuation Plan

• Fire Extinguisher

• Fireworks -
No Smoking

Notes

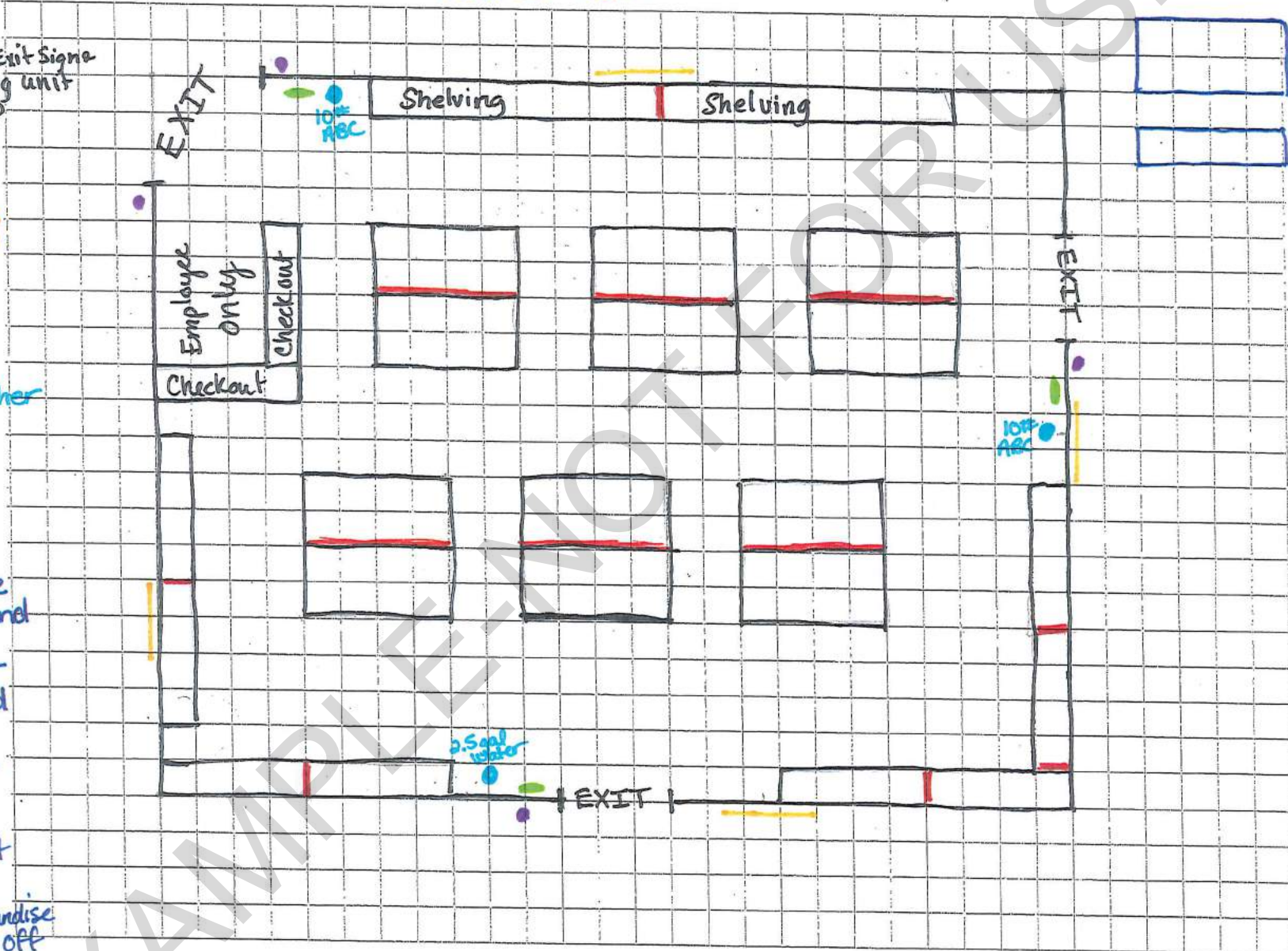
* No Merchandise
over 6' off ground

* No tables over
6' off the ground

* All exits 44" or
more

* Shelving units Not
more than 12' off
the ground w/ Merchandise
Not more than 6' off
the ground

□ = 2' x 2'



= 4' x 8'
FW Table

= 2' x 8'
Table

Tent Area: 2000 SF
Retail Area: 2000 SF
Display Area: 576 SF
Floor Area: 1392 SF

Hours of operation: 10 AM - Midnight
* Open After Dusk

40'x55' Tent

1234 Fireworks Ave
Anytown, IA 50000

□ = 2'x2'

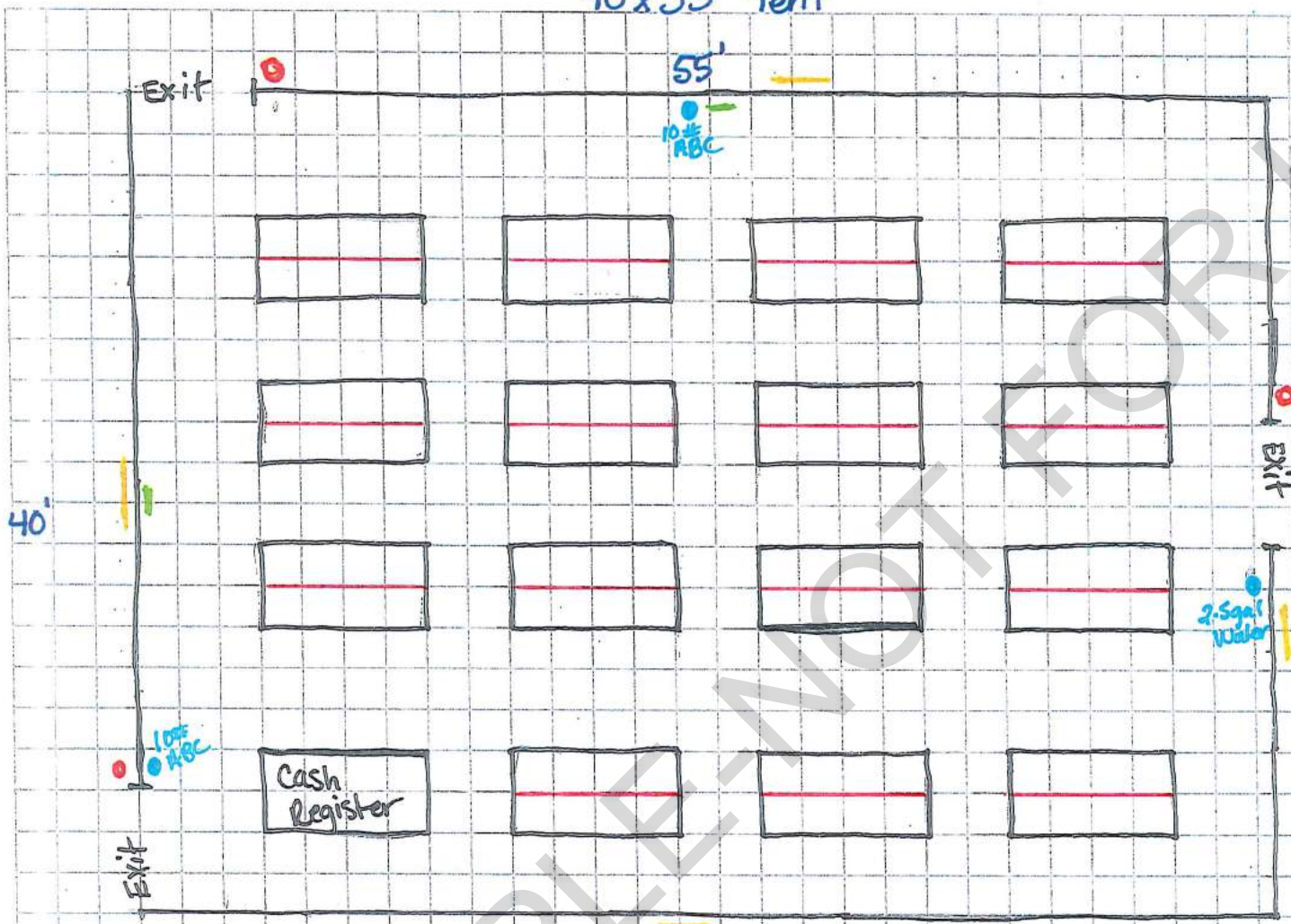
Tent Area = 2200 SF
Retail Area = 2200 SF
Display Area = 480 SF
Floor Area = 1688 SF

Business Hours
10 AM - Midnight
* Open AFTER Dusk

- = Evacuation Plan
- = Fire Extinguisher
- = No Smoking signs
- ⚡ = No Fireworks Discharge w/ 300'

Exit = Illuminated Exit sign
? Emergency lighting unit
w/ battery backup

- Flame Break



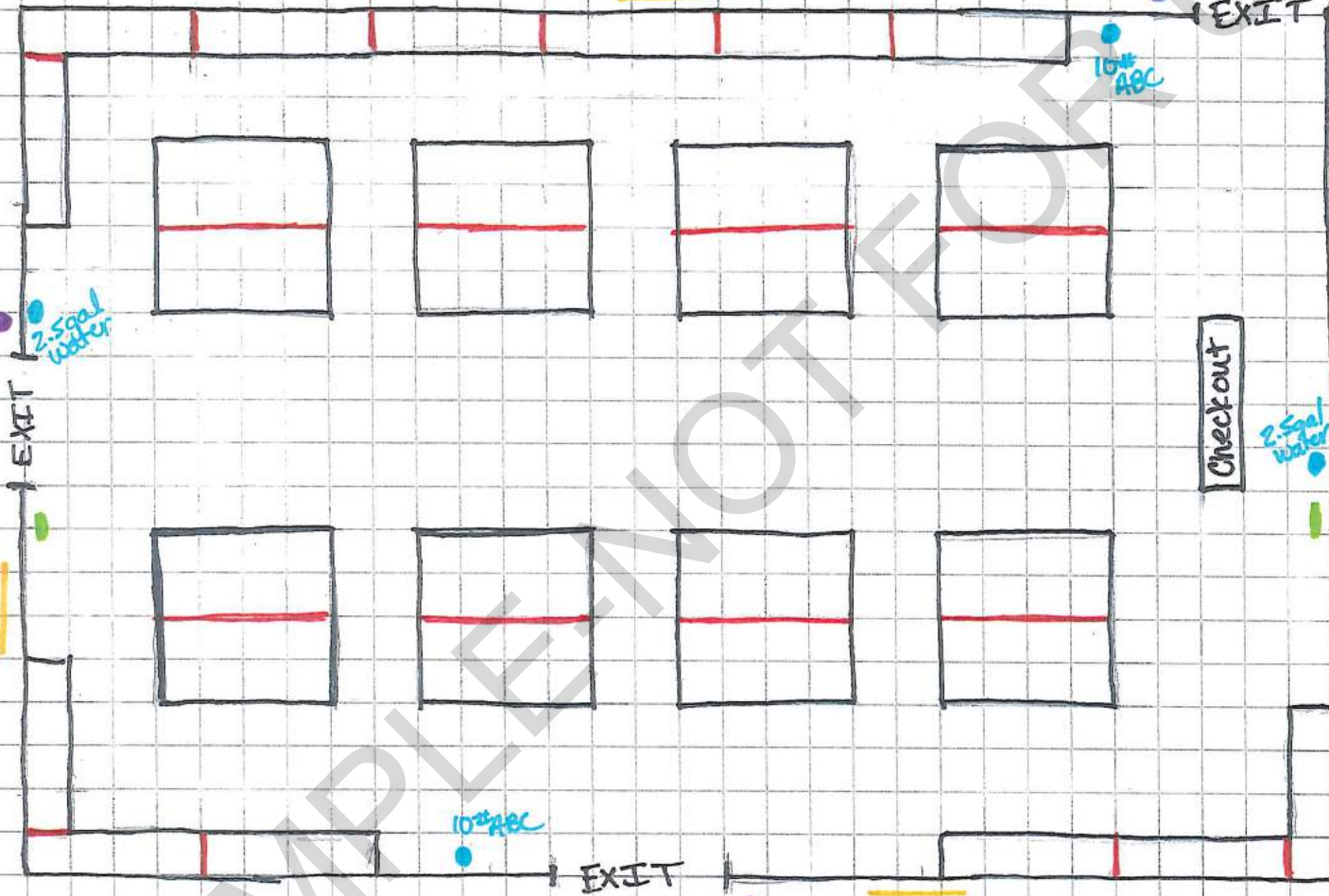
* No Merchandise or table height over 6' off the ground.

* All exits 44" or greater

4'x8'
Table

1234 Anyroad
Anywhere, IA 50000

40' x 60' Tent



- = Evacuation Plan
 - = Flame Break
 - = No Smoking sign
 - = No Fireworks Discharge w/ 300'
 - = Fire Extinguisher
- Exit: Illuminated Exit sign & emergency light w/ battery backup

Notes
 * No merchandise over 6'
 * No tables or shelving over 6'
 * All exits 44" or more

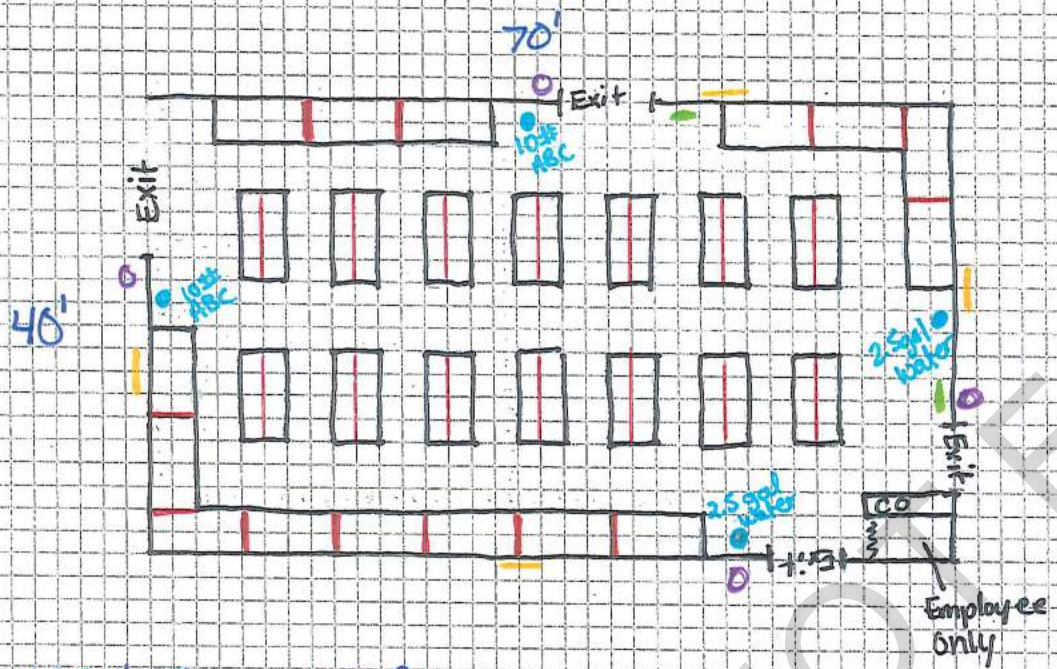
□ = 2' x 2'

Hours of Operation:
 10AM - Midnight
 * Open after Dusk

Tent Area: 2400 SF
 Retail Area: 2400 SF
 Display Area: 720 SF
 Floor Area: 11664 SF

▭ = 4' x 8' table
 ▭ = 2' x 8' table

40' x 70' Tent



- CO = Check Out
- = Flame Break
- = No Smoking Signs
- = Fire Extinguisher
- = Evacuation Plan
- = No Fireworks Discharge W/ 300' signs

Exit = Illuminated Exit sign & Emergency lighting unit w/ battery backup

1234 Fireworks St
Anytown, IA 50000

* No merchandise over 6' off the ground

* All exits 44" or more

□ = 2' x 2'

Tent Area: 2800 SF
Retail Area: 2800 SF
Display Area: 928 SF
Floor Area: 1856 SF

Business Hours
10 AM - Midnight

* * Open After Dusk

40' x 80'

40' x 80' Tent

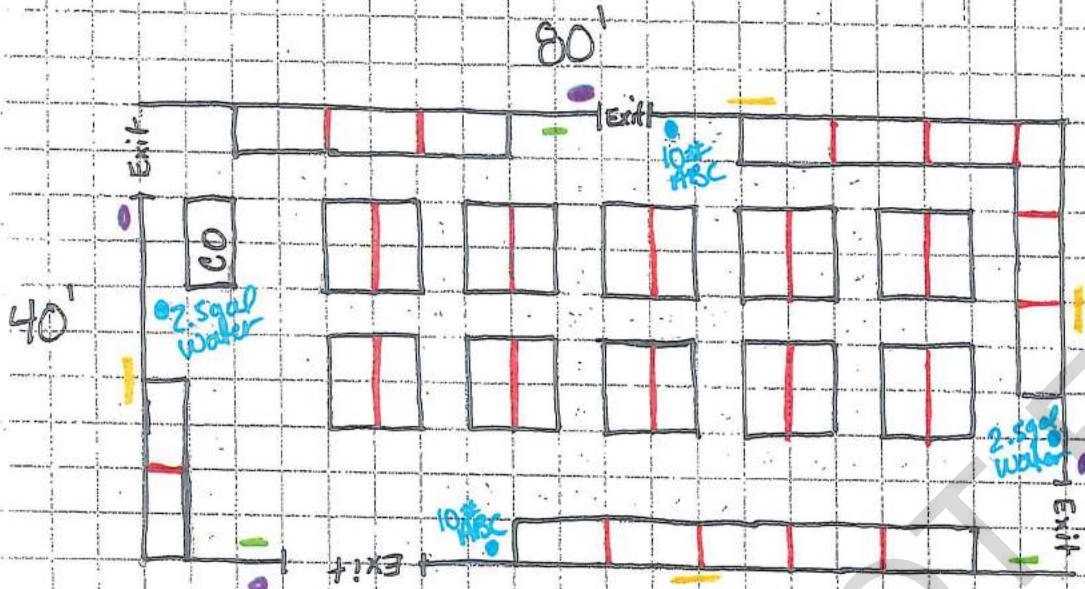
1234 Fireworks St
Anytown, IA 50000

□ = 4' x 4'

Tent Area: 3200 SF
Retail Area: 3200 SF
Display Area: 1152 SF
Floor Area: 2016 SF

Hours of Operation
10 AM - Midnight

** Open After Dusk

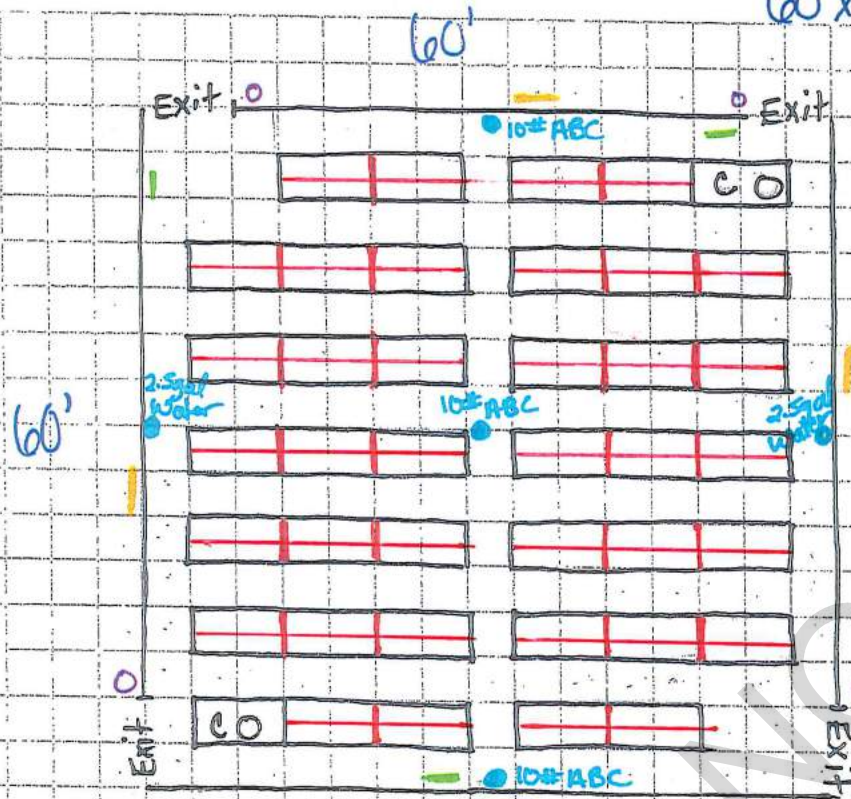


- = Flame Break
- = Fire extinguisher
- ⊙ = No Smoking Signs
- = Evacuation Plan
- = No Fireworks Discharge w/ 300'

Exit = Illuminated Exit Sign & Emergency lighting unit w/ battery backup

- * No merchandise over 6' off the ground
- * No tables over 6' off the ground.

60' x 60' Tent



1234 Fireworks Rd
Anytown, IA 50000

Tent Area: 3600 SF
Retail Area: 3600 SF
Display Area: 1216 SF
Floor Area: 2320 SF

□ = 4' x 4'

Business Hours

10AM - Midnight
* open AFTER Dusk

- CO = Check Out
- = Flame Break
- = Fire Extinguisher
- = Evaluation Plan
- = No Fireworks Discharge w/ 300' sign
- = Fireworks - No Smoking sign

Exit = Illuminated Exit sign & Emergency lighting unit w/ battery Backup

* All exits 44" or more

* No merchandise over 6' off the ground

* No tables over 6' off the ground

60' x 80' Tent

1234 Fireworks Rd
Anytown, IA 50000

□ = 4' x 4'

Tent Area: 4800 SF
Retail Area: 4800 SF
Display Area: 1568 SF
Floor Area: 3168 SF

Business Hours:

10 AM - Midnight

* Open After Dark

* No merchandise over 6' off the ground

* No tables over 6' off the ground

* All exits 44" or more

60'

80'



Exit = Illuminated Exit Sign & Emergency lighting unit w/ battery backup

● = Fire Extinguisher

● = No Fireworks Discharge w/ 300' signs

● = Evacuation Plan

○ = Fireworks - No Smoking Sign

- = Flame Break

CO = Check Out

■ = Packaged Fireworks Display