

# **IOWA PHARMACIST TRACKING SYSTEM**

**ADVISORY COMMITTEE MEETING  
December 11, 2015**

**Iowa Health Professions Tracking Center  
Office of Statewide Clinical Education Programs  
The University of Iowa  
Carver College of Medicine**

Iowa Pharmacist Tracking System Advisory Committee  
Friday, December 11, 2015  
1:30 P.M. – 3:00 P.M.

Carver College of Medicine  
264 CMAB

— **Agenda** —

- I. Welcome and Introductions
- II. Meeting Agenda and Participant List
- III. 2014 Annual Report
  - Annual Benchmarks
  - Geographic Distribution
  - Access Summary
  - Trends
  - Workforce Summary
- IV. Open Discussion Items

# Iowa Pharmacist Tracking System Advisory Committee

Friday, December 11, 2015

1:30 P.M. – 3:00 P.M.

264 College of Medicine Administration Building

## Advisory Committee

Michael Andreski, RPh, PhD  
Assistant Professor of Social and Administrative Pharmacy  
Drake University College of Pharmacy and Health Sciences

Jay D. Currie, BS Pharm, PharmD, FCCP, FAPhA  
Clinical Professor, Applied Clinical Sciences  
Chair, Department of Pharmacy Practice and Science  
University of Iowa College of Pharmacy

Barbara Kelley, BBA, BA  
Strategic Communications Director  
University of Iowa College of Pharmacy

Michael W. Kelly, PharmD  
Associate Dean, Academic Affairs  
Clinical Professor, Applied Clinical Sciences  
Associate Dean for Professional Education  
University of Iowa College of Pharmacy

Anthony Pudlo, PharmD, MBA  
Vice President of Professional Affairs  
Iowa Pharmacy Association

Therese (Terry) Witkowski  
Executive Officer  
Iowa Board of Pharmacy Examiners

## Office of Statewide Clinical Education Program Iowa Health Professions Tracking Center

Theresa Dunkin  
Program Manager/Assistant Director

Carole Kron  
Data Analyst/Assistant Manager

Greg Nelson, MA, RN  
Assistant Dean for Clinical Education Programs

Linda Thiesen  
Data Analyst/Assistant Manager

# Iowa Pharmacist Tracking System

Advisory Committee Meeting

November 10, 2014

<p><b>Advisory Group Members Present:</b> Michael Andreski Jay Currie Michael Kelly Anthony Pudlo Terry Witkowski</p> <p><b>Absent:</b> Barbara Kelley</p>	<p><b>OSCEP Staff Present:</b> Theresa Dunkin Carole Kron Greg Nelson Linda Thiesen</p>	<p><b>Called to order:</b> 1:30 P.M.</p> <p><b>Adjourned:</b> 2:55 P.M.</p> <p><b>Location:</b> UI College of Medicine 2164 CMAB Iowa City, IA 52242</p> <p><b>Prepared by:</b> Linda Thiesen</p>
<b>AGENDA</b>	<b>DISCUSSION</b>	<b>ACTION/DEADLINE/WHO</b>
<b>I. Welcome</b>	<p>C. Kron welcomed the attendees.</p> <p>A subset of graphics will be reviewed during the meeting. Complete graphic set is contained in the Annual Report.</p>	
<b>II. Minutes</b>	<p>The minutes from the December 5, 2013 meeting were approved as written.</p>	
<b>III. OSCEP Reports</b>	<p>2,901 active pharmacists were identified as of December 31, 2013. The net gain of 10 is the difference between 180 pharmacists who entered the workforce and 170 pharmacists who left. This is increase of 24% since 1996.</p>	

<p><b>B. Geographic Distributions</b></p>	<p>Last year's reported pharmacist number for 2012 was 2,867 – this year's adjusted total for 2012 is 2,891, an increase of 24.</p> <p>The 'Adds' this year were 13% higher and the 'Deletes' were 37% higher than the 10-year average.</p> <p>All counties in Iowa have at least 2 pharmacists, with the exception of Butler County.</p> <p>Of Iowa's 947 communities, there are 229 communities with pharmacists. From the 1998 high of 255 communities with one or more pharmacists, there has been a decrease of 9%. There continues to be a decrease in independent pharmacists.</p> <p>Though the overall net gain was only 10, there was considerable activity in the workforce: 2013 had 180 pharmacists entering the Iowa workforce compared to only 152 in the previous year. The number of those leaving the workforce was also higher: 170 pharmacists terminated or left the Iowa workforce compared to 121 in 2012.</p> <p>The attrition analysis showed a significant number of retirements - 77 - compared with 43 for the prior year. Is there more detail regarding 'inactives'? What are the ages? Are they really professionally inactive or are they retirements?</p> <p>What is the mean retirement age for all the health professions?</p>	<p><b>OSCEP</b></p> <p><b>OSCEP</b></p>
---	---	---



<p><b>IV. Other Discussion Items</b></p>	<p>Discussion of new roles for pharmacists and . possible modification to data fields to reflect new practice types and/or activities such as pharmacist working in physician practice, ambulatory care, consultative, LTC, and MTM. IPA is continuing to work on changes to professional activity descriptors that may be used or modified for the tracking system.</p> <p>Also interest in retirement boom – at what level will it continue? Interest comparing all health care provider types with a specific chart for retirees?</p>	<p><b>OSCEP</b></p>
<p><b>V. Next Meeting Date and Location</b></p>	<p>To be scheduled.</p>	

# IOWA PHARMACISTS

## Annual Workforce Report

<u>Date</u>	<u>Pharmacists</u>
• December 2014	2894
• January 2014	<u>-2909</u>
<b>Net Gain/Loss</b>	<b>-15</b>



# IOWA PHARMACISTS

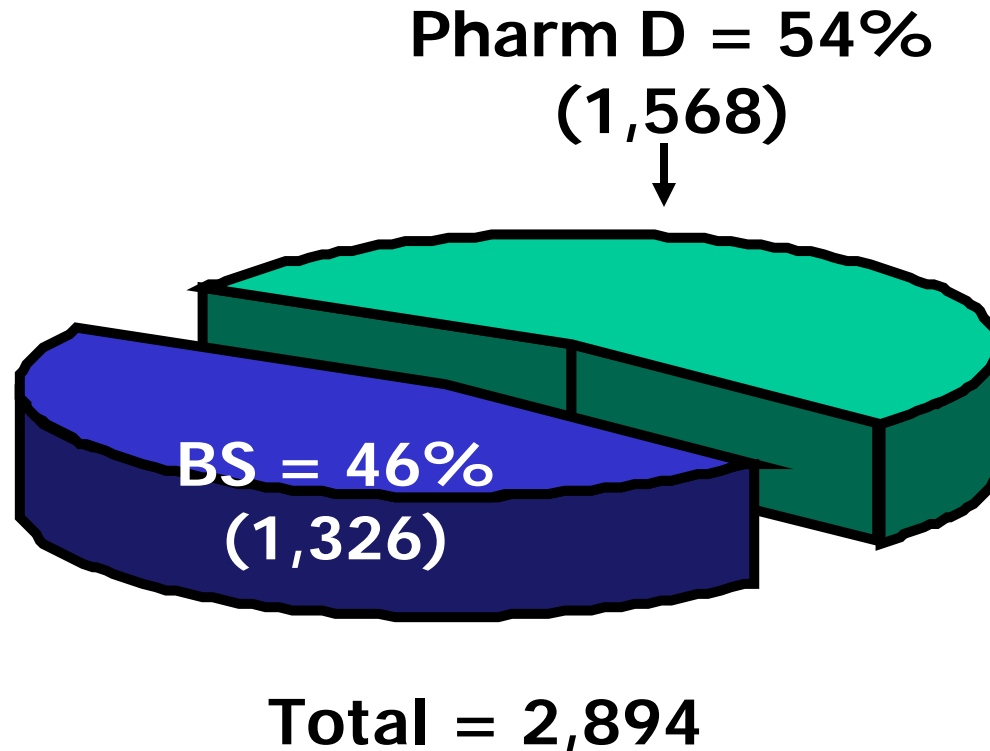
## Entering vs. Terminating Practice

	<u>2014</u>	<u>Prior Year</u>	<u>Ten-Year Average</u>
Pharmacists Entering	177	204	166
Pharmacists Terminating	<u>-192</u>	<u>-193</u>	<u>-134</u>
Net Gain/Loss	-15	+11	+32

# IOWA PHARMACISTS

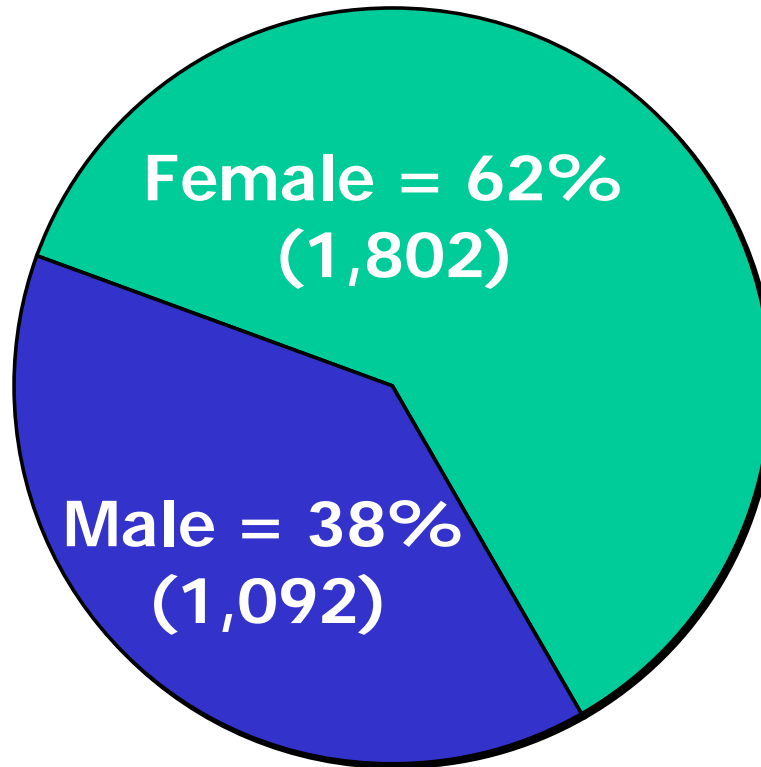
## Pharmacy Degree

### 2014



# IOWA PHARMACISTS

## Gender 2014

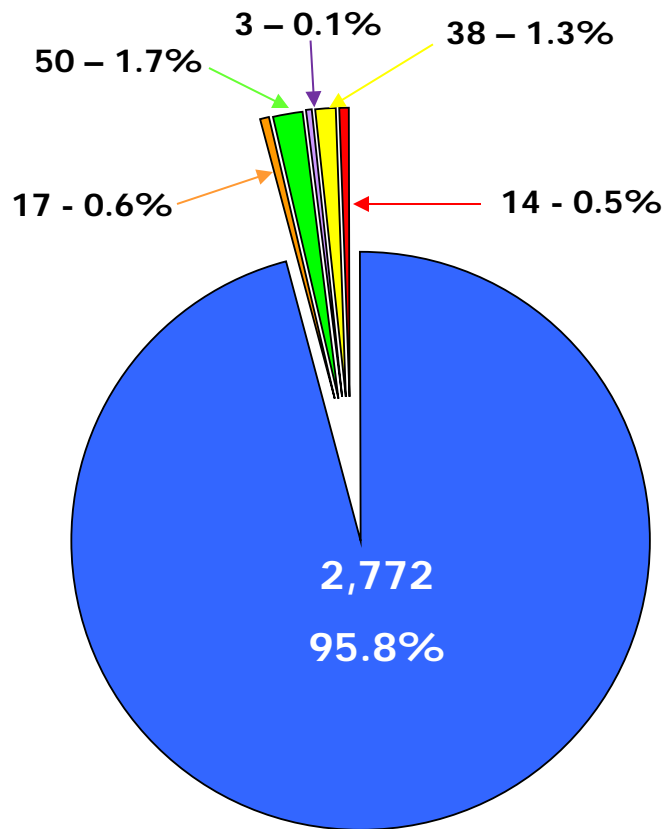


**Total = 2,894**

# IOWA PHARMACISTS

## Ethnic Codes

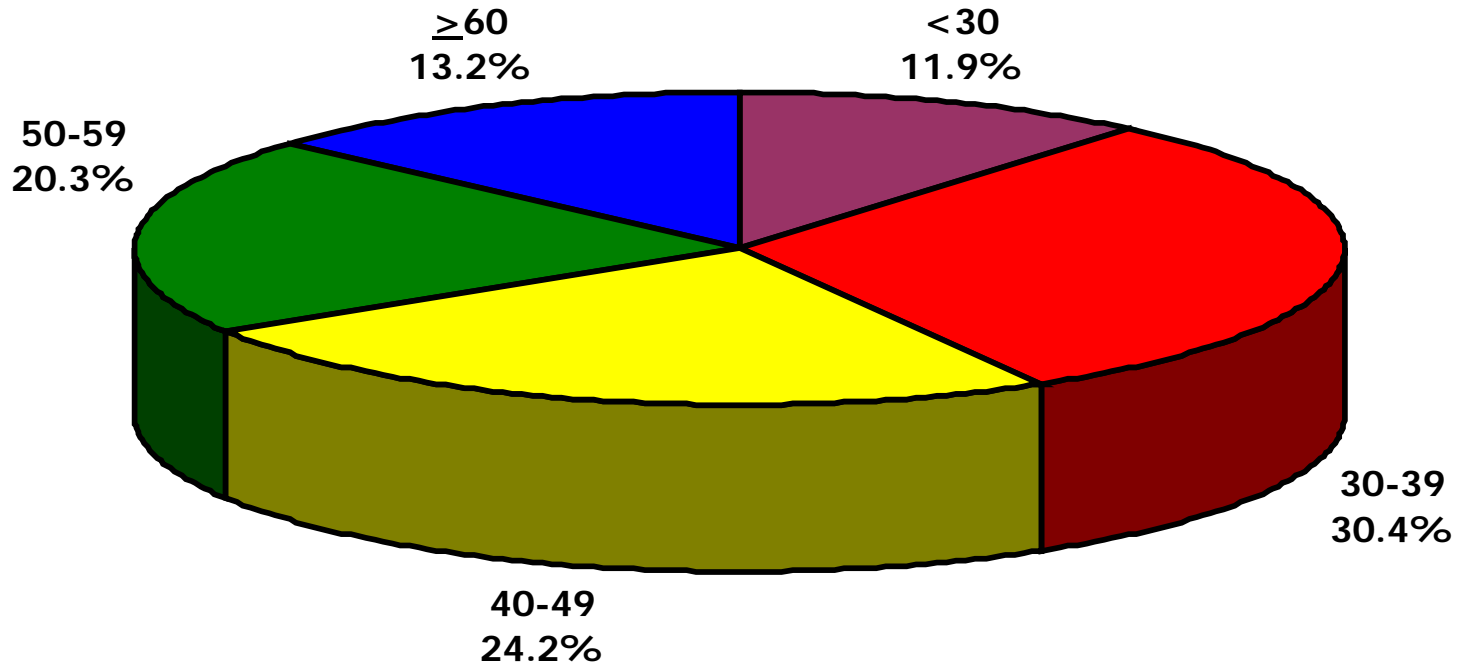
### 2014



- White
- African American
- Asian or Pacific Islander
- American Indian
- Other
- Hispanic

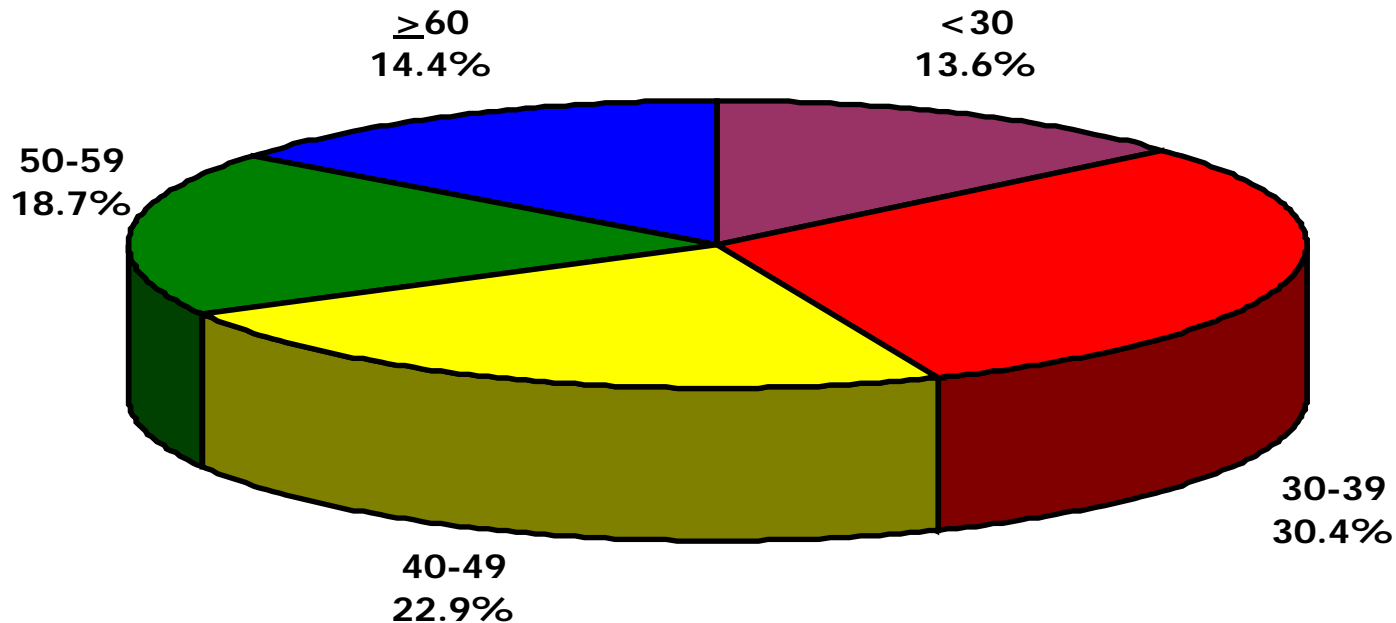
# AGE DISTRIBUTION OF IOWA PHARMACISTS 2014

<u>Age Category</u>	<u>Number</u>	<u>Percent</u>	<u>Cumulative %</u>
< 30	345	11.9	11.9 %
30-39	881	30.4	42.3
40-49	700	24.2	66.5
50-59	587	20.3	86.8
≥ 60	<u>381</u>	<u>13.2</u>	100.0%
	2,894	100.0%	



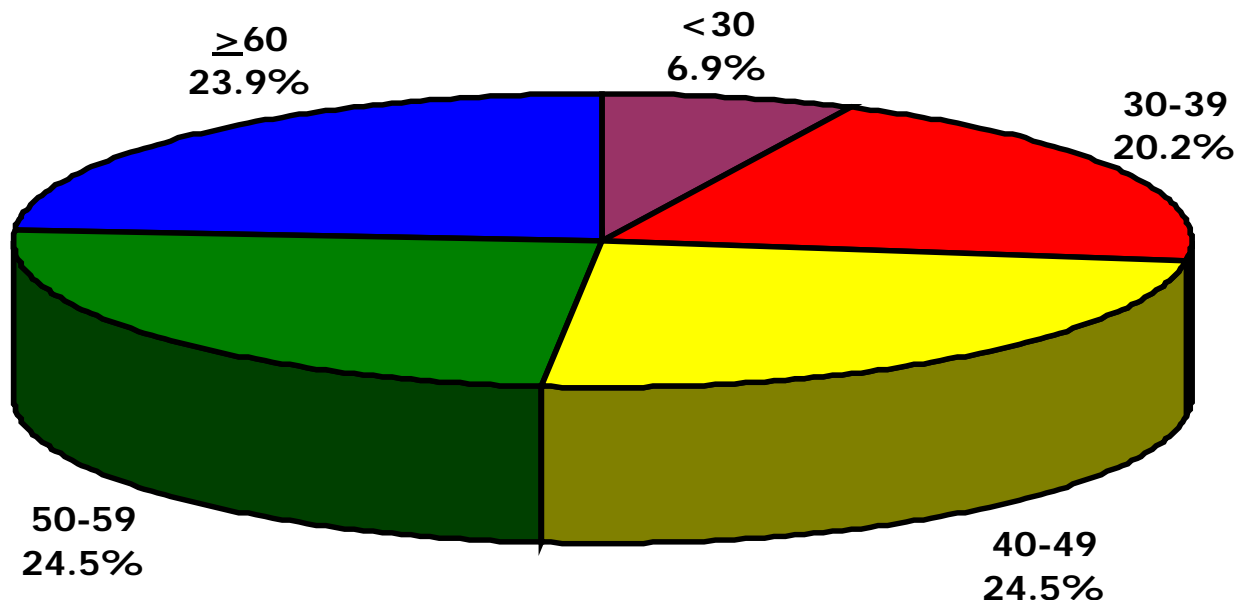
# AGE DISTRIBUTION OF IOWA COMMUNITY PHARMACISTS 2014

<u>Age Category</u>	<u>Number</u>	<u>Percent</u>	<u>Cumulative %</u>
< 30	231	13.6	13.6%
30-39	517	30.4	44.0
40-49	388	22.9	66.9
50-59	317	18.7	85.6
≥ 60	<u>244</u>	<u>14.4</u>	100.0 %
	<b>1697</b>	<b>100.0 %</b>	



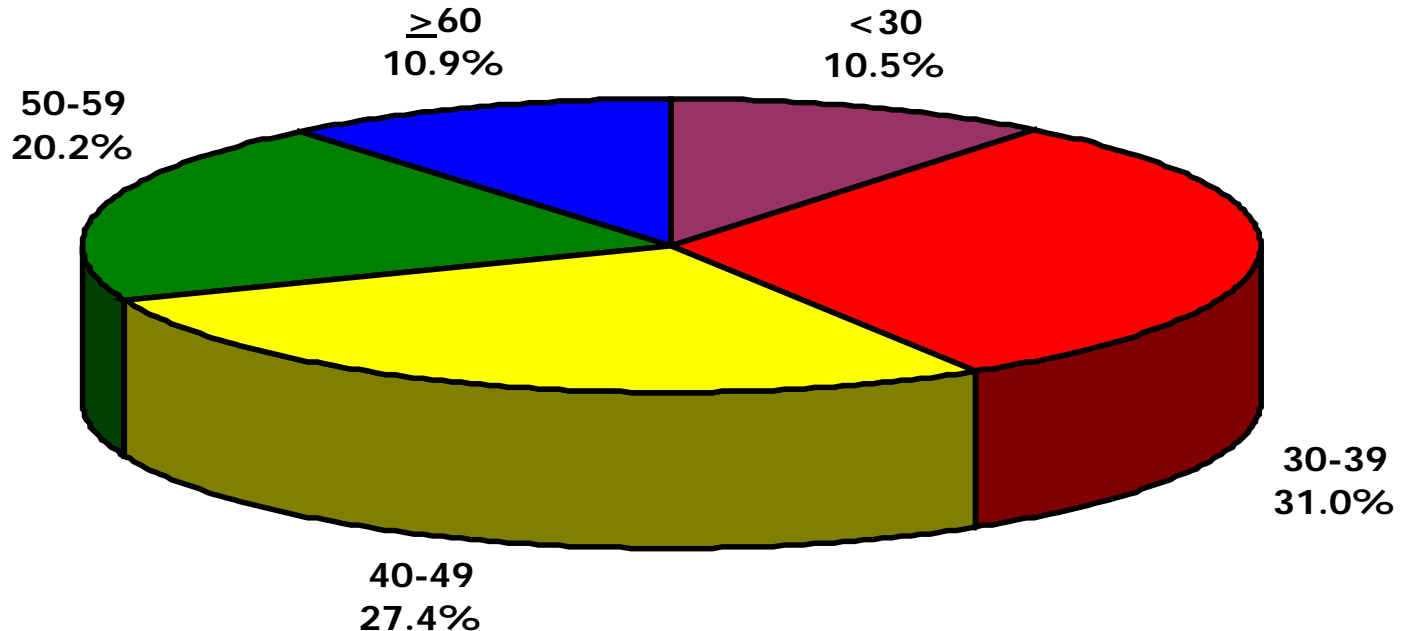
# AGE DISTRIBUTION OF IOWA INDEPENDENT PHARMACISTS 2014

<u>Age Category</u>	<u>Number</u>	<u>Percent</u>	<u>Cumulative %</u>
< 30	24	6.9	6.9%
30-39	71	20.2	27.1
40-49	86	24.5	51.6
50-59	86	24.5	76.1
≥ 60	<u>84</u>	<u>23.9</u>	100.0 %
	351	100.0 %	



# AGE DISTRIBUTION OF IOWA HOSPITAL PHARMACISTS 2014

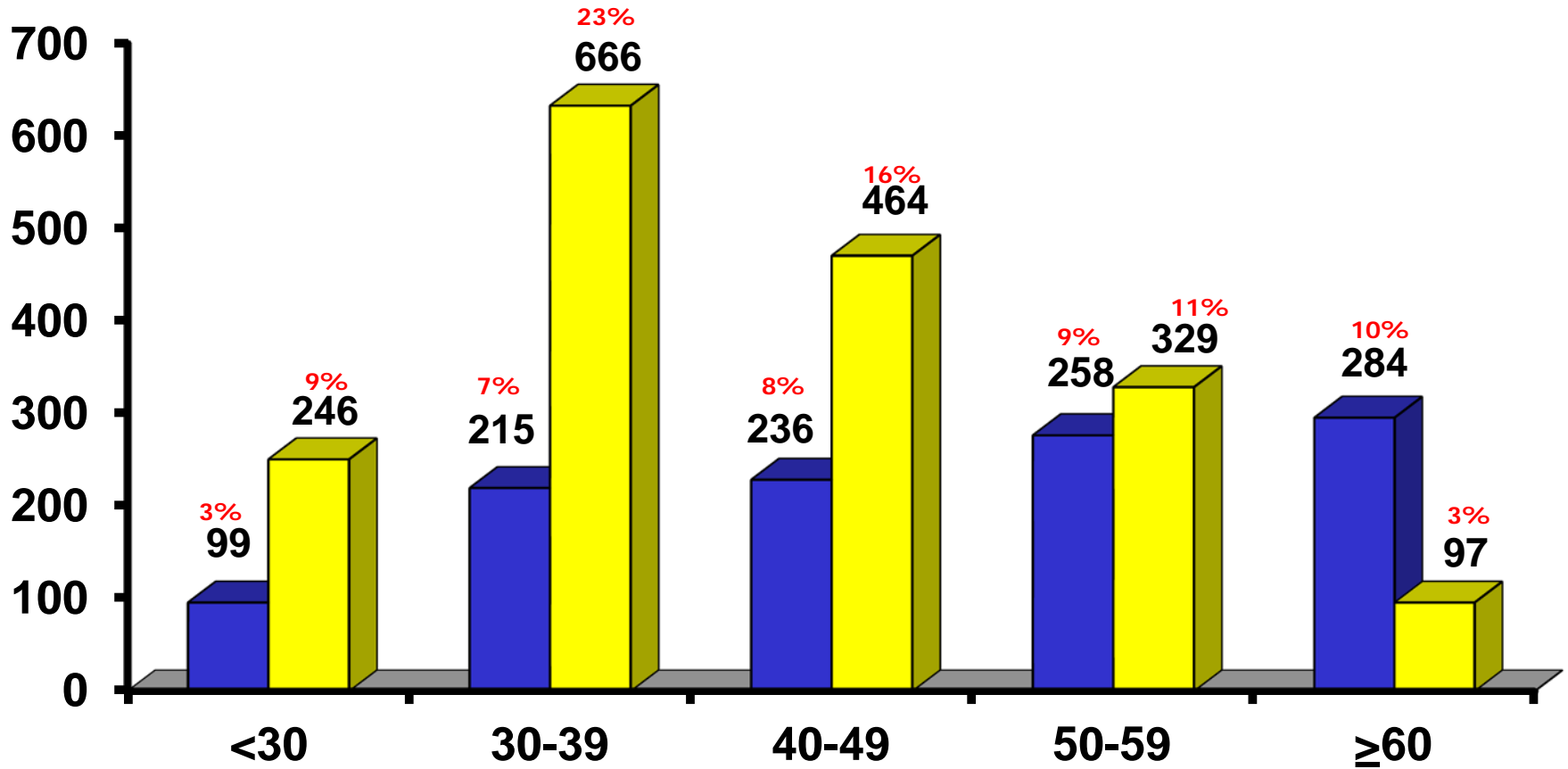
<u>Age Category</u>	<u>Number</u>	<u>Percent</u>	<u>Cumulative %</u>
< 30	76	10.5	10.5%
30-39	224	31.0	41.5
40-49	198	27.4	68.9
50-59	146	20.2	89.1
≥ 60	<u>79</u>	<u>10.9</u>	100.0 %
	723	100.0 %	





# AGE DISTRIBUTION OF IOWA PHARMACISTS

Gender  
2014



# IOWA PHARMACISTS

## Full-Time vs. Part-Time

### Gender

### 2014

	<b>Full-Time*</b>		<b>Part-Time</b>	
	<u>Number</u>	<u>Percent</u>	<u>Number</u>	<u>Percent</u>
<b>Male</b>	991	34.2%	101	3.5%
<b>Female</b>	<u>1492</u>	<u>51.6%</u>	<u>310</u>	<u>10.7%</u>
<b>Total</b>	2483	<b>85.8%</b>	411	<b>14.2%</b>

\*FT ≥ 30 hours/week

# IOWA PHARMACISTS

## Part-Time by Age and Gender

### 2014

<u>Age</u>	<u>Total</u>		<u>Total</u>		<u>PT</u>	
	<u>Male</u>	<u>%</u>	<u>Female</u>	<u>%</u>	<u>Total</u>	<u>Total %</u>
<30	3	0.7	17	4.1	20	4.8
30-39	2	0.5	85	20.7	87	21.2
40-49	14	3.4	104	25.3	118	28.7
50-59	13	3.2	79	19.2	92	22.4
≥60	69	16.8	25	6.1	94	22.9
	101	24.6%	310	75.4%	411	100%

# **IOWA PHARMACISTS**

## **Retirement Summary**

### **2014**

**Retirements = 62**

**Mean Age = 66**

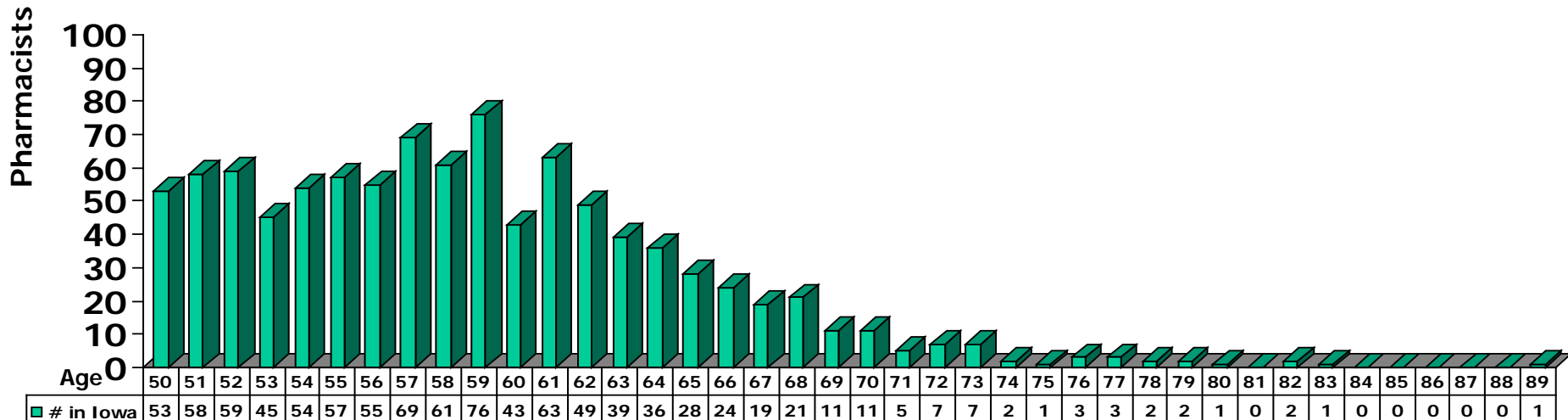
**Median Age = 66**

**Note: Average Retirements over last 5 years = 51**

# IOWA PHARMACISTS

## Detail of Age $\geq 50$

### 2014



**Total number of pharmacists 50 years of age and older = 968 (33%)**

# IOWA PHARMACISTS

## Principal Activity

### 2014

<u>Activity</u>	<u># of Pharmacists</u>	<u>Percent</u>
Community*	1697	58.6%
Hospital	723	25.0
State/Federal Government**	150	5.2
Consultant (Long Term Care)	91	3.1
Academic**	72	2.5
Administrative/Management	68	2.4
Home Infusion Therapy	27	0.9
Public/Community Health	13	0.5
Nuclear	12	0.4
Pharmaceutical Industry	12	0.4
Veterinary	6	0.2
Student Health	5	0.2
Other (Service Ctr-Web, Dental, Research)	<u>18</u>	<u>0.6</u>
<b>Total</b>	<b>2894</b>	<b>100.0%</b>

\* Community Includes: Chain, Independent, Franchise, Hospital-Sponsored, Company-Sponsored, and Relief

\*\* Includes non-Iowa-licensed pharmacists

# IOWA COMMUNITY PHARMACISTS

## By Activity

### 2014

<u>Activity</u>	<u># of Pharmacists</u>	<u>Percent</u>	<u># of Worksites</u>
<b>Chain</b>	1136	66.9%	396
<b>Independent</b>	351	20.7	165
Franchise	119	7.0	62
Hospital-Sponsored	69	4.1	33
Company-Sponsored	14	0.8	5
Relief	6	0.3	6
Other	<u>2</u>	<u>0.2</u>	<u>2</u>
<b>Total</b>	<b>1697</b>	<b>100.0%</b>	<b>669</b>

# IOWA PHARMACISTS

## Iowa Birth and UI Education

	1996		2014	
	<u>Total</u>	<u>Percent</u>	<u>Total</u>	<u>Percent</u>
<b>All Iowa Pharmacists</b>	<b>2344</b>	<b>100.0%</b>	<b>2894</b>	<b>100.0%</b>
<b>Iowa Birthstate</b>	<b>1592</b>	<b>67.9%</b>	<b>1926</b>	<b>66.6%</b>
<b>UI Pharmacy Graduate</b>	<b>1046</b>	<b>44.6%</b>	<b>1348</b>	<b>46.6%</b>
<b>IA Birth and UI Graduate</b>	<b>856</b>	<b>36.5%</b>	<b>1116</b>	<b>38.6%</b>



# IOWA PHARMACISTS with UI Education or Graduate Training 2014

		<u>% of Total</u>	<u>Cumulative %</u>	<u>Number</u>	<u>% of Total</u>
<b>•Pharmacists w/ UI Educational Experience</b>				<b>1395</b>	<b>48.20%</b>
—Pharmacy School (only)	1249	43.16%	43.16%		
—Pharmacy School/Residency	99	3.42%	46.58%		
—Residency (only)	<u>47</u>	<u>1.62%</u>	<u>48.20%</u>		
	<b>Subtotals</b>	<b>1395</b>	<b>48.20%</b>		
<b>•No UI Educational Experience</b>				<b>1499</b>	<b><u>51.80%</u></b>
			<b>Totals</b>	<b>2894</b>	<b>100.00%</b>

# IOWA PHARMACISTS

## Iowa Birth and Drake Education

	1996		2014	
	<u>Total</u>	<u>Percent</u>	<u>Total</u>	<u>Percent</u>
<b>All Iowa Pharmacists</b>	<b>2344</b>	<b>100.0%</b>	<b>2894</b>	<b>100.0%</b>
<b>Iowa Birthstate</b>	<b>1592</b>	<b>67.9%</b>	<b>1926</b>	<b>66.6%</b>
<b>Drake Pharmacy Graduate</b>	<b>639</b>	<b>27.3%</b>	<b>810</b>	<b>28.0%</b>
<b>IA Birth and Drake Graduate</b>	<b>472</b>	<b>20.1%</b>	<b>553</b>	<b>19.1%</b>

# IOWA PHARMACISTS with Drake Education or Graduate Training 2014

		<u>% of Total</u>	<u>Cumulative %</u>	<u>Number</u>	<u>% of Total</u>
<b>•Pharmacists w/ Drake Ed. Exp.</b>					
—Pharmacy School (only)	795	27.47%	27.47%	821	28.36%
—Pharmacy School/Residency	15	0.52%	27.99%		
—Residency (only)	<u>11</u>	<u>0.38%</u>	<u>28.37%</u>		
<b>Subtotals</b>	<b>821</b>	<b>28.37%</b>			
<b>•No Drake Ed. Exp.</b>					
				<u>2073</u>	<u>71.63%</u>
			<b>Totals</b>	<b>2894</b>	<b>100.00%</b>

# DISTRIBUTION OF PHARMACISTS By City Population Ranges 2014

<u>Population</u>	<u>Cities in Iowa</u>	<u># of Cities with Pharmacists</u>	<u># of Pharmacists</u>	<u>Percent</u>	<u>Cumulative Percent</u>
< 1,000	203	16	21	.7%	.7%
1,000- 4,999	664	133	392	13.5%	14.2%
5,000-14,999	54	54	564	19.5%	33.7%
15,000-49,999	16	16	463	16.0%	49.7%
50,000-99,999	8	8	879	30.4%	80.1%
≥ 100,000	2	2	575	19.9%	100%
Totals	947	229	2894	100%	

**66% of Iowa's Pharmacists are in the 26 cities with > 15,000 residents.**

Population Source: US Census City Population Estimates 2010

Source: Iowa Health Professions Tracking Center, Office of Statewide Clinical Education Programs  
UI Carver College of Medicine, June 2015

# IOWA COMMUNITY PHARMACISTS

## Distribution by Community Size

### 2014

<u>Community Population</u>	<u>Number of RPh</u>	<u>Percent</u>	<u>Cumulative Percent</u>
< 1,000	15	0.9%	0.9%
1,000 – 4,999	310	18.3	19.2
5,000 – 9,999	304	17.9	37.1
10,000 – 49,999	454	26.7	63.8
50,000 – 99,999	377	22.2	86.0
≥ 100,000	<u>237</u>	<u>14.0</u>	100.0%
<b>Total</b>	<b>1697</b>	<b>100.0%</b>	

# IOWA INDEPENDENT PHARMACISTS

## Distribution by Community Size

### 2014

<u>Community Population</u>	<u># of RPh</u>	<u>Percent</u>	<u>Cumulative Percent</u>
< 1,000	12	3.4%	3.4%
1,000 – 4,999	143	40.7	44.1
5,000 – 14,999	108	30.8	<b>74.9</b>
15,000 – 49,999	29	8.3	83.2
50,000 – 99,999	39	11.1	94.3
≥ 100,000	<u>20</u>	<u>5.7</u>	100.0%
<b>Total</b>	<b>351</b>	<b>100.0%</b>	

**75% of independent pharmacists work in communities of <15,000**

# IOWA HOSPITAL PHARMACISTS

## Distribution by Community Size

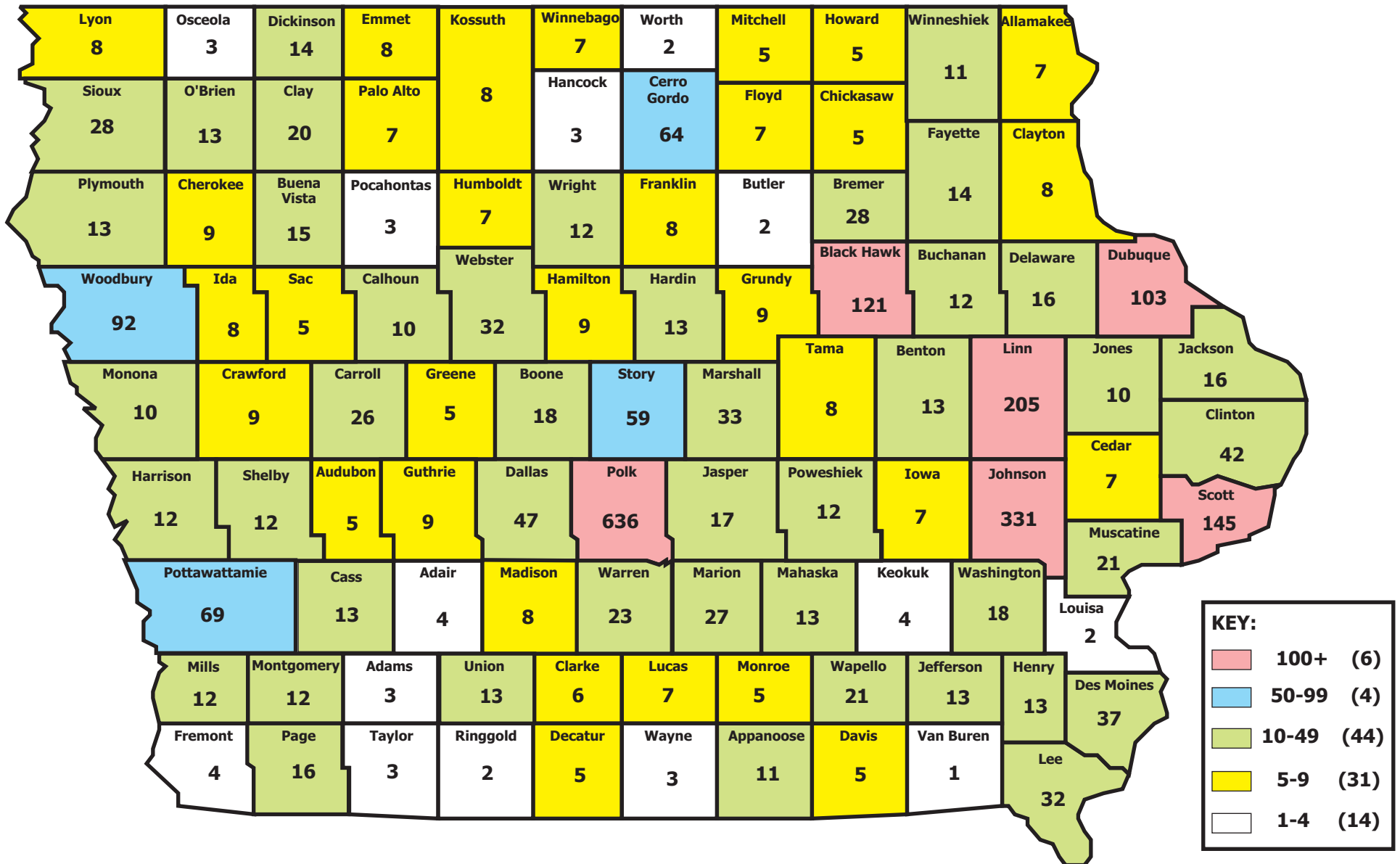
### 2014

<u>Community Population</u>	<u># of RPh</u>	<u>Percent</u>	<u>Cumulative Percent</u>
< 1,000	0	0.0%	0.0%
1,000 – 4,999	54	7.5	7.5
5,000 – 14,999	96	13.3	20.8
15,000 – 49,999	52	7.2	28.0
50,000 – 99,999	314	43.4	71.4
≥ 100,000	<u>207</u>	<u>28.6</u>	100.0%
<b>Total</b>	<b>723</b>	<b>100.0%</b>	

**Note: Does not include VA pharmacists**

# IOWA PHARMACISTS

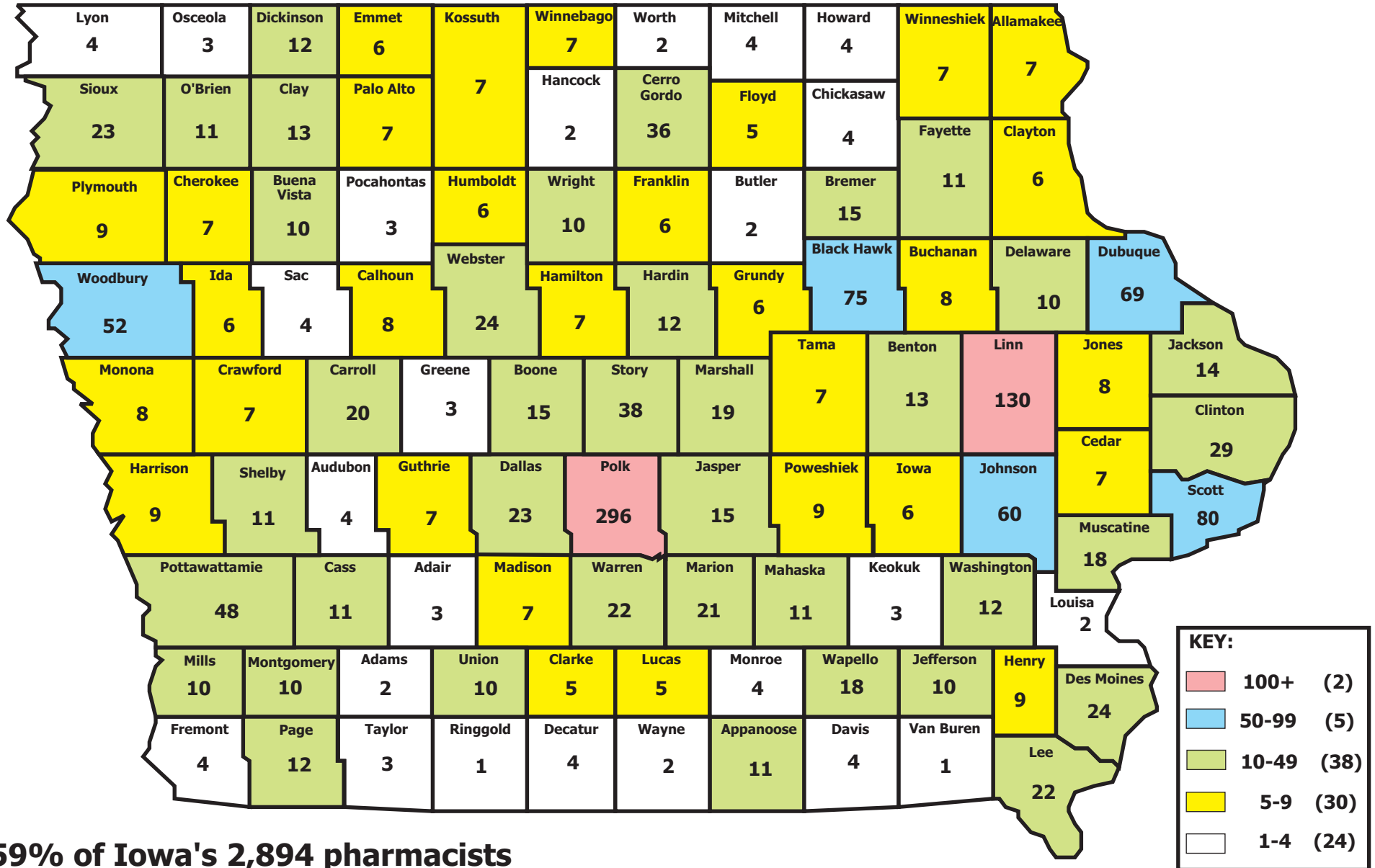
## All Activities (2,894)





# IOWA PHARMACISTS

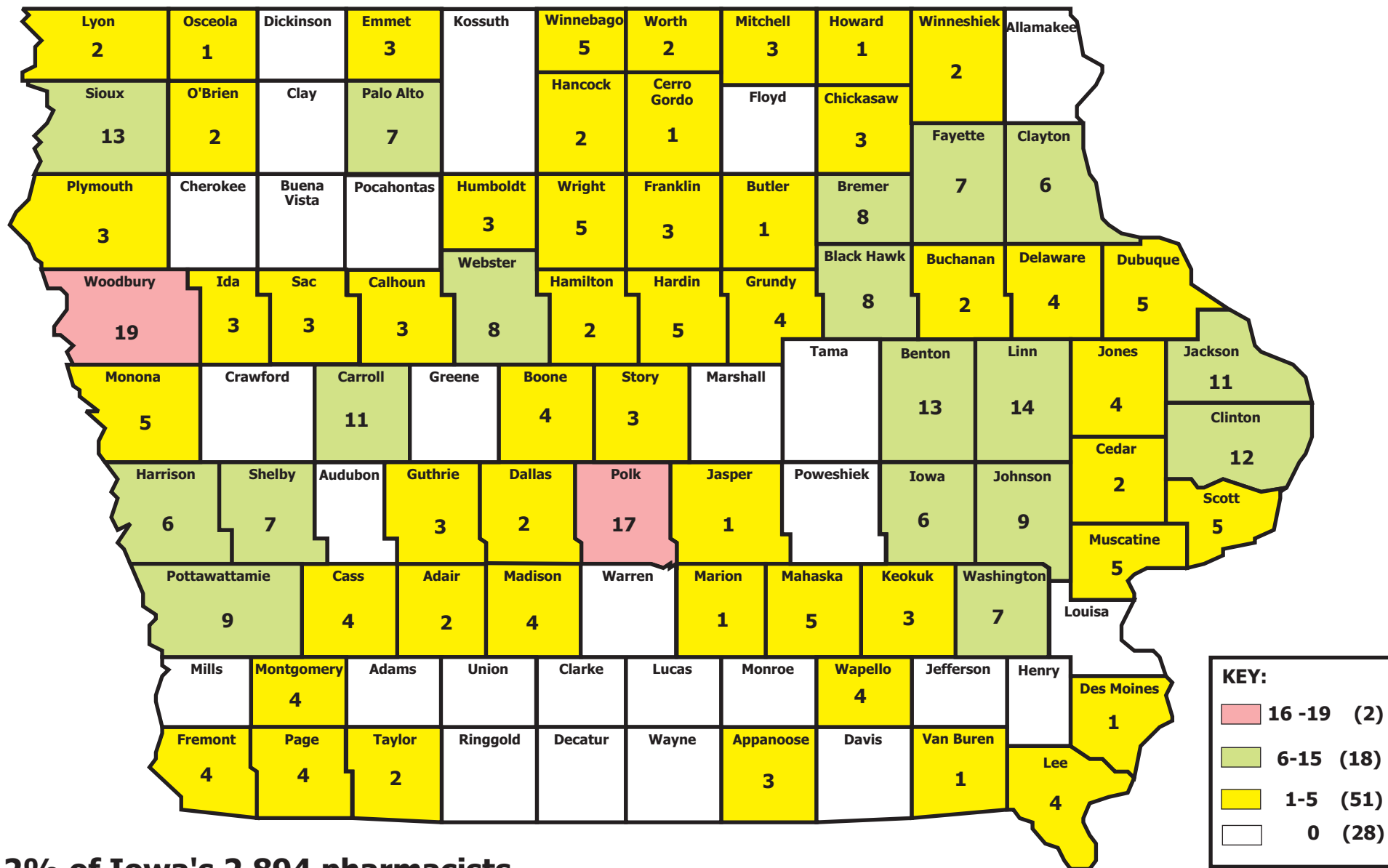
## Community Pharmacists (1,697\*)



\*59% of Iowa's 2,894 pharmacists

# IOWA PHARMACISTS

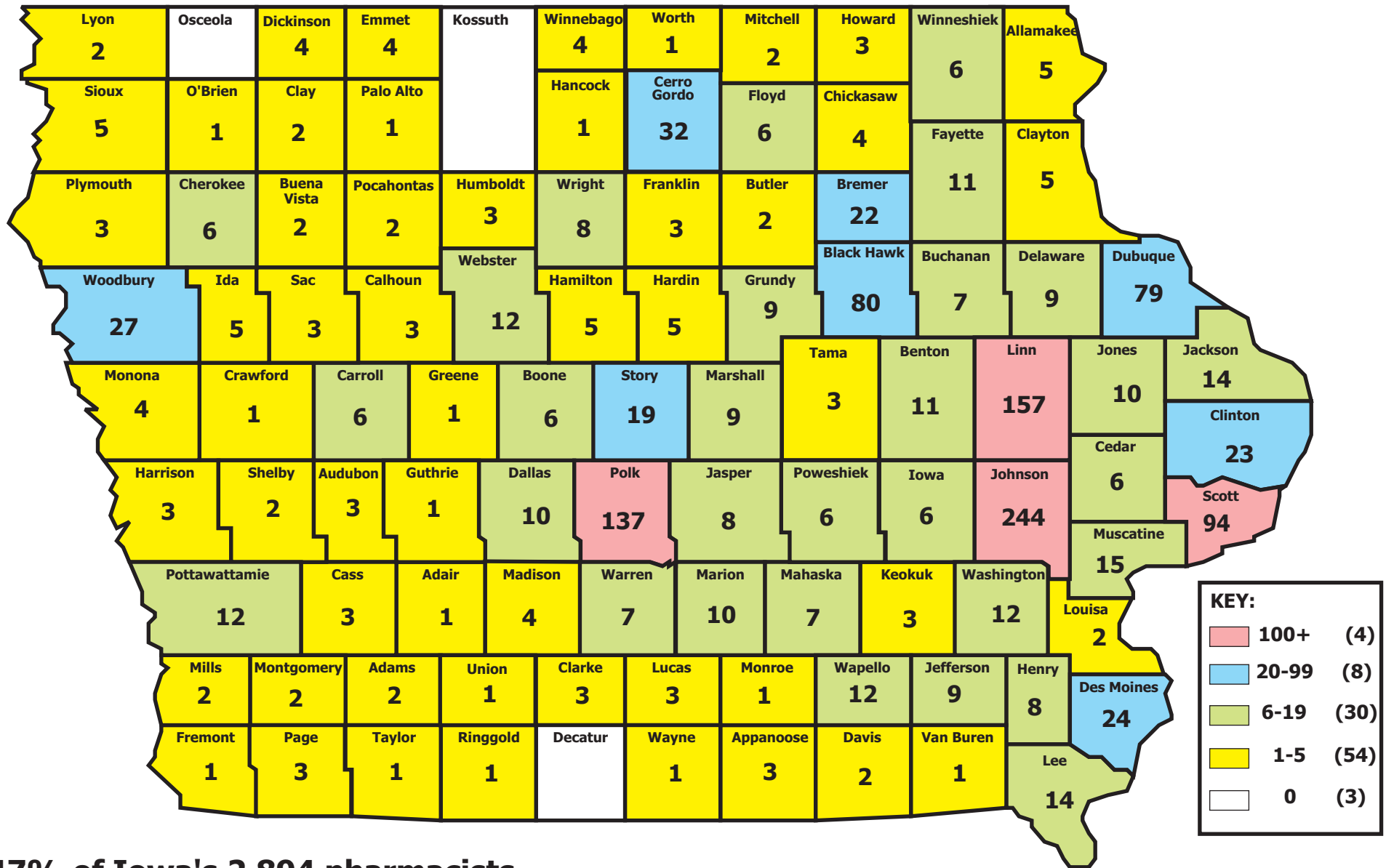
## Independent Pharmacists (351\*)



**\*12% of Iowa's 2,894 pharmacists**

# UI PHARMACY GRADUATES (1,348\*)

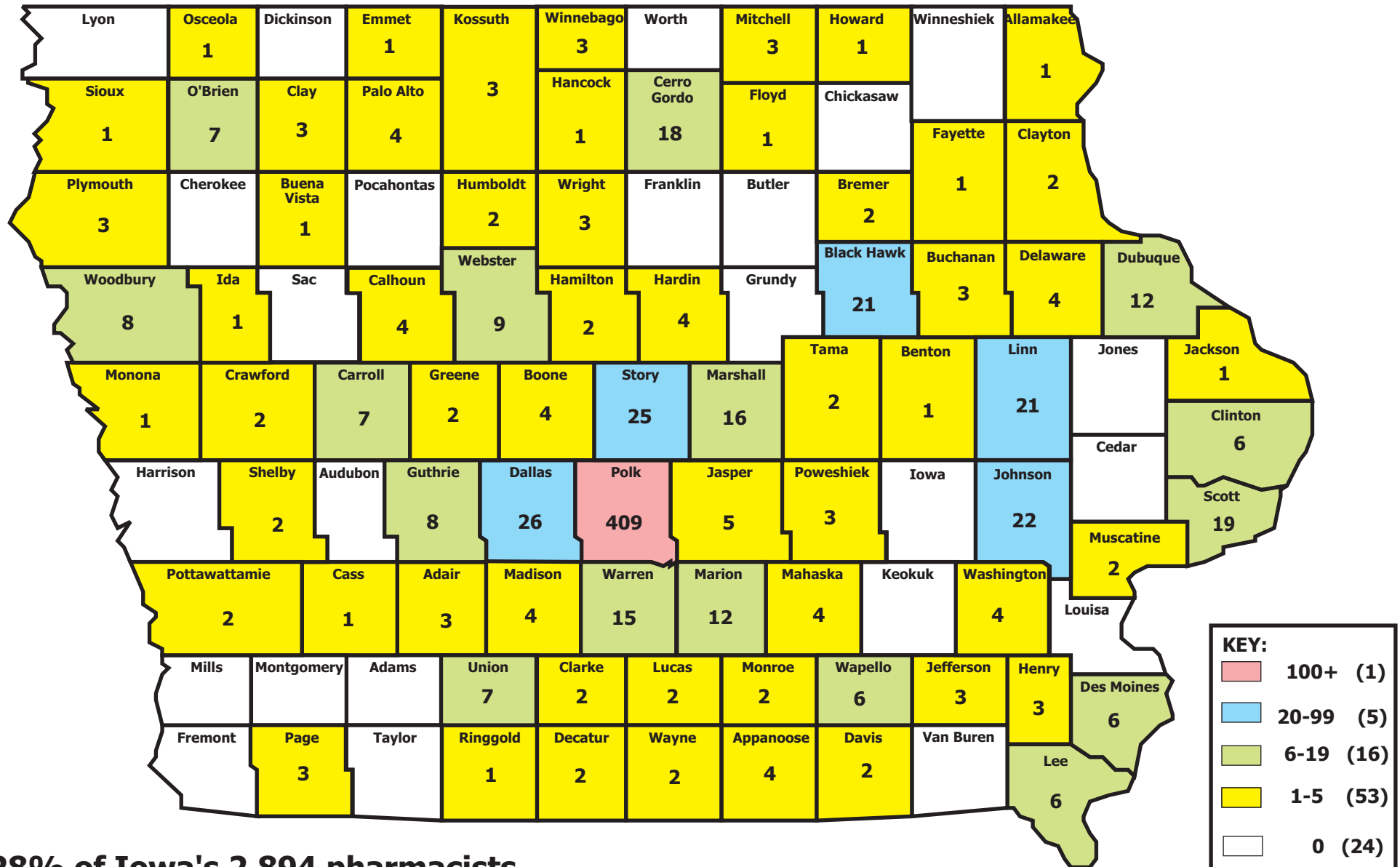
## All Professional Activities



**\*47% of Iowa's 2,894 pharmacists**

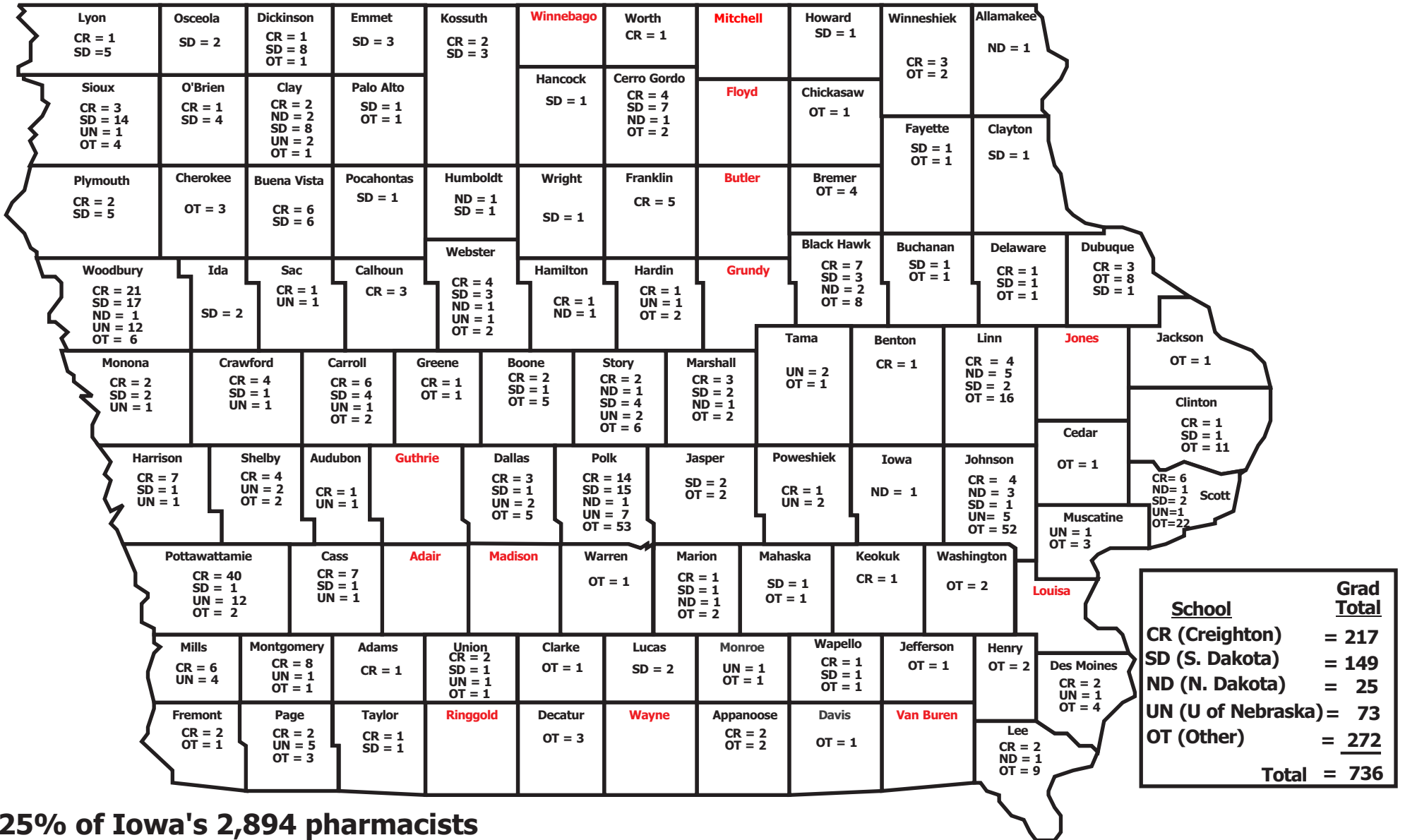
# DRAKE PHARMACY GRADUATES (810\*)

## All Professional Activities



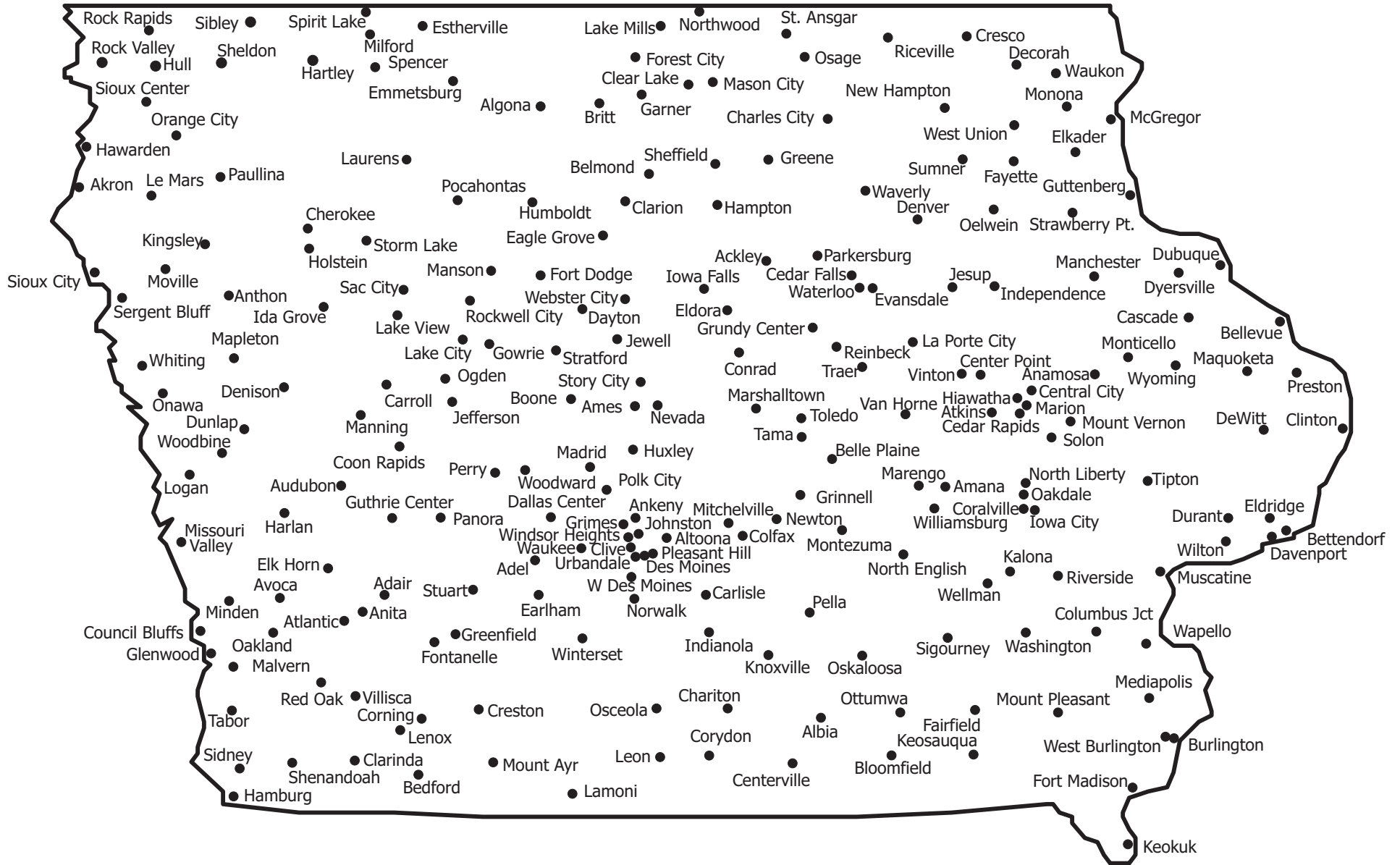
**\*28% of Iowa's 2,894 pharmacists**

# DISTRIBUTION OF PHARMACY GRADUATES FROM COLLEGES OTHER THAN UI AND DRAKE

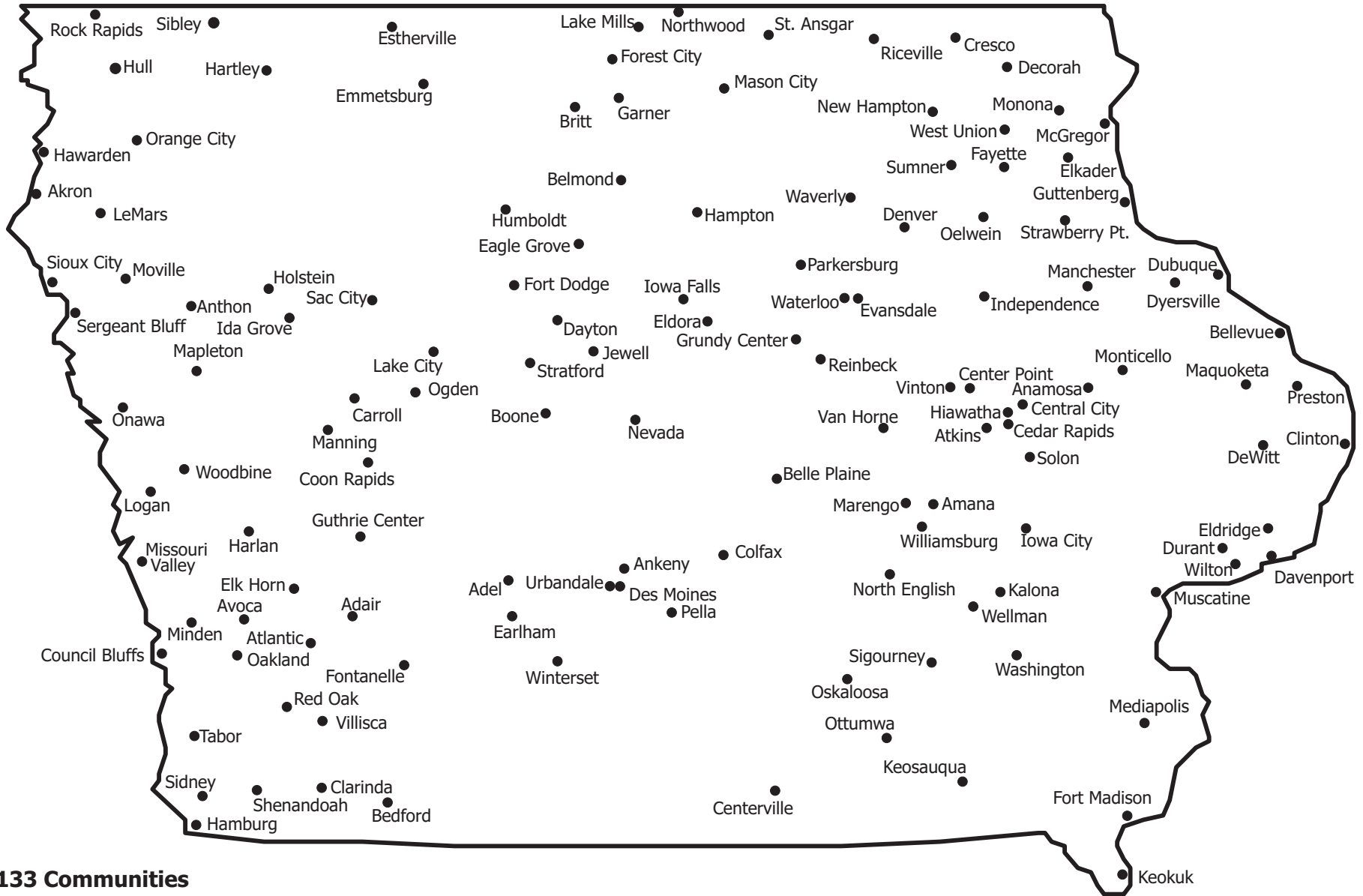


25% of Iowa's 2,894 pharmacists

# COMMUNITIES WITH PHARMACISTS (229)



# IOWA COMMUNITIES\* WITH INDEPENDENT PHARMACISTS

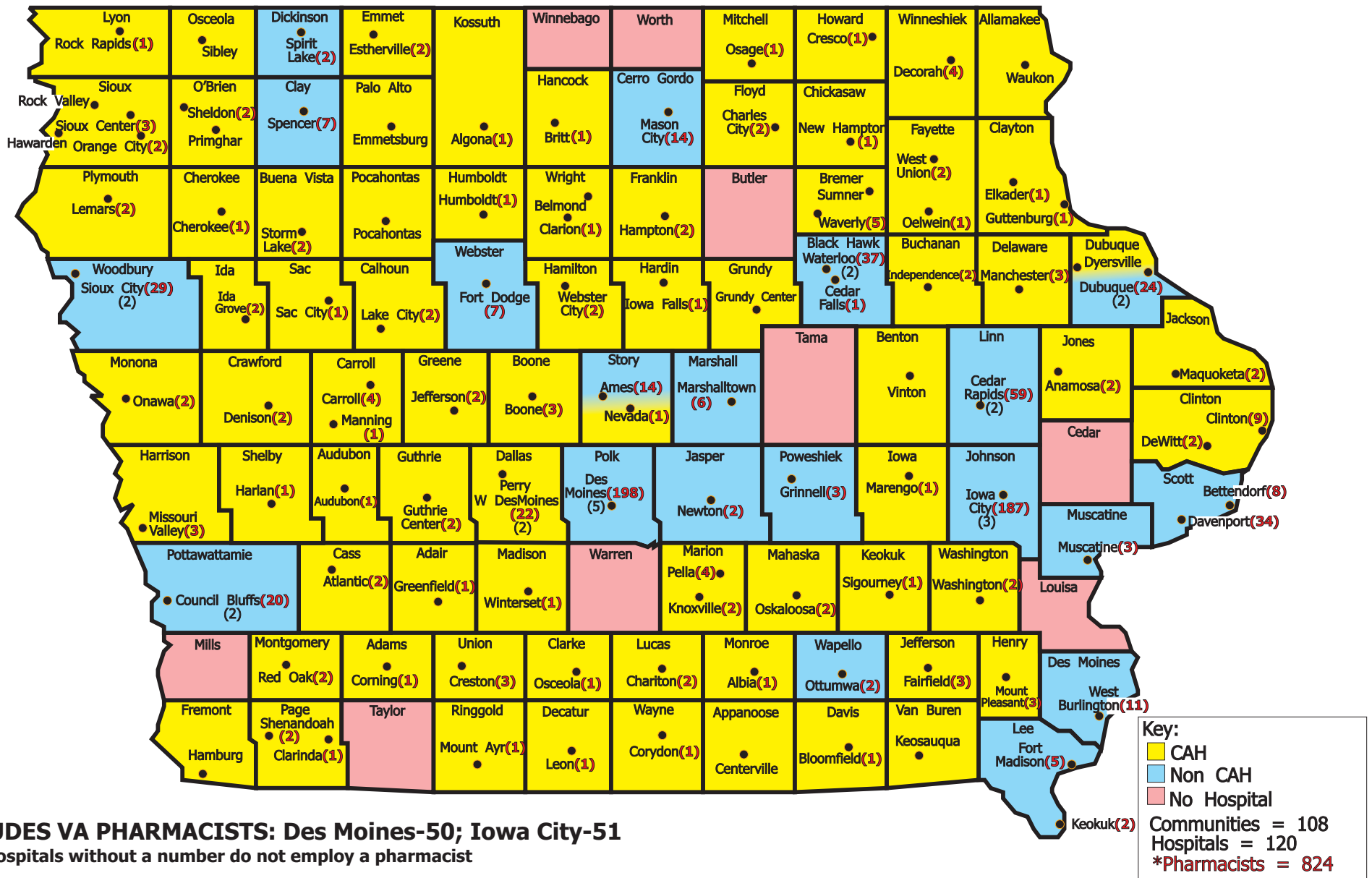


\* 133 Communities

# IOWA CITIES WITH HOSPITALS

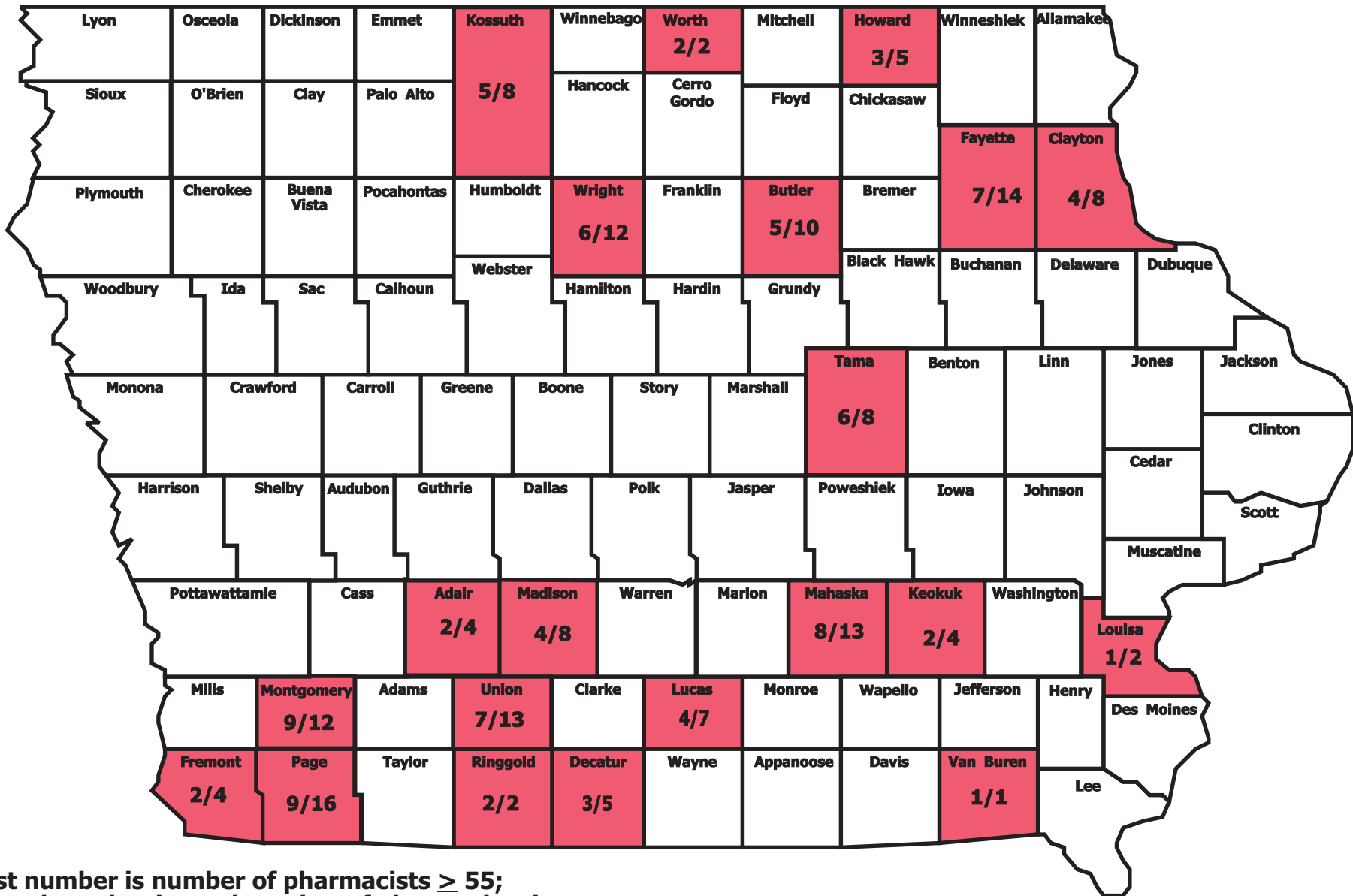
## Hospital **Pharmacists\*** per Community

### 2014





# IOWA COUNTIES WITH 50% OF PHARMACISTS $\geq$ AGE 55 All Professional Activities



First number is number of pharmacists  $\geq$  55;  
second number is total number of pharmacists in county.

**IOWA POPULATION TO PHARMACIST RATIO BY COUNTY**  
**1997 - 2005 - 2014**

Area	1997			2005			2014			Change in Population/ Pharmacist Ratio
	Population	Pharmacists	Ratio	Population	Pharmacists	Ratio	Population	Pharmacists	Ratio	
<b>State of Iowa</b>	<b>2,854,437</b>	<b>2,363</b>	<b>1,208</b>	<b>2,966,334</b>	<b>2,590</b>	<b>1,145</b>	<b>3,047,646</b>	<b>2,894</b>	<b>1,053</b>	<b>-155</b>
Benton	24,986	6	4,164	27,000	8	3375	25,680	13	1,975	-2189
Sac	11,916	3	3,972	10,621	6	1770	10,035	5	2,007	-1965
Wayne	6,775	2	3,388	6,601	2	3301	6,395	3	2,132	-1256
Audubon	6,829	3	2,276	6,457	4	1614	5,794	5	1,159	-1118
Dallas	35,783	13	2,753	51,762	16	3235	77,400	47	1,647	-1106
Davis	8,460	3	2,820	8,659	3	2886	8,781	5	1,756	-1064
Bremer	23,302	12	1,942	23,677	16	1480	24,721	28	883	-1059
Delaware	18,444	9	2,049	18,025	11	1639	17,398	16	1,087	-962
Lyon	11,968	5	2,394	11,750	4	2938	11,683	8	1,460	-933
Adams	4,407	2	2,204	4,264	3	1421	3,875	3	1,292	-912
Tama	17,681	6	2,947	17,919	6	2987	17,451	8	2,181	-765
Ida	8,016	5	1,603	7,379	4	1845	7,042	8	880	-723
Guthrie	11,474	6	1,912	11,547	6	1925	10,722	9	1,191	-721
Buena Vista	19,637	10	1,964	20,151	9	2239	20,578	15	1,372	-592
Lucas	9,110	5	1,822	9,672	6	1612	8,701	7	1,243	-579
Pocahontas	8,833	3	2,944	7,930	4	1983	7,138	3	2,379	-565
Jefferson	17,063	9	1,896	15,972	10	1597	17,325	13	1,333	-563
Mills	14,342	8	1,793	15,284	9	1698	14,831	12	1,236	-557
Poweshiek	18,934	9	2,104	18,925	13	1456	18,668	12	1,556	-548
Des Moines	42,096	26	1,619	40,810	37	1103	40,255	37	1,088	-531
Clarke	8,229	4	2,057	9,161	4	2290	9,217	6	1,536	-521
Hardin	18,492	10	1,849	18,003	10	1800	17,311	13	1,332	-518
Washington	20,886	12	1,741	21,457	16	1341	22,070	18	1,226	-514
Lee	38,665	24	1,611	36,705	30	1224	35,286	32	1,103	-508
Harrison	15,288	9	1,699	15,884	11	1444	14,324	12	1,194	-505
Wright	14,135	9	1,571	13,647	9	1516	12,840	12	1,070	-501
Jones	20,353	8	2,544	20,509	12	1709	20,454	10	2,045	-499
Clayton	18,792	7	2,685	18,337	9	2037	17,692	8	2,212	-473
Shelby	13,073	9	1,453	12,634	13	972	11,948	12	996	-457
Crawford	16,467	7	2,352	16,889	8	2111	17,228	9	1,914	-438
Clay	17,594	14	1,257	16,897	16	1056	16,515	20	826	-431
Union	12,499	9	1,389	11,972	10	1197	12,516	13	963	-426
Monroe	8,082	4	2,021	7,835	6	1306	8,001	5	1,600	-420
Warren	39,784	16	2,487	42,981	19	2262	47,956	23	2,085	-401
Palo Alto	10,081	6	1,680	9,697	9	1077	9,099	7	1,300	-380
Plymouth	24,692	11	2,245	24,958	10	2496	24,874	13	1,913	-331

	1997 - 2014 Population per pharmacist ratio improved (57)
	1997 - 2014 Population per pharmacist ratio stable (19)
	1997 - 2014 Population per pharmacist ratio worsened (23)

Area	1997			2005			2014			Change in Population/ Pharmacist Ratio
	Population	Pharmacists	Ratio	Population	Pharmacists	Ratio	Population	Pharmacists	Ratio	
<b>State of Iowa</b>	<b>2,854,437</b>	<b>2,363</b>	<b>1,208</b>	<b>2,966,334</b>	<b>2,590</b>	<b>1,145</b>	<b>3,047,646</b>	<b>2,894</b>	<b>1,053</b>	<b>-155</b>
Hancock	12,010	3	4,003	11,786	3	3929	11,027	3	3,676	-328
Taylor	7,121	3	2,374	6,614	3	2205	6,143	3	2,048	-326
Montgomery	11,849	10	1,185	11,313	12	943	10,421	12	868	-316
Keokuk	11,496	4	2,874	11,157	5	2231	10,231	4	2,558	-316
Carroll	21,624	20	1,081	21,034	18	1169	20,562	26	791	-290
Clinton	50,100	35	1,431	49,717	34	1462	48,051	42	1,144	-287
Osceola	7,052	3	2,351	6,694	3	2231	6,218	3	2,073	-278
Boone	26,179	15	1,745	26,602	18	1478	26,433	18	1,469	-277
Franklin	10,909	7	1,558	10,732	7	1533	10,436	8	1,305	-254
Dickinson	16,048	11	1,459	16,687	14	1192	16,935	14	1,210	-249
Woodbury	101,862	75	1,358	102,605	86	1193	102,271	92	1,112	-247
Chickasaw	13,427	5	2,685	12,563	6	2094	12,264	5	2,453	-233
Cerro Gordo	46,314	51	908	44,645	53	842	43,254	64	676	-232
Fayette	21,909	13	1,685	21,298	9	2366	20,343	14	1,453	-232
Jackson	20,080	14	1,434	20,335	13	1564	19,482	16	1,218	-217
Appanoose	13,509	10	1,351	13,666	10	1367	12,661	11	1,151	-200
Sioux	31,292	22	1,422	32,277	25	1291	34,681	28	1,239	-184
Black Hawk	121,350	95	1,277	125,891	103	1222	132,897	121	1,098	-179
Webster	38,690	30	1,290	39,003	28	1393	36,955	32	1,155	-135
Dubuque	88,186	84	1,050	91,631	93	985	96,370	103	936	-114
Monona	10,138	10	1,014	9,520	11	865	8,996	10	900	-114
Cass	14,745	13	1,134	14,219	17	836	13,448	13	1,034	-100
Mahaska	21,812	12	1,818	22,364	16	1398	22,370	13	1,721	-97
Linn	181,542	157	1,156	198,903	202	985	217,751	205	1,062	-94
Worth	7,772	2	3,886	7,768	2	3884	7,624	2	3,812	-74
Howard	9,694	5	1,939	9,700	5	1940	9,449	5	1,890	-49
Buchanan	21,162	12	1,764	21,019	8	2627	21,038	12	1,753	-10
Johnson	101,921	232	439	117,067	252	465	142,287	331	430	-9
Polk	356,245	487	732	401,006	555	723	459,862	636	723	-8
Winneshiek	20,827	11	1,893	21,234	9	2359	20,768	11	1,888	-5
Winnebago	12,056	8	1,507	11,351	6	1892	10,559	7	1,508	1
Allamakee	14,006	7	2,001	14,709	4	3677	14,038	7	2,005	5
Grundy	12,297	9	1,366	12,329	11	1121	12,375	9	1,375	9
Scott	157,746	136	1,160	160,998	152	1059	171,387	145	1,182	22
Calhoun	11,488	12	957	10,443	10	1044	9,866	10	987	29
Story	74,922	48	1,561	79,952	51	1568	94,073	59	1,594	34
Page	17,326	19	912	16,253	16	1016	15,496	16	969	57
Cedar	17,990	7	2,570	18,254	6	3042	18,411	7	2,630	60

	1997 - 2014 Population per pharmacist ratio improved (57)
	1997 - 2014 Population per pharmacist ratio stable (19)
	1997 - 2014 Population per pharmacist ratio worsened (23)

Area	1997			2005			2014			Change in Population/ Pharmacist Ratio
	Population	Pharmacists	Ratio	Population	Pharmacists	Ratio	Population	Pharmacists	Ratio	
<b>State of Iowa</b>	<b>2,854,437</b>	<b>2,363</b>	<b>1,208</b>	<b>2,966,334</b>	<b>2,590</b>	<b>1,145</b>	<b>3,047,646</b>	<b>2,894</b>	<b>1,053</b>	<b>-155</b>
Jasper	35,781	17	2,105	37,674	16	2355	36,872	17	2,169	64
Marshall	38,776	34	1,140	39,418	28	1408	40,866	33	1,238	98
Pottawattamie	85,319	69	1,237	89,738	70	1282	93,128	69	1,350	113
O'Brien	14,982	16	936	14,414	9	1602	14,056	13	1,081	145
Emmet	10,959	10	1,096	10,534	9	1170	9,990	8	1,249	153
Greene	10,083	6	1,681	9,963	5	1993	9,200	5	1,840	160
Marion	31,114	29	1,073	32,984	26	1269	33,365	27	1,236	163
Wapello	35,483	24	1,478	35,965	32	1124	35,212	21	1,677	198
Hamilton	16,040	11	1,458	16,209	13	1247	15,117	9	1,680	221
Humboldt	10,362	9	1,151	9,973	9	1108	9,640	7	1,377	226
Henry	19,824	15	1,322	20,246	16	1265	20,217	13	1,555	234
Madison	13,740	8	1,718	15,158	9	1684	15,609	8	1,951	234
Adair	8,146	5	1,629	7,859	3	2620	7,454	4	1,864	234
Decatur	8,151	6	1,359	8,605	7	1229	8,263	5	1,653	294
Muscatine	40,900	24	1,704	42,756	21	2036	42,903	21	2,043	339
Cherokee	13,363	15	891	12,237	9	1360	11,836	9	1,315	424
Iowa	15,454	9	1,717	16,055	11	1460	16,375	7	2,339	622
Kossuth	17,907	14	1,279	16,142	12	1345	15,222	8	1,903	624
Ringgold	5,366	3	1,789	5,273	2	2637	5,051	2	2,526	737
Mitchell	11,081	8	1,385	10,919	8	1365	10,779	5	2,156	771
Fremont	7,806	8	976	7,759	9	862	7,022	4	1,756	780
Floyd	16,494	11	1,499	16,443	12	1370	16,077	7	2,297	797
Louisa	11,894	3	3,965	11,842	3	3947	11,161	2	5,581	1616
Butler	15,724	5	3,145	15,072	5	3014	15,006	2	7,503	4358
Van Buren	7,824	3	2,608	7,786	1	7786	7,468	1	7,468	4860

Population Estimates Data Sets Revised - **1997** in 2001; **2005** in 2009; 2014 in 2014

1997 - 2014 Population per pharmacist ratio improved (66)										
1997 - 2014 Population per pharmacist ratio stable (10)										
1997 - 2014 Population per pharmacist ratio worsened (23)										
Area	1997			2005			2014			Change in Population/ Pharmacist Ratio
	Population	Pharmacists	Ratio	Population	Pharmacists	Ratio	Population	Pharmacists	Ratio	
State of Iowa	2,854,437	2,363	1,208	2,966,334	2,590	1,145	3,047,646	2,894	1,053	-155
Benton	24,986	6	4,164	27,000	8	3375	25,680	13	1,975	-2189
Sac	11,916	3	3,972	10,621	6	1770	10,035	5	2,007	-1965
Wayne	6,775	2	3,388	6,601	2	3301	6,395	3	2,132	-1256
Audubon	6,829	3	2,276	6,457	4	1614	5,794	5	1,159	-1118
Dallas	35,783	13	2,753	51,762	16	3235	77,400	47	1,647	-1106
Davis	8,460	3	2,820	8,659	3	2886	8,781	5	1,756	-1064
Bremer	23,302	12	1,942	23,677	16	1480	24,721	28	883	-1059
Delaware	18,444	9	2,049	18,025	11	1639	17,398	16	1,087	-962
Lyon	11,968	5	2,394	11,750	4	2938	11,683	8	1,460	-933
Adams	4,407	2	2,204	4,264	3	1421	3,875	3	1,292	-912
Tama	17,681	6	2,947	17,919	6	2987	17,451	8	2,181	-765
Ia	8,016	5	1,603	7,379	4	1845	7,042	8	880	-723
Guthrie	11,474	6	1,912	11,547	6	1925	10,722	9	1,191	-721
Buena Vista	19,637	10	1,964	20,151	9	2239	20,578	15	1,372	-592
Lucas	9,110	5	1,822	9,672	6	1612	8,701	7	1,243	-579
Pocahontas	8,833	3	2,944	7,930	4	1983	7,138	3	2,379	-565
Jefferson	17,063	9	1,896	15,972	10	1597	17,325	13	1,333	-563
Mills	14,342	8	1,793	15,284	9	1698	14,831	12	1,236	-557
Poweshiek	18,934	9	2,104	18,925	13	1456	18,668	12	1,556	-548
Des Moines	42,096	26	1,619	40,810	37	1103	40,255	37	1,088	-531
Clarke	8,229	4	2,057	9,161	4	2290	9,217	6	1,536	-521
Hardin	18,492	10	1,849	18,003	10	1800	17,311	13	1,332	-518
Washington	20,886	12	1,741	21,457	16	1341	22,070	18	1,226	-514
Lee	38,665	24	1,611	36,705	30	1224	35,286	32	1,103	-508
Harrison	15,288	9	1,699	15,884	11	1444	14,324	12	1,194	-505
Wright	14,135	9	1,571	13,647	9	1516	12,840	12	1,070	-501
Jones	20,353	8	2,544	20,509	12	1709	20,454	10	2,045	-499
Clayton	18,792	7	2,685	18,337	9	2037	17,692	8	2,212	-473
Shelby	13,073	9	1,453	12,634	13	972	11,948	12	996	-457
Crawford	16,467	7	2,352	16,889	8	2111	17,228	9	1,914	-438
Clay	17,594	14	1,257	16,897	16	1056	16,515	20	826	-431
Union	12,499	9	1,389	11,972	10	1197	12,516	13	963	-426
Monroe	8,082	4	2,021	7,835	6	1306	8,001	5	1,600	-420
Warren	39,784	16	2,487	42,981	19	2262	47,956	23	2,085	-401
Palo Alto	10,081	6	1,680	9,697	9	1077	9,099	7	1,300	-380
Plymouth	24,692	11	2,245	24,958	10	2496	24,874	13	1,913	-331
Hancock	12,010	3	4,003	11,786	3	3929	11,027	3	3,676	-328
Taylor	7,121	3	2,374	6,614	3	2205	6,143	3	2,048	-326
Montgomery	11,849	10	1,185	11,313	12	943	10,421	12	868	-316
Keokuk	11,496	4	2,874	11,157	5	2231	10,231	4	2,558	-316
Carroll	21,624	20	1,081	21,034	18	1169	20,562	26	791	-290
Clinton	50,100	35	1,431	49,717	34	1462	48,051	42	1,144	-287
Osceola	7,052	3	2,351	6,694	3	2231	6,218	3	2,073	-278
Boone	26,179	15	1,745	26,602	18	1478	26,433	18	1,469	-277
Franklin	10,909	7	1,558	10,732	7	1533	10,436	8	1,305	-254
Dickinson	16,048	11	1,459	16,687	14	1192	16,935	14	1,210	-249
Woodbury	101,862	75	1,358	102,605	86	1193	102,271	92	1,112	-247
Chickasaw	13,427	5	2,685	12,563	6	2094	12,264	5	2,453	-233
Cerro Gordo	46,314	51	908	44,645	53	842	43,254	64	676	-232
Fayette	21,909	13	1,685	21,298	9	2366	20,343	14	1,453	-232
Jackson	20,080	14	1,434	20,335	13	1564	19,482	16	1,218	-217
Appanoose	13,509	10	1,351	13,666	10	1367	12,661	11	1,151	-200
Sioux	31,292	22	1,422	32,277	25	1291	34,681	28	1,239	-184
Black Hawk	121,350	95	1,277	125,891	103	1222	132,897	121	1,098	-179
Webster	38,690	30	1,290	39,003	28	1393	36,955	32	1,155	-135
Dubuque	88,186	84	1,050	91,631	93	985	96,370	103	936	-114
Monona	10,138	10	1,014	9,520	11	865	8,996	10	900	-114
Cass	14,745	13	1,134	14,219	17	836	13,448	13	1,034	-100
Mahaska	21,812	12	1,818	22,364	16	1398	22,370	13	1,721	-97
Linn	181,542	157	1,156	198,903	202	985	217,751	205	1,062	-94
Worth	7,772	2	3,886	7,768	2	3884	7,624	2	3,812	-74
Howard	9,694	5	1,939	9,700	5	1940	9,449	5	1,890	-49
Buchanan	21,162	12	1,764	21,019	8	2627	21,038	12	1,753	-10
Johnson	101,921	232	439	117,067	252	465	142,287	331	430	-9
Polk	356,245	487	732	401,006	555	723	459,862	636	723	-8
Winneshiek	20,827	11	1,893	21,234	9	2359	20,768	11	1,888	-5
Winnebago	12,056	8	1,507	11,351	6	1892	10,559	7	1,508	1
Allamakee	14,006	7	2,001	14,709	4	3677	14,038	7	2,005	5
Grundy	12,297	9	1,366	12,329	11	1121	12,375	9	1,375	9
Scott	157,746	136	1,160	160,998	152	1059	171,387	145	1,182	22
Calhoun	11,488	12	957	10,443	10	1044	9,866	10	987	29
Story	74,922	48	1,561	79,952	51	1568	94,073	59	1,594	34
Page	17,326	19	912	16,253	16	1016	15,496	16	969	57
Cedar	17,990	7	2,570	18,254	6	3042	18,411	7	2,630	60
Jasper	35,781	17	2,105	37,674	16	2355	36,872	17	2,169	64
Marshall	38,776	34	1,140	39,418	28	1408	40,866	33	1,238	98
Pottawattamie	85,319	69	1,237	89,738	70	1282	93,128	69	1,350	113
O'Brien	14,982	16	936	14,414	9	1602	14,056	13	1,081	145
Emmet	10,959	10	1,096	10,534	9	1170	9,990	8	1,249	153
Greene	10,083	6	1,681	9,963	5	1993	9,200	5	1,840	160
Marion	31,114	29	1,073	32,984	26	1269	33,365	27	1,236	163
Wapello	35,483	24	1,478	35,965	32	1124	35,212	21	1,677	198
Hamilton	16,040	11	1,458	16,209	13	1247	15,117	9	1,680	221
Humboldt	10,362	9	1,151	9,973	9	1108	9,640	7	1,377	226
Henry	19,824	15	1,322	20,246	16	1265	20,217	13	1,555	234
Madison	13,740	8	1,718	15,158	9	1684	15,609	8	1,951	234
Adair	8,146	5	1,629	7,859	3	2620	7,454	4	1,864	234
Decatur	8,151	6	1,359	8,605	7	1229	8,263	5	1,653	294
Muscatine	40,900	24	1,704	42,756	21	2036	42,903	21	2,043	339
Cherokee	13,363	15	891	12,237	9	1360	11,836	9	1,315	424
Iowa	15,454	9	1,717	16,055	11	1460	16,375	7	2,339	622
Kossuth	17,907	14	1,279	16,142	12	1345	15,222	8	1,903	624
Ringgold	5,366	3	1,789	5,273	2	2637	5,051	2	2,526	737
Mitchell	11,081	8	1,385	10,919	8	1365	10,779	5	2,156	771
Fremont	7,806	8	976	7,759	9	862	7,022	4	1,756	780
Floyd	16,494	11	1,499	16,443	12	1370	16,077	7	2,297	797
Louisa	11,894	3	3,965	11,842	3	3947	11,161	2	5,581	1616
Butler	15,724	5	3,145	15,072	5	3014	15,006	2	7,503	4358
Van Buren	7,824	3	2,608	7,786	1	7786	7,468	1	7,468	4860

Pharmacist supply for 44% of population and 58% of counties has improved or remained steady

Steady pharmacist supply relative to population (change is <100+/-)

Pharmacist supply for 14% of population and 23% of counties has worsened

## INDEPENDENT PHARMACISTS BY COUNTY

County	1997	2005	2014	CHANGE	%Change
Adair	5	3	2	-3	-60%
Adams	2	2	0	-2	-100%
Allamakee	5	0	0	-5	-100%
Appanoose	3	3	3	0	0%
Audubon	1	0	0	-1	N/A
Benton	6	8	13	7	117%
Black Hawk	20	17	8	-12	-60%
Boone	7	6	4	-3	-43%
Bremer	8	5	8	0	0%
Buchanan	6	2	2	-4	-67%
Buena Vista	5	4	0	-5	-100%
Butler	1	1	1	0	0%
Calhoun	6	5	3	-3	-50%
Carroll	12	7	11	-1	-8%
Cass	4	4	4	0	0%
Cedar	4	2	2	-2	-50%
Cerro Gordo	9	3	1	-8	-89%
Cherokee	3	0	0	-3	N/A
Chickasaw	5	5	3	-2	-40%
Clarke	2	1	0	-2	-100%
Clay	6	3	0	-6	-100%
Clayton	6	7	6	0	0%
Clinton	17	16	11	-6	-35%
Crawford	4	0	0	-4	-100%
Dallas	4	2	2	-2	-50%
Davis	1	1	0	-1	-100%
Decatur	5	6	0	-5	-100%
Delaware	3	4	4	1	33%
Des Moines	5	1	1	-4	-80%
Dickinson	3	1	0	-3	-100%
Dubuque	22	6	5	-17	-77%
Emmet	6	3	3	-3	-50%
Fayette	9	6	7	-2	-22%
Floyd	3	4	0	-3	-100%
Franklin	4	3	3	-1	-25%
Fremont	7	7	4	-3	-43%
Greene	1	0	0	-1	N/A
Grundy	6	5	4	-2	-33%
Guthrie	5	4	3	-2	-40%
Hamilton	7	6	2	-5	-71%
Hancock	3	3	2	-1	-33%
Hardin	6	3	5	-1	-17%
Harrison	6	5	6	0	0%
Henry	6	0	0	-6	-100%
Howard	4	3	1	-3	-75%
Humboldt	5	3	3	-2	-40%
Ida	3	2	3	0	0%
Iowa	9	9	6	-3	-33%
Jackson	9	10	11	2	22%
Jasper	6	1	1	-5	-83%
Jefferson	3	2	0	-3	-100%
Johnson	13	8	9	-4	-31%
Jones	5	5	4	-1	-20%
Keokuk	4	4	3	-1	-25%
Kossuth	9	1	0	-9	-100%

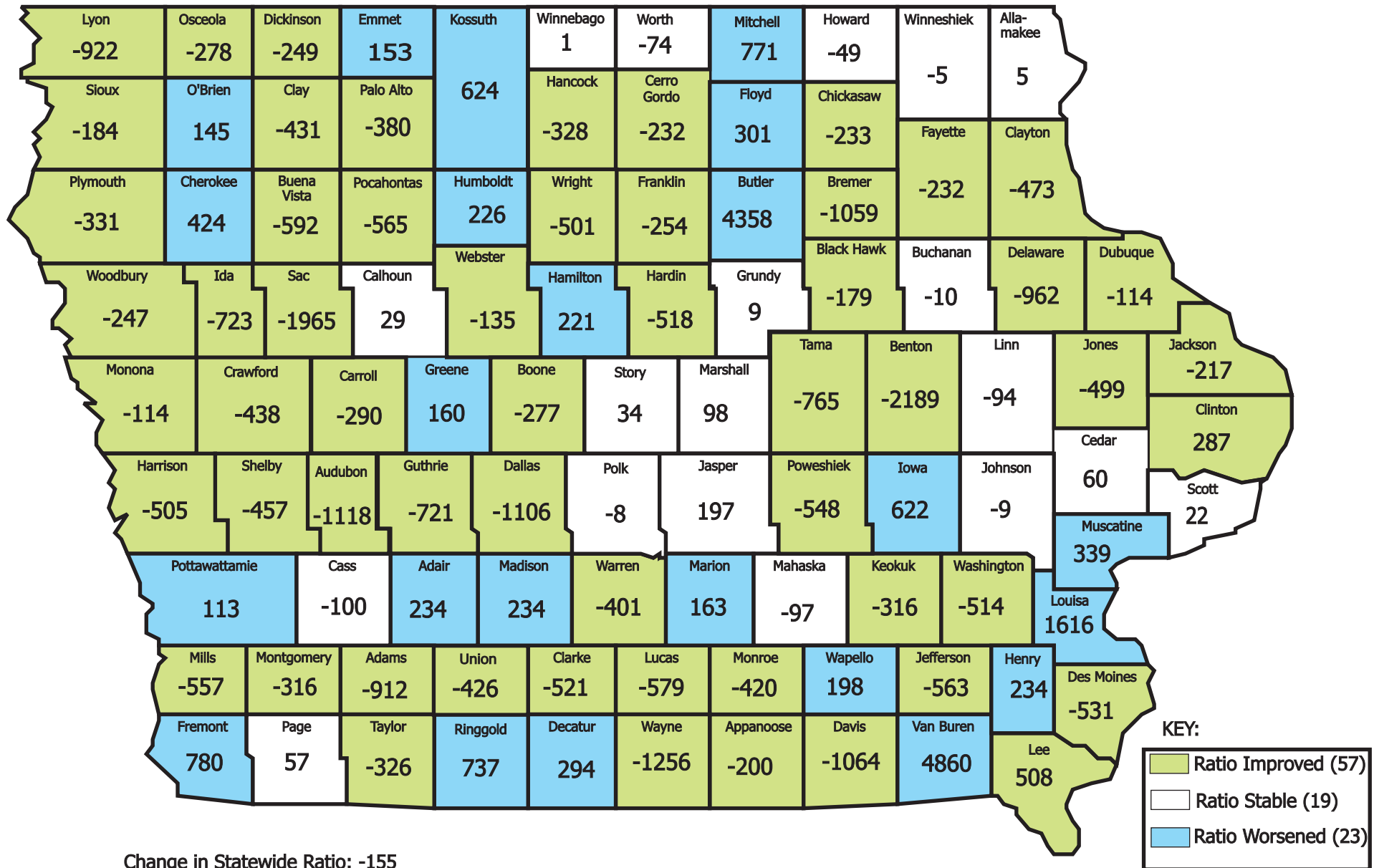
## INDEPENDENT PHARMACISTS BY COUNTY

County	1997	2005	2014	CHANGE	%Change
Lee	12	9	4	-8	-67%
Linn	30	35	14	-16	-53%
Louisa	3	0	0	-3	-100%
Lucas	3	0	0	-3	N/A
Lyon	2	1	2	0	0%
Madison	4	5	4	0	0%
Mahaska	6	4	5	-1	-17%
Marion	10	1	1	-9	-90%
Marshall	3	0	0	-3	N/A
Mills	7	7	0	-7	-100%
Mitchell	7	7	3	-4	-57%
Monona	7	8	5	-2	-29%
Monroe	2	1	0	-2	-100%
Montgomery	8	5	4	-4	-50%
Muscatine	7	7	5	-2	-29%
O'Brien	12	3	2	-10	-83%
Osceola	3	3	1	-2	-67%
Page	6	6	4	-2	-33%
Palo Alto	6	9	7	1	17%
Plymouth	6	2	3	-3	-50%
Pocahontas	3	4	0	-3	-100%
Polk	54	40	17	-37	-69%
Pottawattamie	18	10	9	-9	-50%
Poweshiek	5	2	0	-5	-100%
Ringgold	3	0	0	-3	N/A
Sac	2	4	3	1	50%
Scott	19	8	6	-13	-68%
Shelby	6	10	7	1	17%
Sioux	15	15	13	-2	-13%
Story	9	2	3	-6	-67%
Tama	3	1	0	-3	-100%
Taylor	3	3	2	-1	-33%
Union	2	2	0	-2	-100%
Van Buren	3	1	1	-2	-67%
Wapello	5	4	4	-1	-20%
Warren	6	0	0	-6	N/A
Washington	6	7	7	1	17%
Wayne	1	1	0	-1	-100%
Webster	12	8	8	-4	-33%
Winnebago	6	4	5	-1	-17%
Winneshiek	5	2	2	-3	-60%
Woodbury	25	16	19	-6	-24%
Worth	2	2	2	0	0%
Wright	7	6	5	-2	-29%
	<b>693</b>	<b>487</b>	<b>351</b>	<b>-342</b>	<b>-49%</b>

Source: Iowa Health Professions Tracking Center, Office of Statewide Clinical Education Programs  
University of Iowa Carver College of Medicine, June 2015

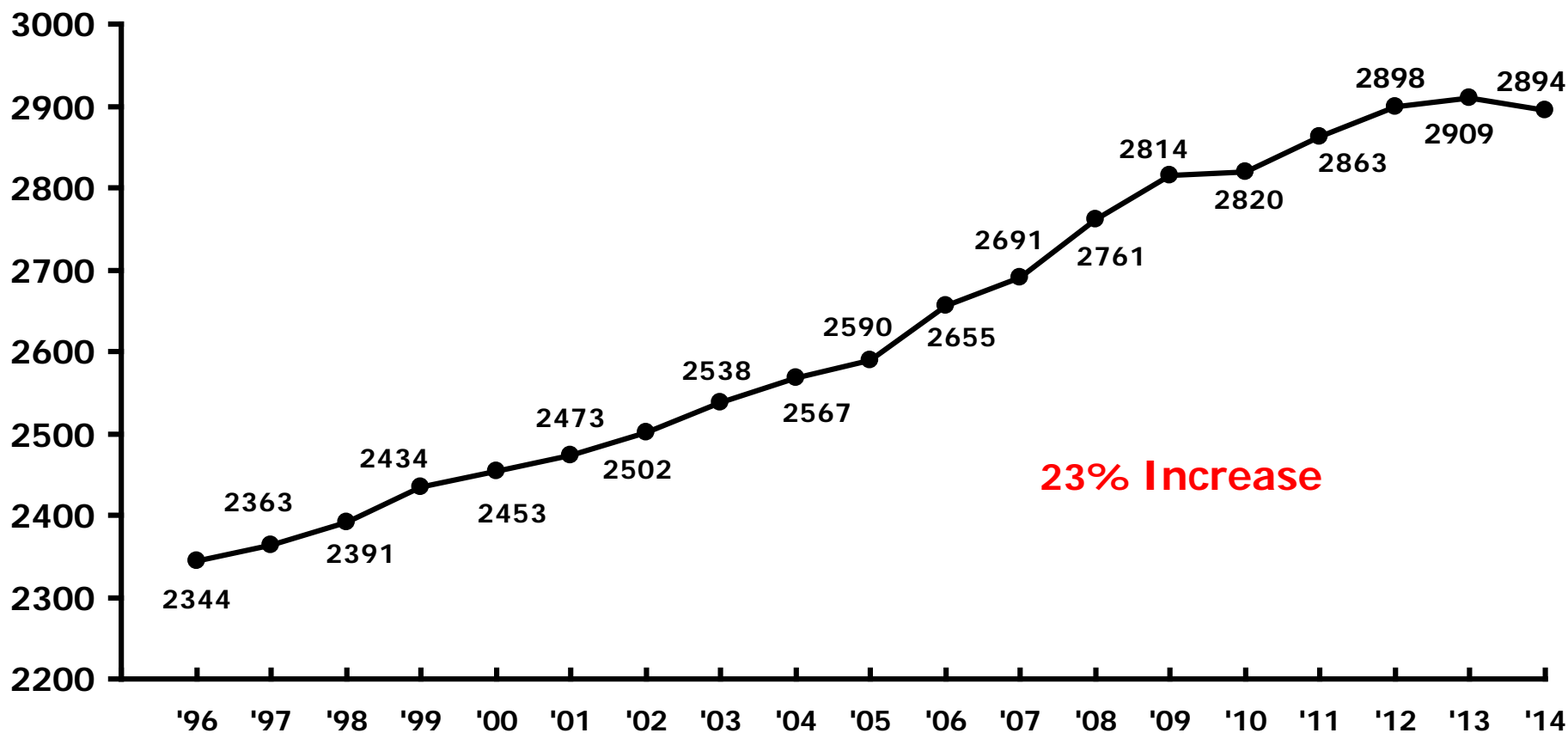
K:\Doc\PharmYE2014\Pharm2Pop\1997-05-14-Ind.xls

# CHANGE IN COUNTY POPULATION TO PHARMACIST RATIOS 1997 to 2014

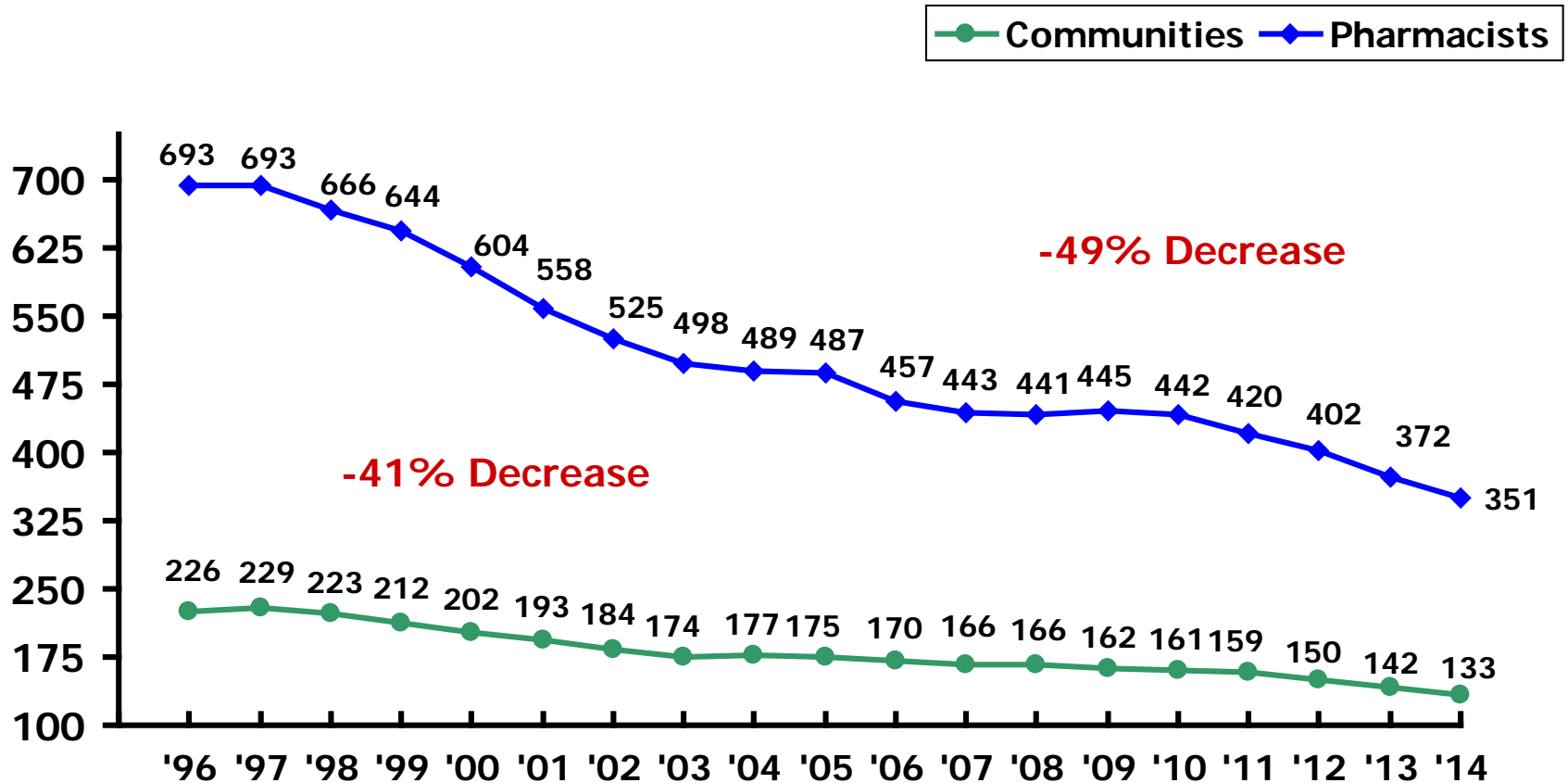




# IOWA PHARMACISTS 1996 - 2014



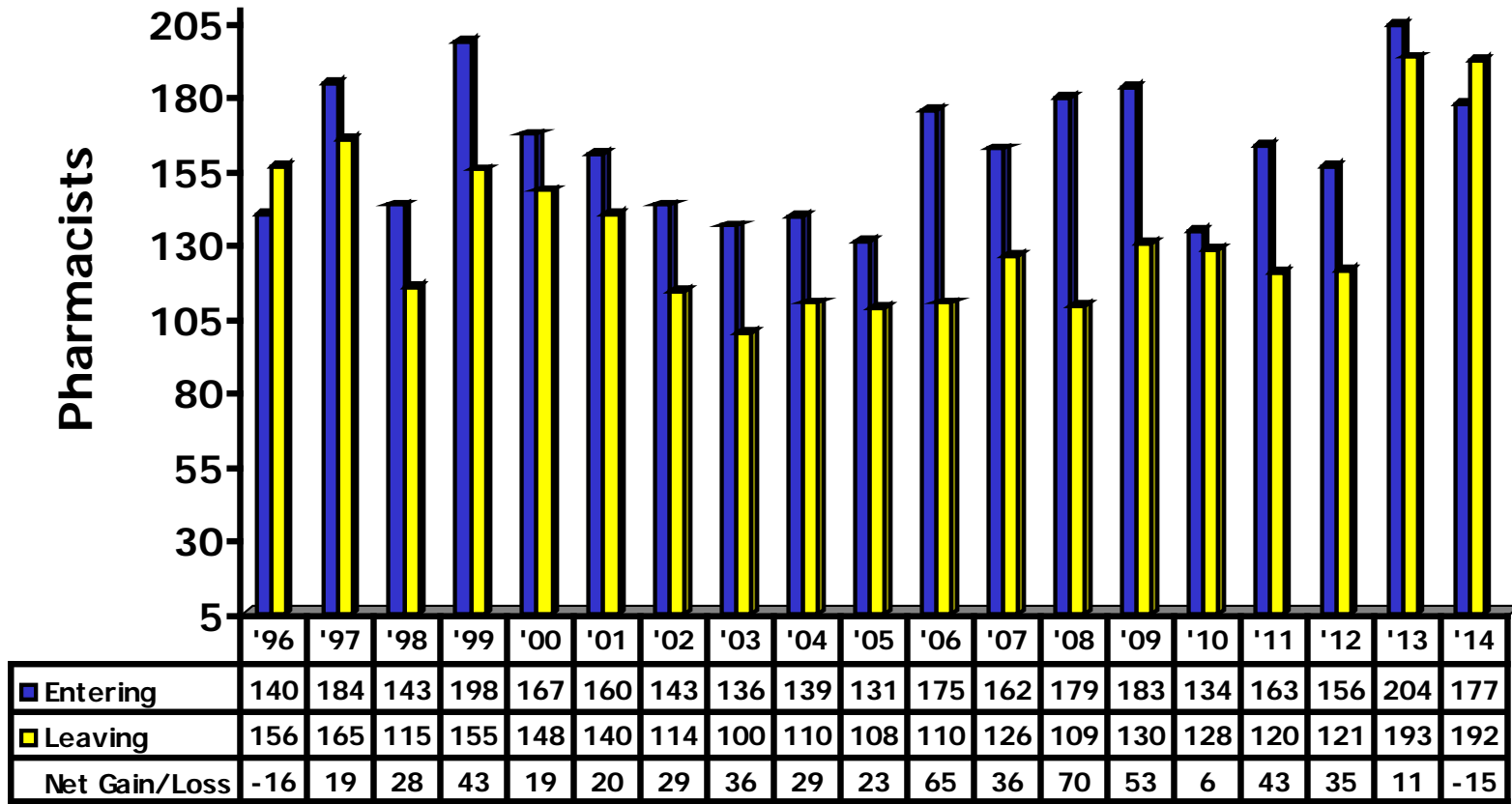
# IOWA COMMUNITIES WITH INDEPENDENT PHARMACISTS 1996 - 2014



# IOWA PHARMACISTS

## Net Gain/Loss

### 1996 - 2014

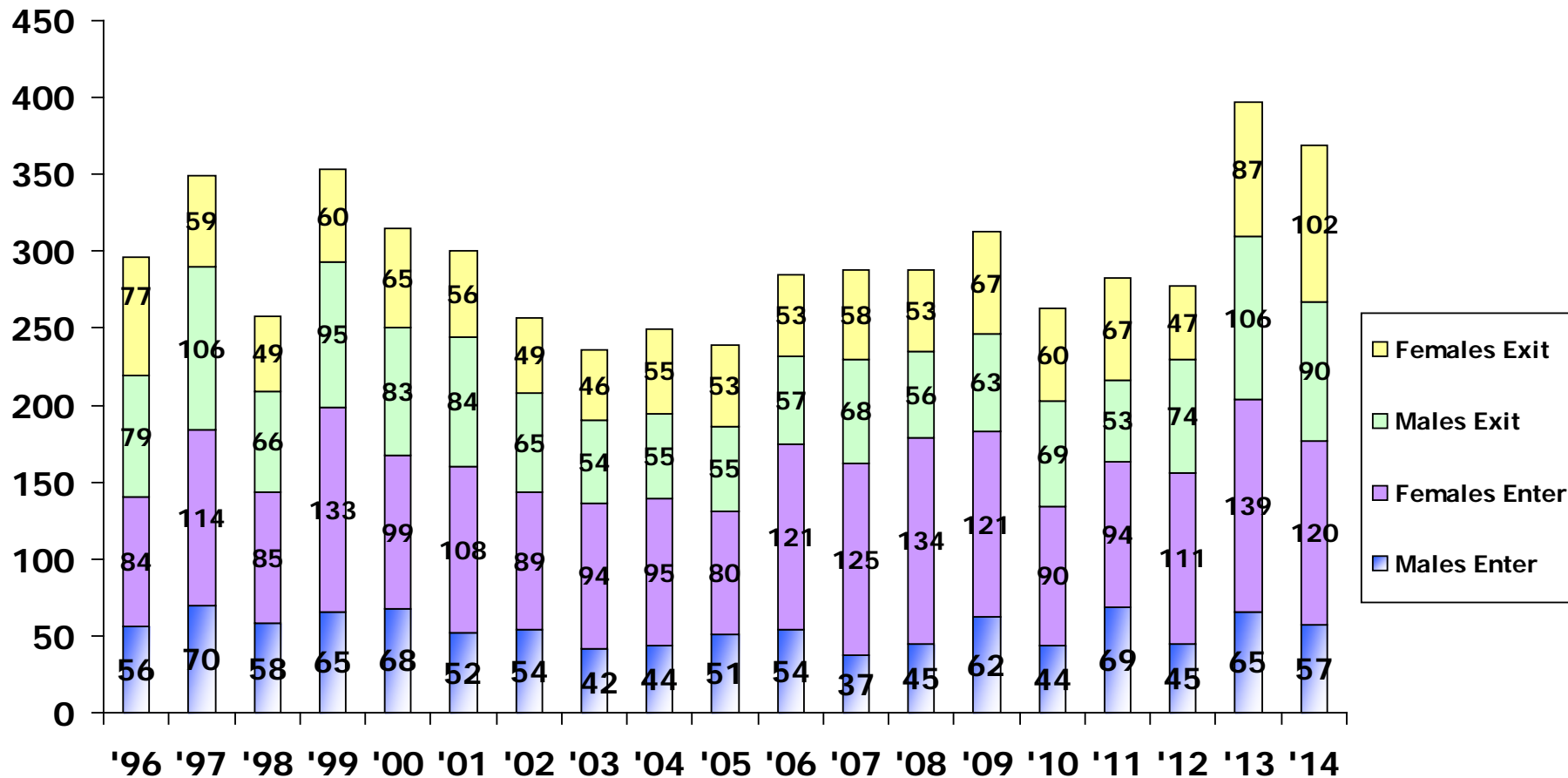


Average Net Gain/Loss = 28/year  
 5-Year Average Net Gain/Loss = 16/yr

# ALL IOWA PHARMACISTS

## Entry/Exit by Gender

### 1996-2014



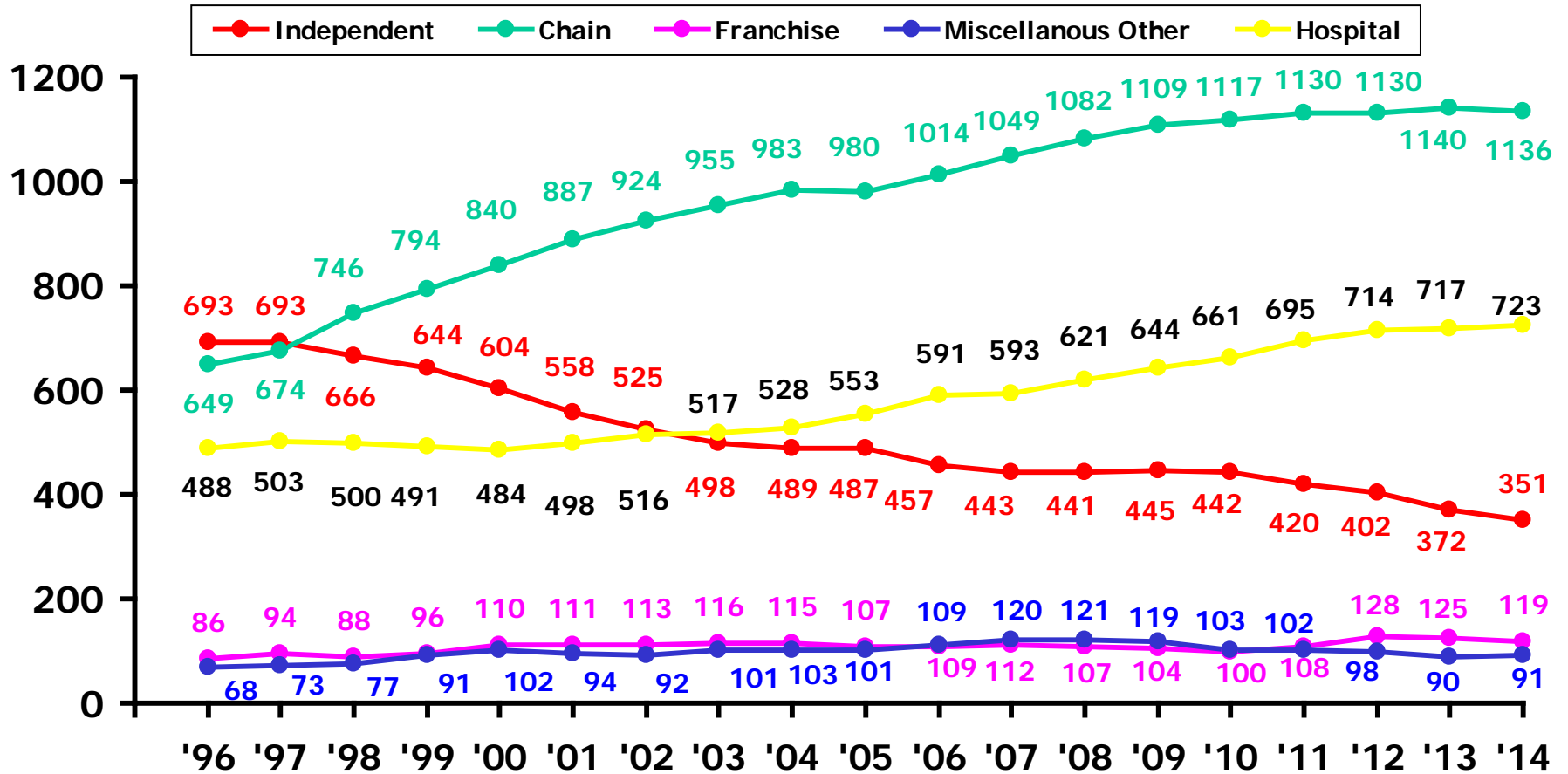
# IOWA PHARMACISTS BY ACTIVITY

## Net Increase/Decrease 1996 vs. 2014

	<u>1996</u>	<u>2014</u>	<u>Change (%)</u>
• All Active Pharmacists	2344	2894	+550 (+23%)
• Community Pharmacists	1496	1697	+201 (+13%)
• Hospital Pharmacists	488	723	+235 (+48%)
• All Other Pharmacists	360	474	+114 (+28%)

# IOWA PHARMACISTS

## Select Professional Activity Trends\* 1996 - 2014

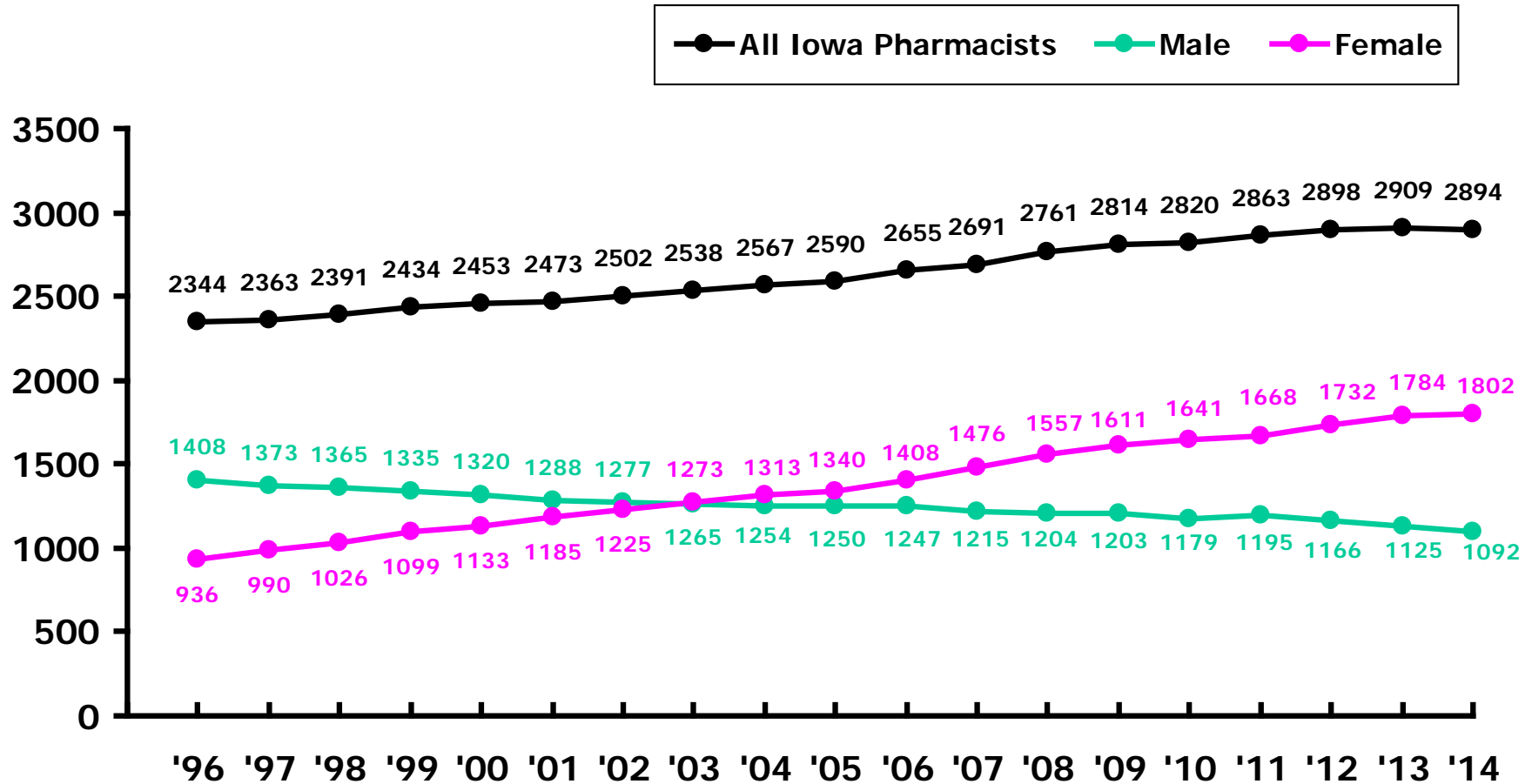


\*Community vs hospital activities (does not include VA)

# IOWA PHARMACISTS

## Gender

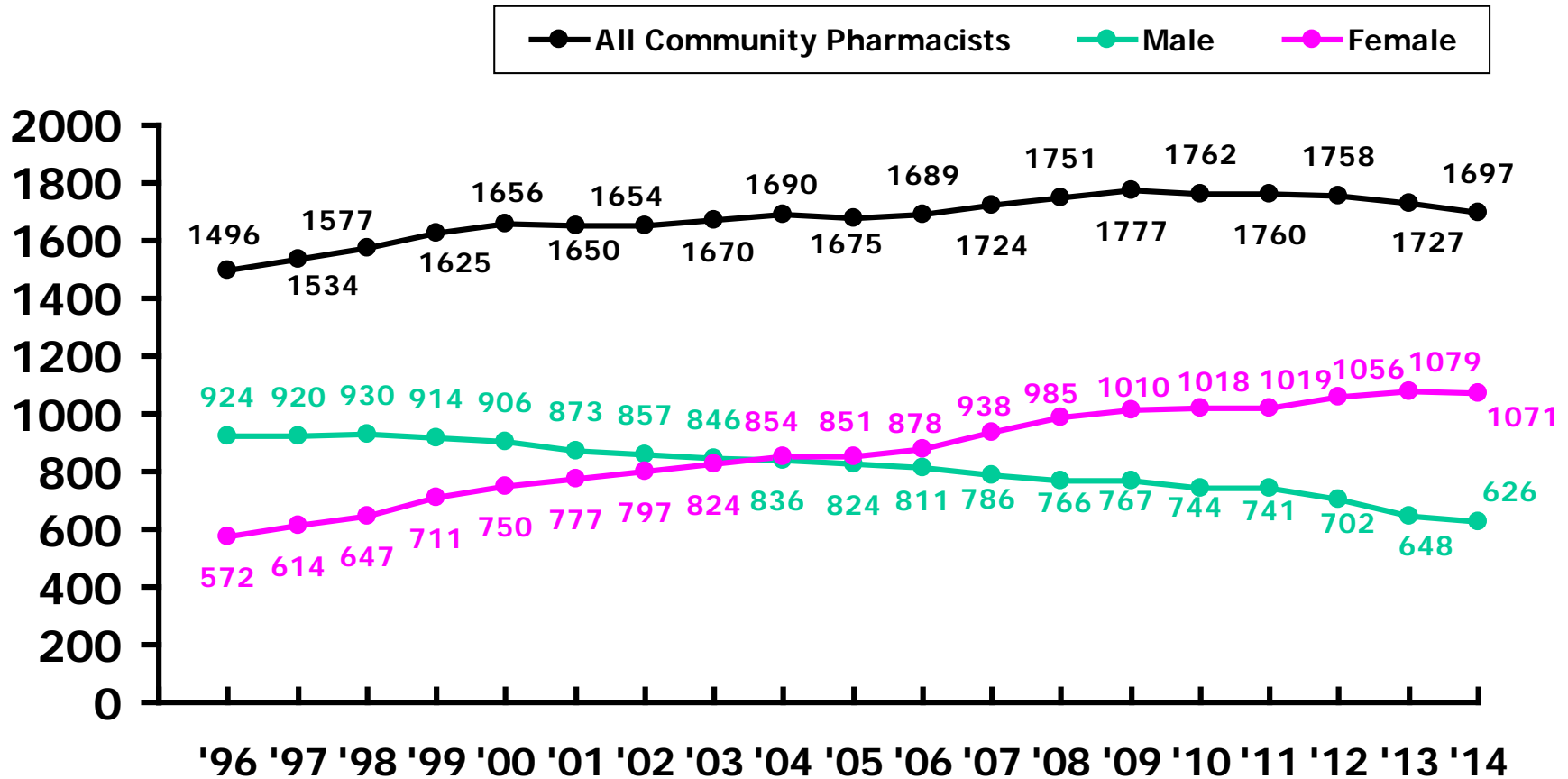
### 1996 - 2014



# IOWA COMMUNITY PHARMACISTS

## Gender

### 1996 - 2014

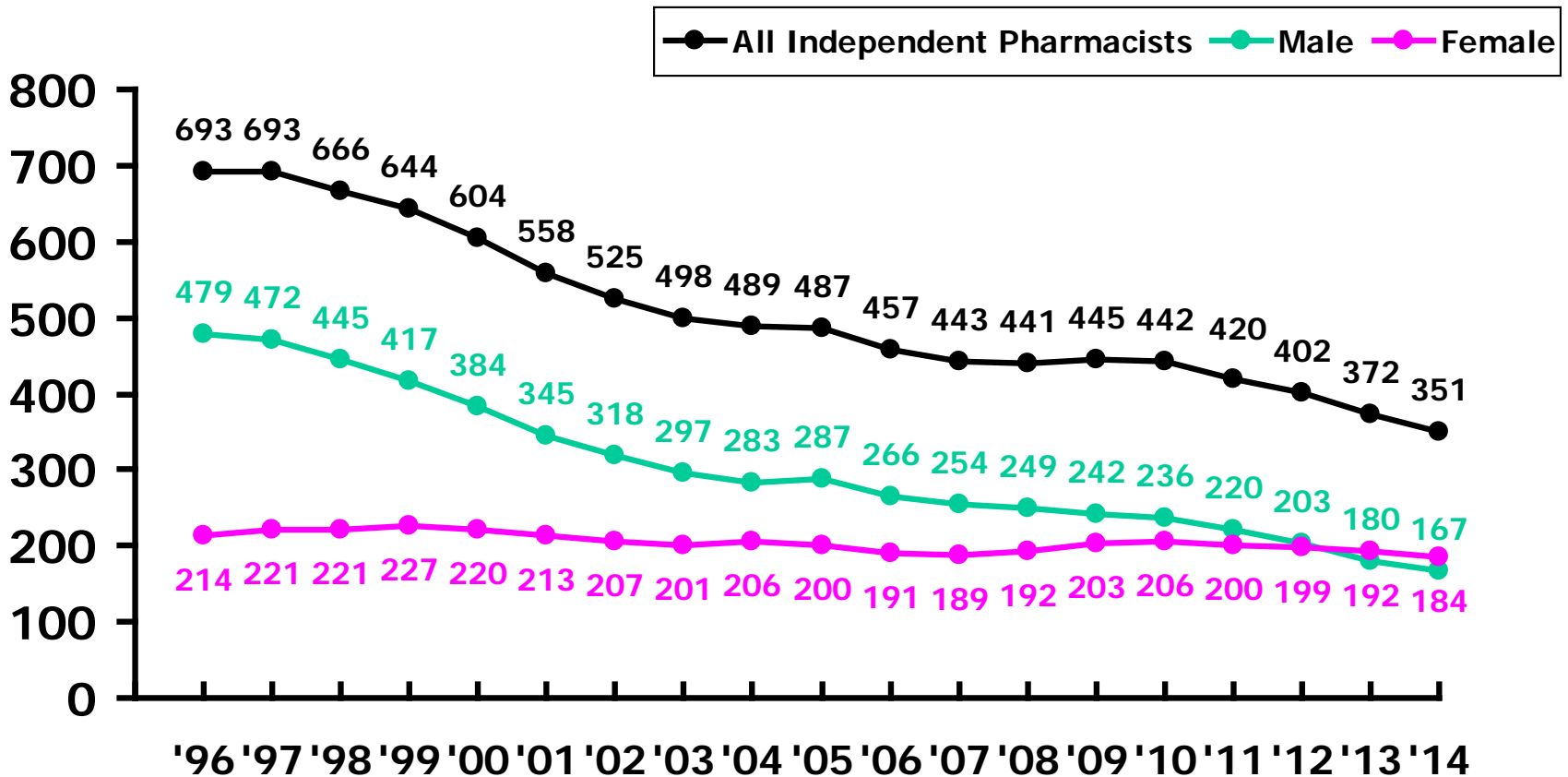




# IOWA INDEPENDENT PHARMACISTS

## Gender

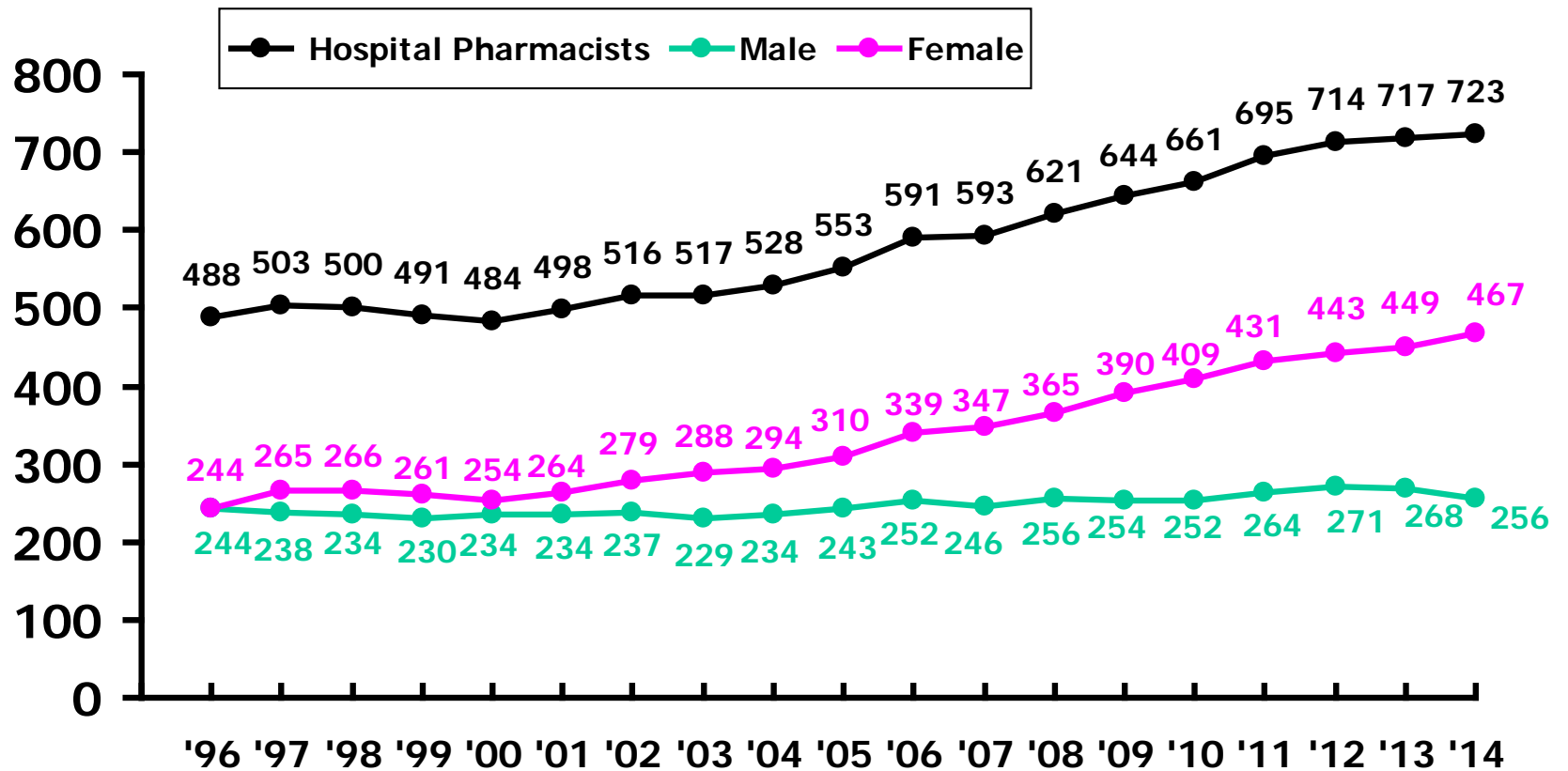
### 1996 - 2014



# IOWA HOSPITAL PHARMACISTS

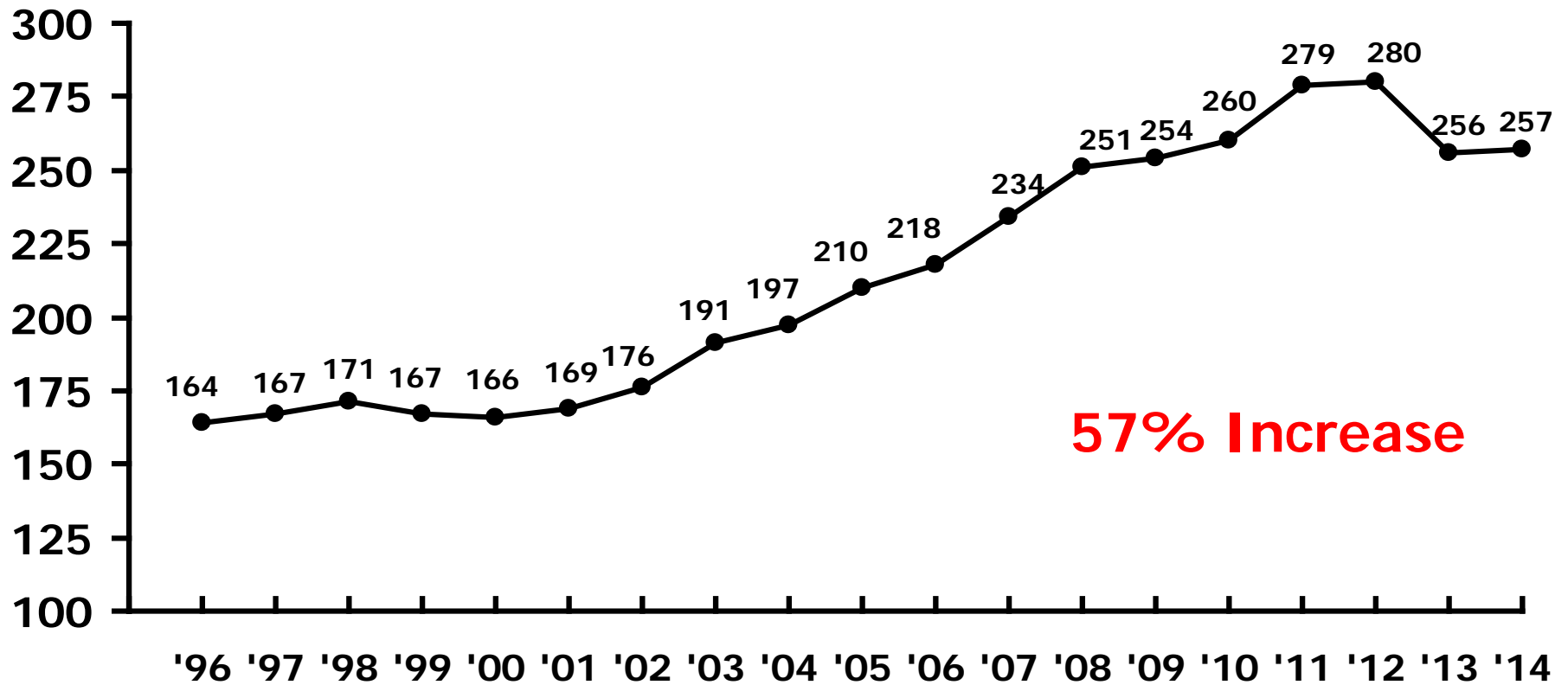
## Gender

### 1996 - 2014

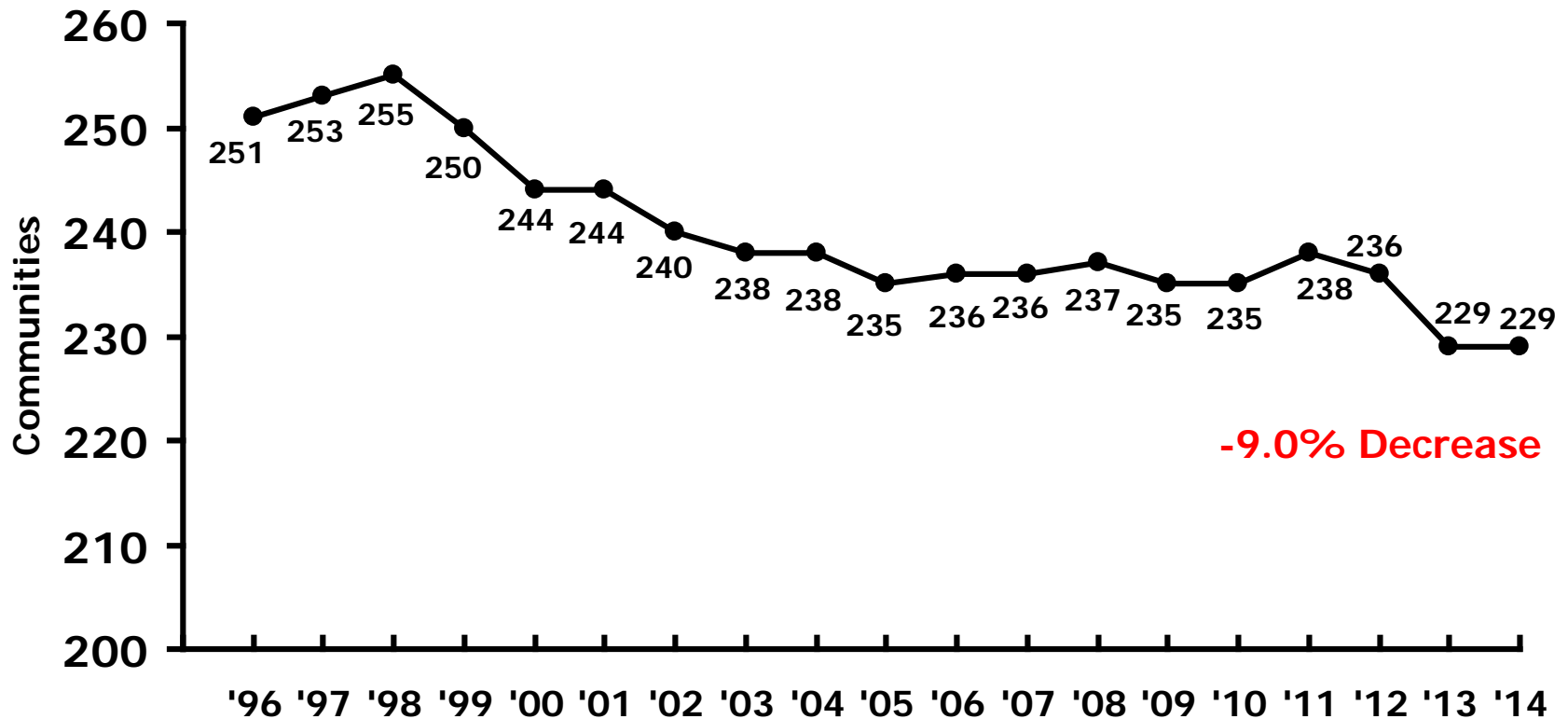


# IOWA PHARMACISTS

Age  $\geq$  55 with Population  $\leq$  10,000  
1996 - 2014



# IOWA COMMUNITIES WITH ONE OR MORE PHARMACISTS 1996 - 2014



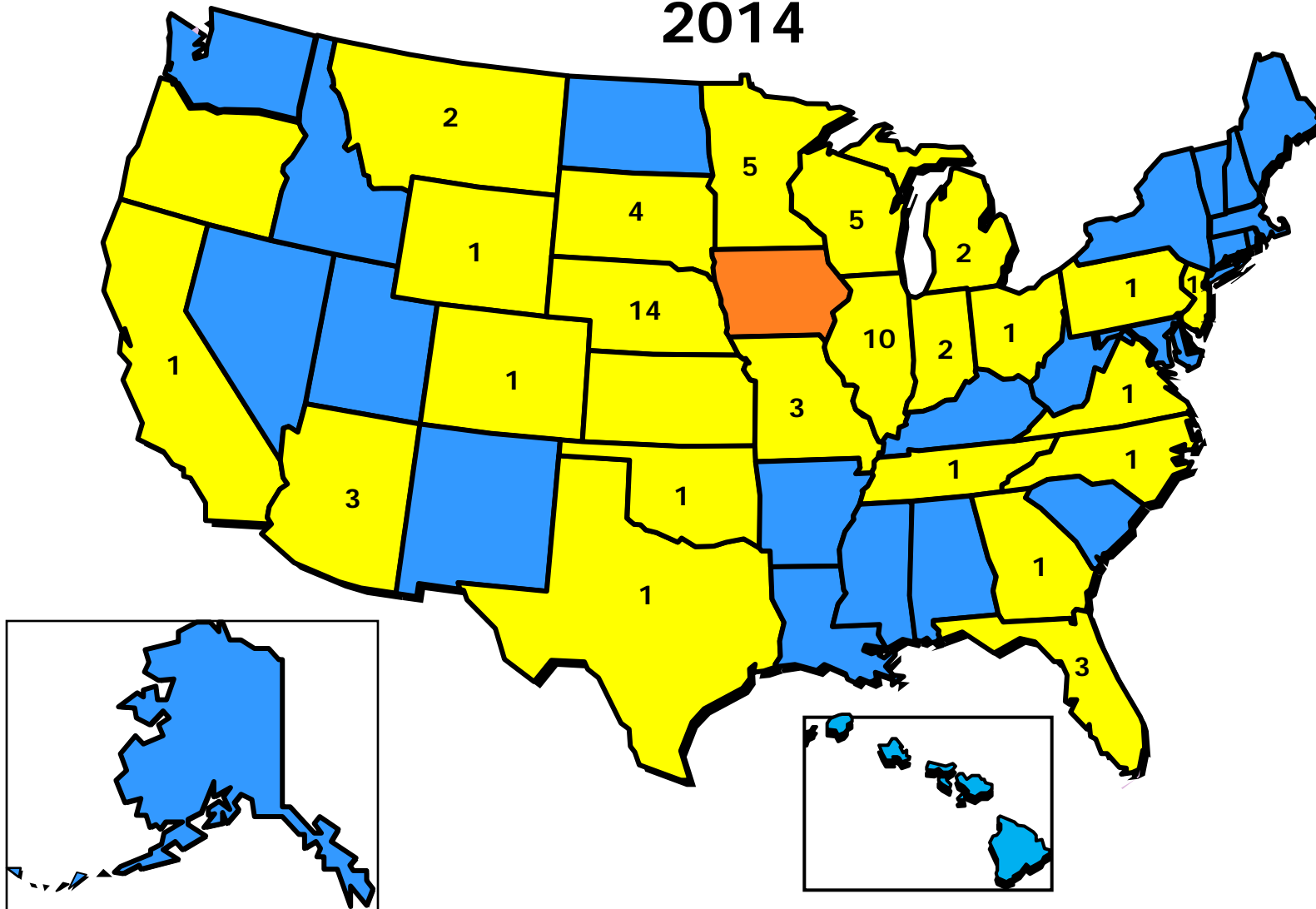
# IOWA PHARMACISTS

## Attrition Analysis

### 1996-2014

Year	Retirement	Relocation	Death	Health	Training	Inactive	Loss of License	Military	Misc.	Total
1996	27	95	5	1	3	23	-	-	2	156
1997	29	109	3	2	2	17	-	1	2	165
1998	23	72	6	1	1	7	1	1	3	115
1999	44	90	3	1	2	10	1	-	4	155
2000	21	96	4	-	6	15	1	-	5	148
2001	34	85	3	3	1	11	3	-	-	140
2002	23	70	2	1	1	16	-	1	-	114
2003	16	49	5	1	1	24	1	-	3	100
2004	26	52	7	1	-	15	1	-	8	110
2005	21	64	4	-	1	18	-	-	-	108
2006	31	64	3	3	-	9	-	-	-	110
2007	25	59	1	-	-	35	1	1	4	126
2008	23	45	3	2	-	32	2	-	2	109
2009	27	52	6	2	1	38	3	-	1	130
2010	39	52	1	-	1	32	2	-	1	128
2011	32	42	3	1	1	31	6	-	4	120
2012	43	38	3	3	-	26	5	-	3	121
2013	78	53	2	1	2	49	2	-	6	193
2014	62	65	1	1	-	53	3	-	7	192
<b>Total</b>	<b>624</b>	<b>1252</b>	<b>65</b>	<b>24</b>	<b>23</b>	<b>461</b>	<b>32</b>	<b>4</b>	<b>55</b>	<b>2540</b>
<b>Annual Average</b>	<b>32.8</b>	<b>65.9</b>	<b>3.4</b>	<b>1.3</b>	<b>1.2</b>	<b>24.3</b>	<b>1.7</b>	<b>0.2</b>	<b>2.9</b>	<b>133.7</b>

# RELOCATION OF IOWA PHARMACISTS IN US (65)\* 2014

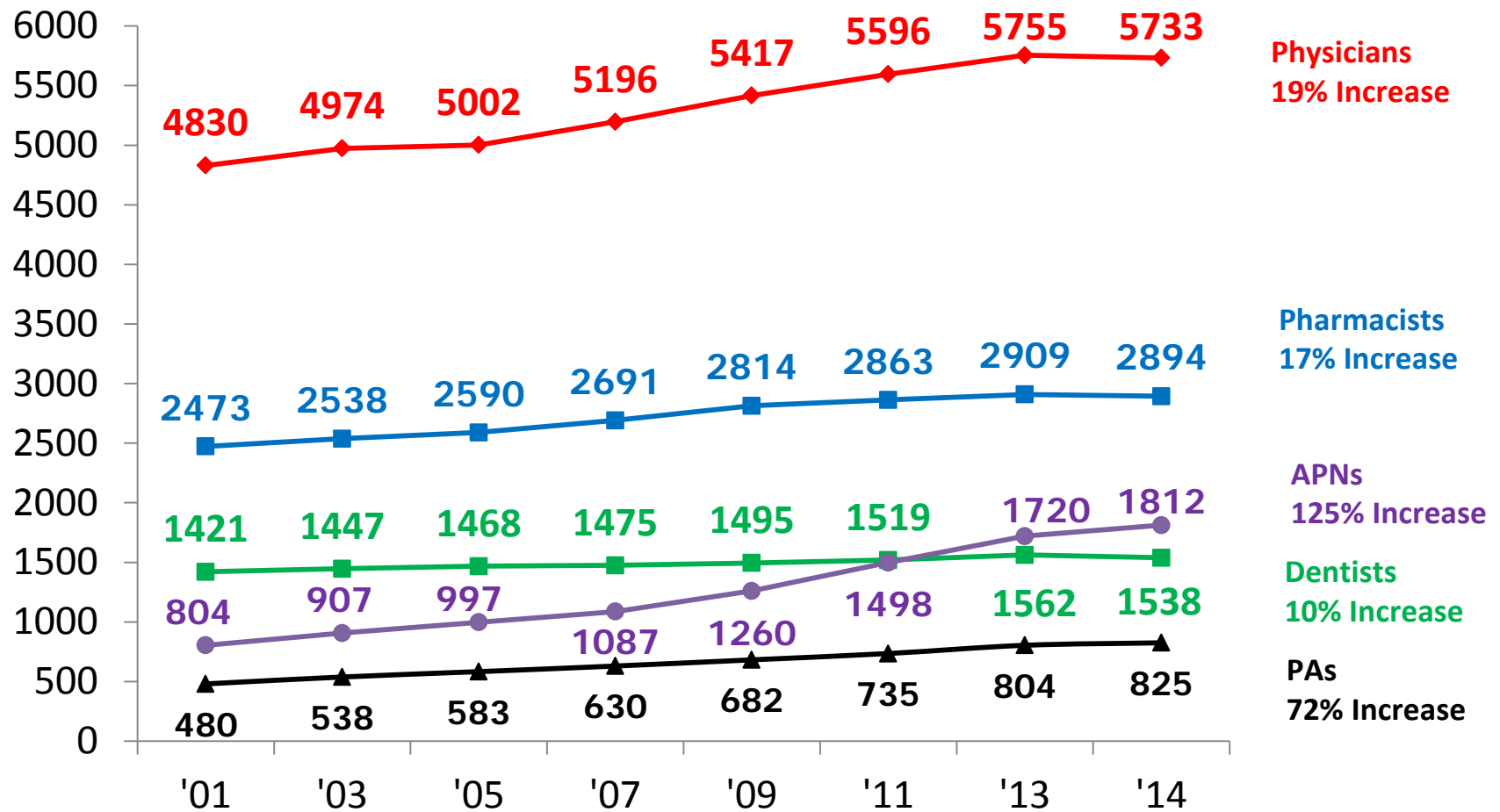


# IOWA HEALTH PROFESSIONS INVENTORY

## Composition of Workforce - 2014

<b>Physicians</b>	<b>5733</b>
<b>Pharmacists</b>	<b>2894</b>
<b>Dentists</b>	<b>1538</b>
<b>Nurse Practitioners</b>	<b>1812</b>
<b>Physician Assistants</b>	<b>825</b>

# IOWA HEALTH PROFESSIONS INVENTORY 2001-2014





# IOWA HEALTH PROFESSIONS INVENTORY

## Composition of Workforce - 2014

### Net Gain/Loss Summary

	<u>Entering</u>	<u>%</u>	<u>Leaving</u>	<u>%</u>	<u>Net</u>	<u>%</u>	<u>Total</u>
Physicians	367	6.4%	402	7.0%	-35	-0.6%	5733
Pharmacists	177	6.1%	192	6.6%	-15	-0.5%	2894
Dentists	69	4.5%	93	6.0%	-24	-1.6%	1538
Nurse Practitioners	217	12.0%	125	6.9%	92	5.1%	1812
Physician Assistants	66	8.0%	45	5.5%	21	2.5%	825

# IOWA HEALTH PROFESSIONS INVENTORY

## Composition of Workforce - 2014

### Retirement Summary

	<u>Retired</u>	<u>%</u>	<u>Leaving</u>	<u>Average Age</u>	<u>Average Retirement Age</u>
Physicians	124	31%	402	50	67
Pharmacists	62	32%	192	44	66
Dentists	51	53%	96	54	66
Nurse Practitioners	20	16%	125	46	65
Physician Assistants	7	15%	46	44	64

# IOWA HEALTH PROFESSIONS INVENTORY

## Composition of Workforce - 2014

### Gender

	<u>Male</u>	<u>%</u>	<u>Female</u>	<u>%</u>	<u>Total</u>
Physicians	4066	71%	1667	29%	5733
Physician Assistants	241	29%	584	71%	825
Dentists	1137	74%	401	26%	1538
Pharmacists	1092	38%	1802	62%	2894
APNs	222	12%	1590	88%	1812

# IOWA HEALTH PROFESSIONS INVENTORY

## Composition of Workforce – 2014

### Age

	<u>Physicians</u>	<u>Physician Assistants</u>	<u>Dentists</u>	<u>Pharmacists</u>	<u>APNs</u>
<40	1304 23%	393 48%	473 31%	1226 43%	642 35%
40-49	1580 28%	178 22%	294 19%	700 24%	441 24%
50-59	1635 28%	176 21%	315 24%	587 20%	463 26%
≥ 60	1214 21%	78 9%	406 26%	381 13%	266 15%
Total	5733	825	1538	2894	1812

# IOWA HEALTH PROFESSIONS INVENTORY

## Distribution by Community Size

### 2014

Community Population	No. of Communities With Providers			No. of Providers			% of Providers		
	Pharms	Phys	PA	Pharms	Phys	PA	Pharms	Phys	PA
< 1,000	16	15	22	21	21	23	0.7%	0.4%	2.8%
1,000-4,999	133	119	76	392	411	124	13.5	7.2	15.0
5,000-9,999	42	42	33	388	500	102	13.4	8.7	12.4
10,000-49,999	28	28	25	639	1107	143	22.1	19.3	17.3
50,000-99,999	8	8	8	879	2445	280	30.4	42.6	33.9
≥ 100,000	<u>2</u>	<u>2</u>	<u>2</u>	<u>575</u>	<u>1249</u>	<u>153</u>	<u>19.9</u>	<u>21.8</u>	<u>18.6</u>
Total	229	214	166	2894	5733	825		100%	