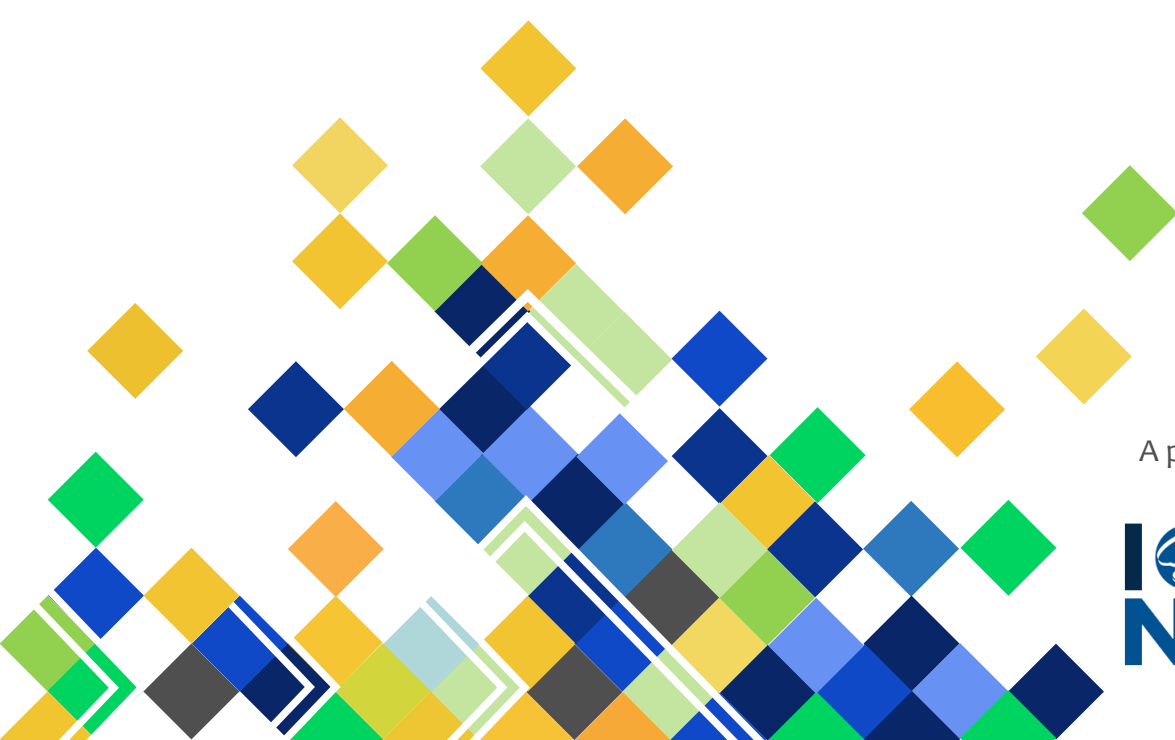


NURSING TRENDS

NURSE LICENSEES AND NURSING EDUCATION IN
IOWA

RELEASED JULY 2015



A publication of:



IOWA CENTER FOR
NURSING
WORKFORCE

A Publication of:



MISSION STATEMENT

The Iowa Center for Nursing Workforce exists to support a dynamic, well-prepared and diverse nurse workforce to meet the health and wellness needs of Iowans.



MISSION STATEMENT

The mission of the board is to protect the public health, safety and welfare by regulating the licensure of nurses, the practice of nurses, nursing education and continuing education.

For more information contact:

Iowa Center for Nursing Workforce

Laura Hudson, MSN, RN
Associate Director—Workforce
515.281.8808
laura.hudson@iowa.gov

nursing.iowa.gov/home/iowa-center-nursing-workforce

Iowa Board of Nursing

Lynn Linder
Executive Officer
515.281.5535
lynn.linder@iowa.gov

nursing.iowa.gov

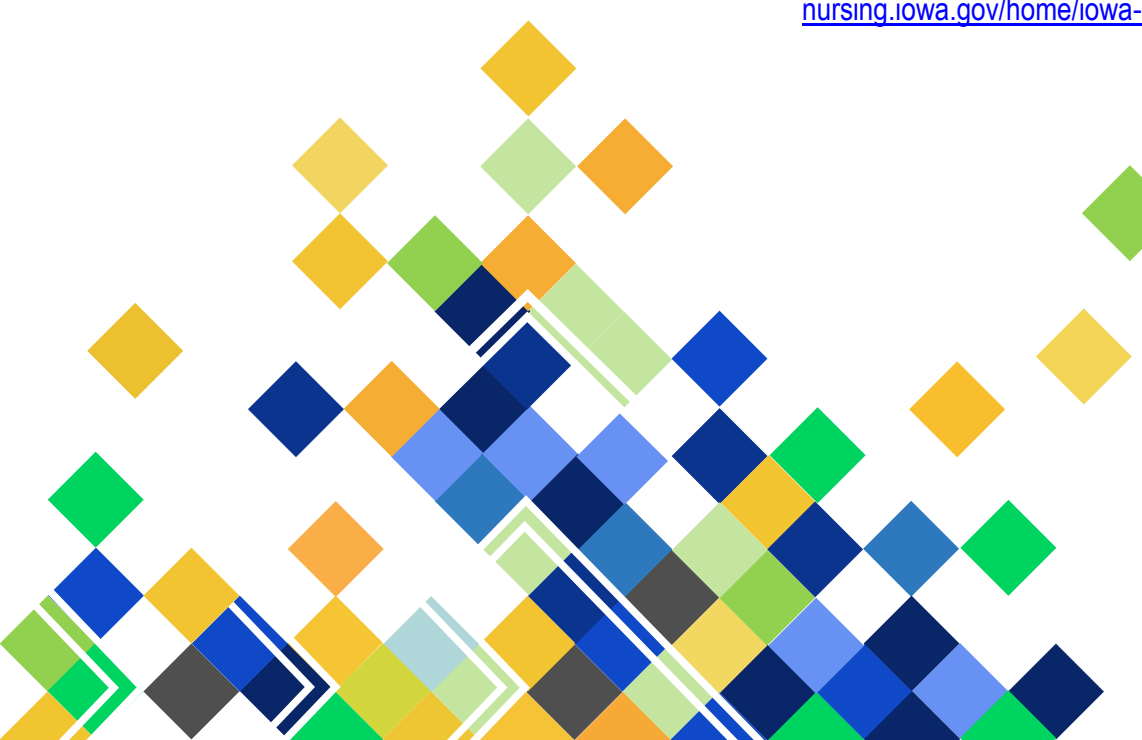
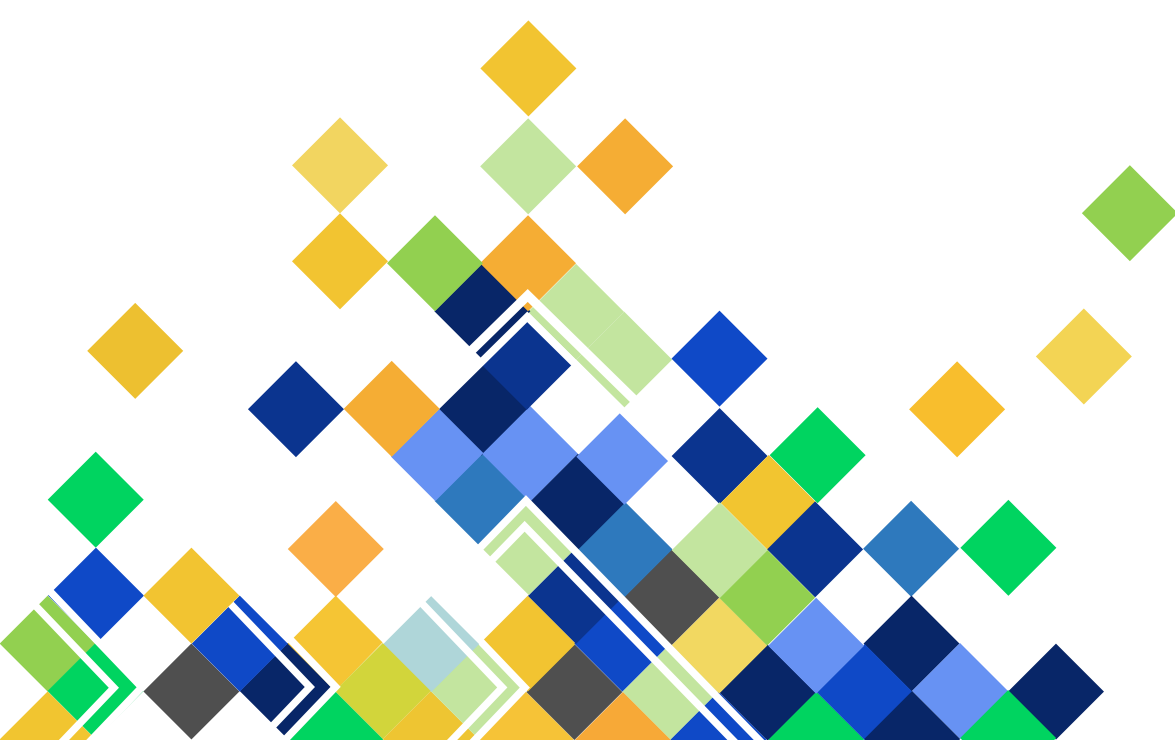
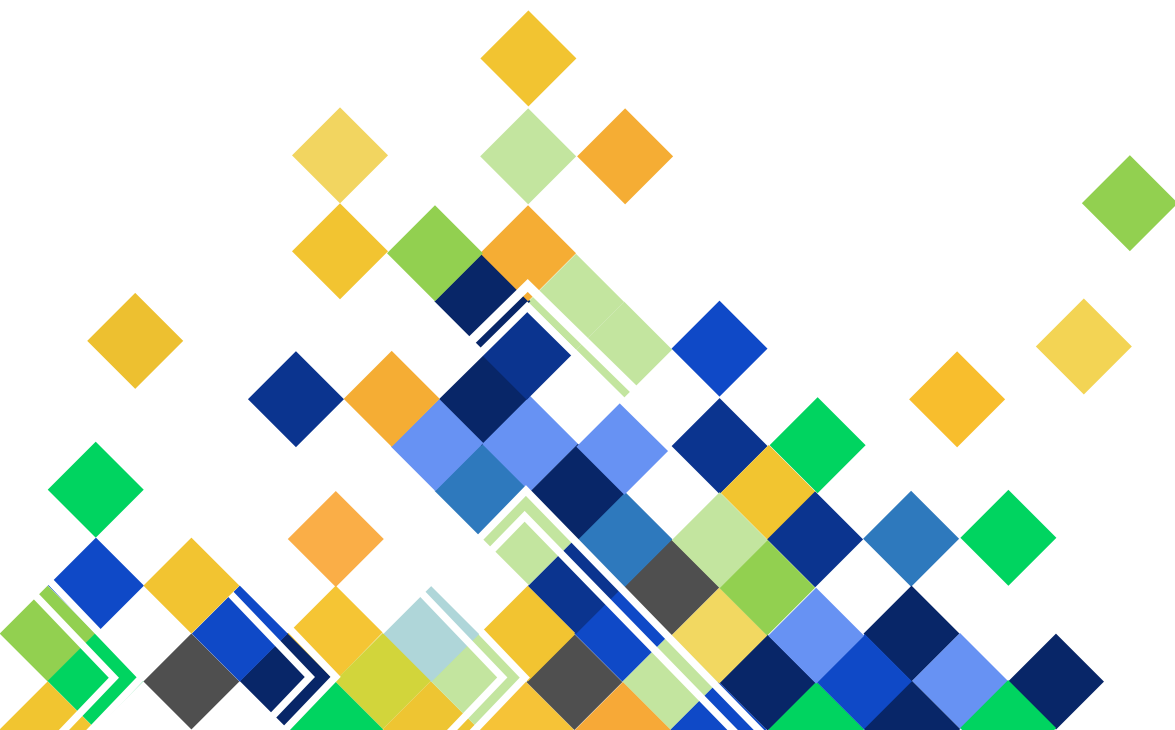


TABLE OF CONTENTS

INTRODUCTION AND METHODOLOGY	3
NURSING SUPPLY	5
Active Licenses	5
Active Population	6
Age Range of Licensees	7
Education of Licensees	9
NURSING EDUCATION	14
Nursing Education Programs	14
Admission Data	15
Enrollment Data	19
Graduation Data	23
Faculty Data	27
CONCLUSION	28





INTRODUCTION AND METHODOLOGY

Nationwide, the capture of accurate nursing workforce supply data is a major concern to plan for access to care in the U.S. health system (HRSA, 2013). The development and staffing of the Iowa Center for Nursing Workforce occurred in 2012, under the umbrella of the Iowa Board of Nursing (IBON). With the implementation of a new online database in November 2012, IBON began building a more complete picture of the nursing workforce for licensed practical nurses (LPN), registered nurses (RN), and advanced registered nurse practitioners (ARNP) licensed in the State of Iowa.

During the licensure renewal process, nurses are required to provide information according to the Nursing Supply Minimum Dataset answering questions about gender, ethnicity, original level of nursing degree credential, highest level of education, employment location, setting, and work status. Future iterations of the *Nursing Trends* report will include information beyond the licensure and education components provided in this issue.

The data in this report is based on active Iowa nurse licensees. The licensees **may or may not** be actively employed in Iowa. Data is collected from the *Iowa Board of Nursing Annual Report* and the *Annual Program Reports*, as submitted by the Heads of Nursing Education Programs. These reports are posted on the board's website at nursing.iowa.gov.

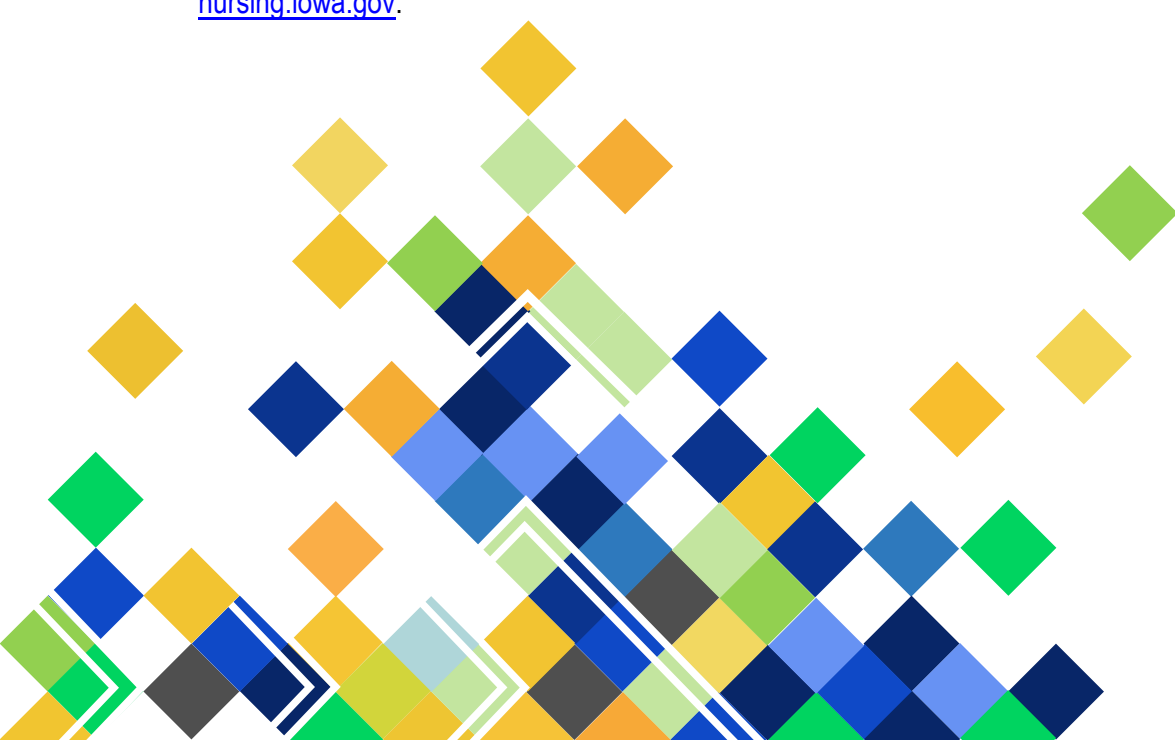
This report is a high level analysis of trends in workforce and available nursing education programs in Iowa. Unless otherwise noted, data is reported for the last 11 years (2004-2014).

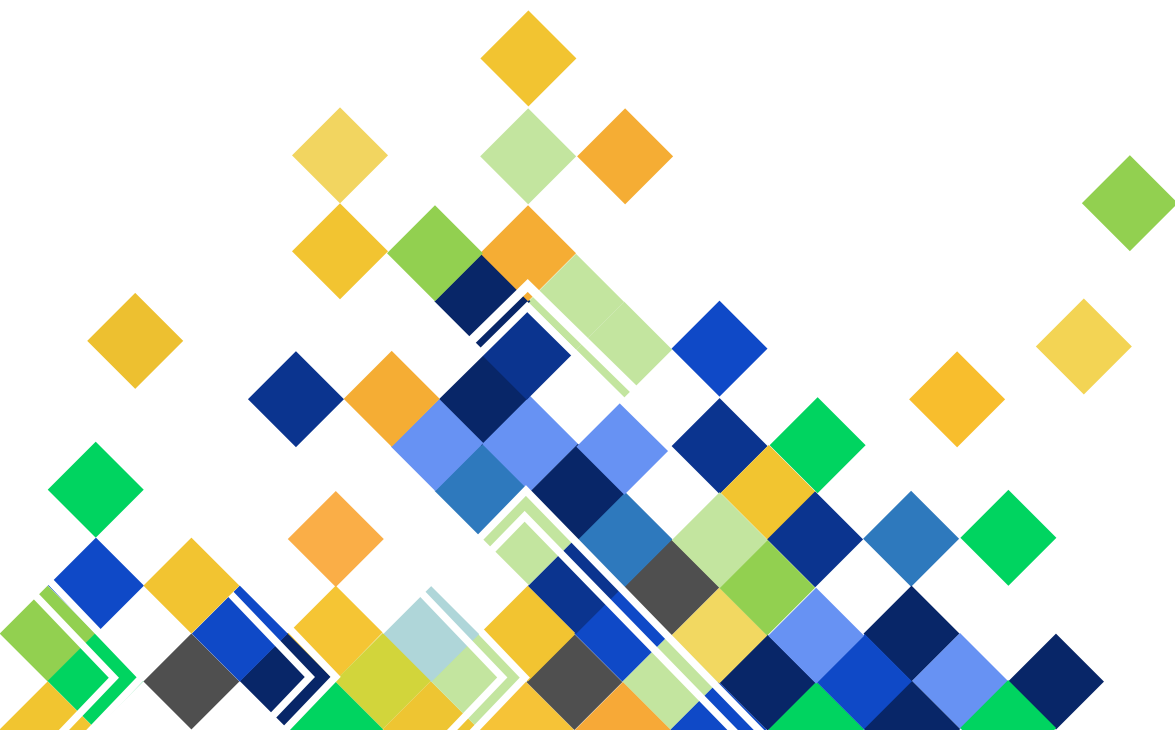
Nursing education programs are counted separately by site and type. In some instances, more than one site may share administration, a common philosophy, curriculum, and faculty.

Charts and graphs have been abridged for comparison of the most recent years. Data is available in its entirety from 1986.

U.S. Department of Health and Human Services, Health Resources and Services Administration (HRSA), Bureau of Health Professions, National Center for Health Workforce Analysis. (2013). *The U.S. nursing workforce: Trends in supply and education* (October 2013). Retrieved from:

<http://bhpr.hrsa.gov/healthworkforce/supplydemand/nursing/nursingworkforce/nursingworkforcefullreport.pdf>





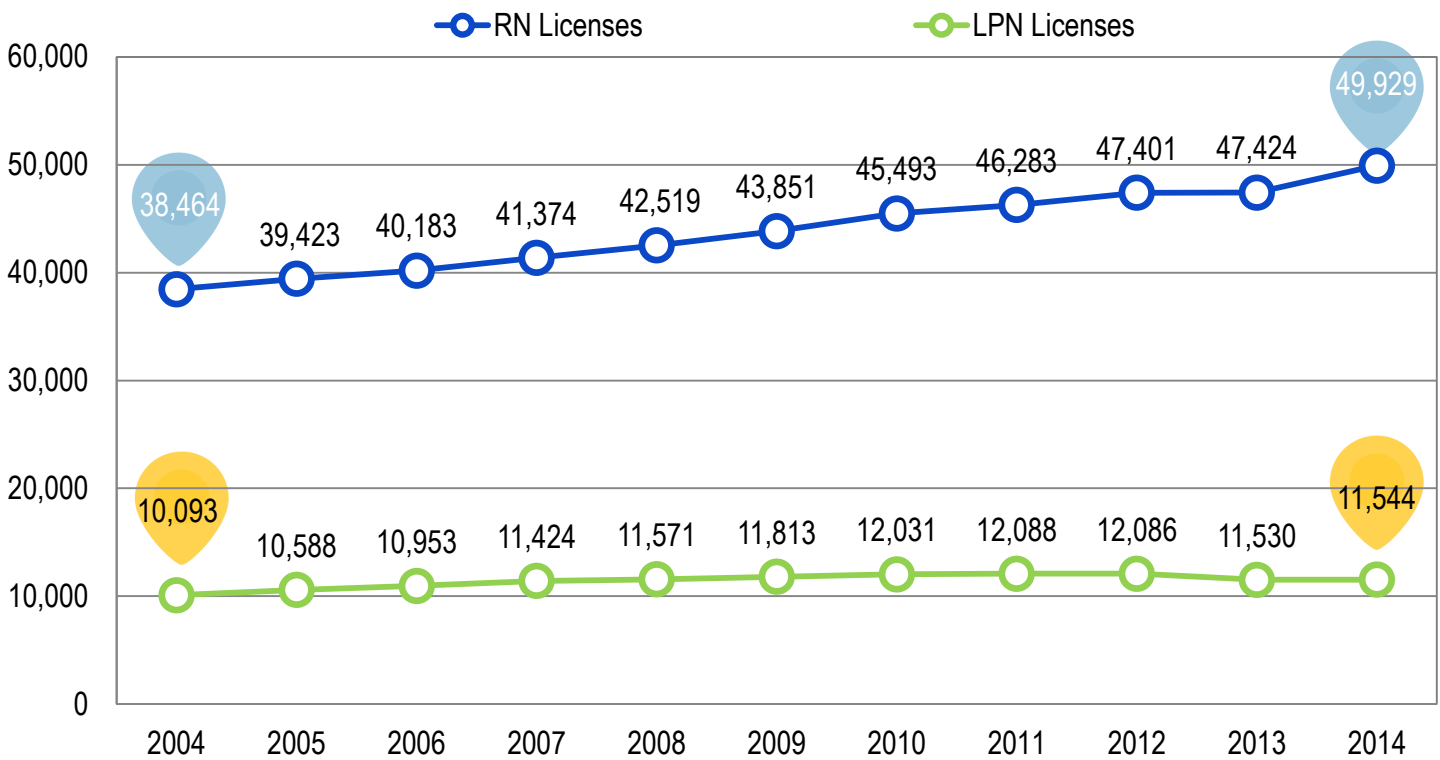
NURSING SUPPLY

ACTIVE LICENSES

The following charts are prepared using the Iowa Board of Nursing annual reports from 2004 to 2014. The graphs illustrate trends in Iowa and provide a basis of comparison for Registered Nurse (RN) and Licensed Practical Nurse (LPN) data.

Note: In Iowa, nurses may hold RN and LPN licenses concurrently. For this reason, the categories are not mutually exclusive on the following charts.

FIGURE 1: Number of Actively Licensed Registered Nurses and Licensed Practical Nurses, 2004-2014



The number of active RNs in Iowa steadily increased from 38,464 in 2004 to 49,929 in 2014. Resulting in an overall growth of 29.8 percent or a net gain of 11,465.

Likewise, the number of active LPNs increased from 10,093 in 2004 to 11,544 in 2014, a net gain of 1,451. This represents a growth rate of 14.4 percent. However, since 2011 there has been an overall decrease in the number of active LPN licenses of 544; though there was a slight uptick of 14 active licenses between 2013 and 2014.

Note: The Nurse Licensure Compact became effective in Iowa on July 1, 2000. For information about the multi-state licensure compact, visit the Iowa Board of Nursing website at: nursing.iowa.gov.

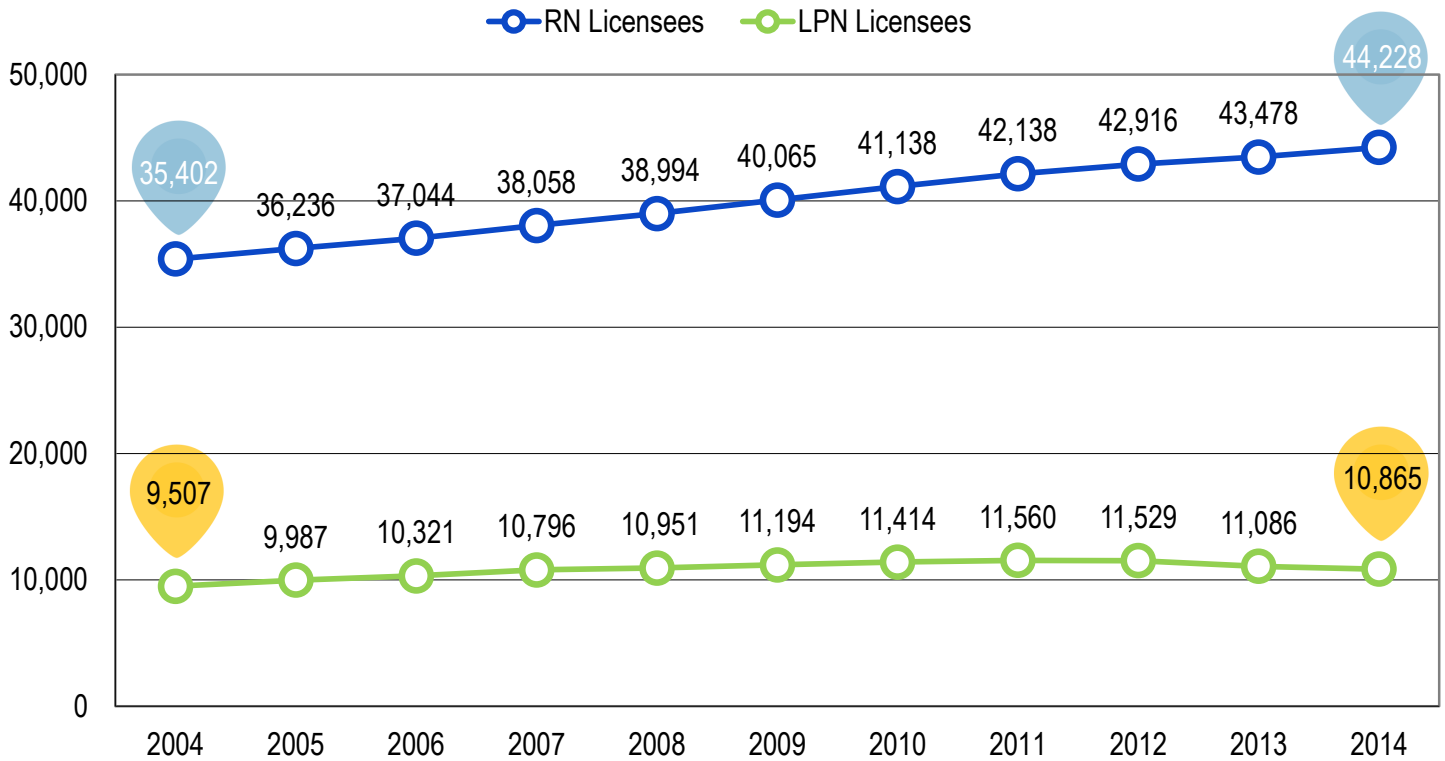
{ A nearly **30%** increase in active RNs
COMPARED TO
 an approximate **14%** increase in active LPNs
 (2004 - 2014) }

ACTIVE POPULATION

The following chart shows the population of active nurses in Iowa. The number of RN Iowa residents has steadily increased each year between 2004 and 2014. Over the course of this eleven-year time frame the total number of active RN residents increased by 24.9 percent.

During this same time period, the number of LPN residents in Iowa increased by 14.3 percent; however, since 2012 the total number of active LPN residents experienced a decline of 5.8 percent.

FIGURE 2: Active Nurse Population in Iowa, 2004-2014



Active RN residents increased by about **3% COMPARED TO A DECREASE** of nearly **6%** Among active LPN residents (2012 - 2014)

AGE RANGE OF LICENSEES

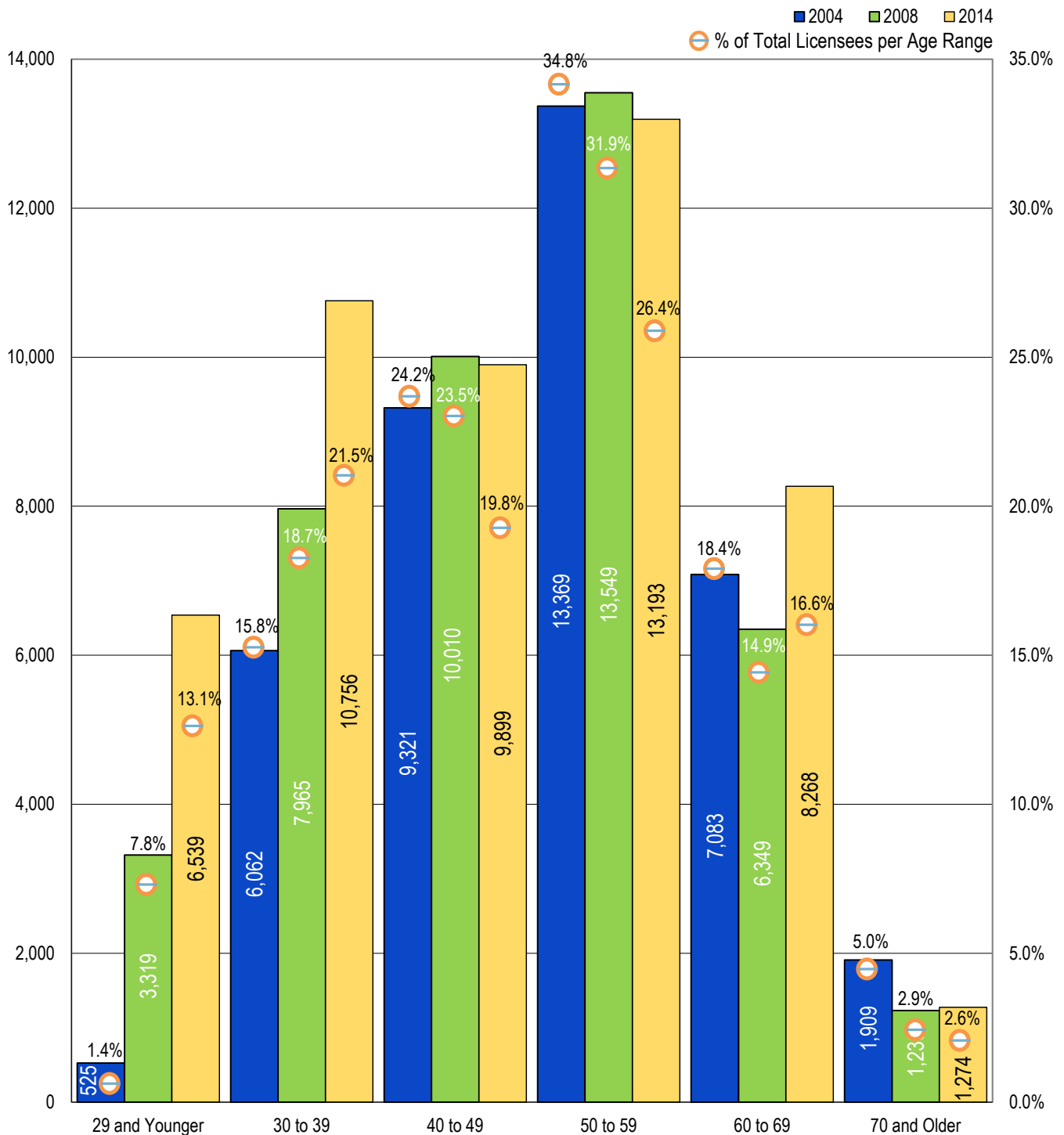
The following chart illustrates the total number of RN licensees by age range and also gives the percentage of total licensees by age range. There has been a steady increase in the number of licensees aged 39 and under with 34.6 percent of all RN licensees within this age group.

There was a slight decrease in licensees aged 40

to 59; however, nearly half (46.2%) of all RN licensees fall within this age group. In 2014, the largest cohort of RNs remains within the 50 to 59 year age range (26.4%).

Age data is compared every two years. For the purposes of this illustration, three of the last 11 years of information are displayed.

FIGURE 3: Number and Percentage of RN Licensees by Age Range (2004, 2008, & 2014)



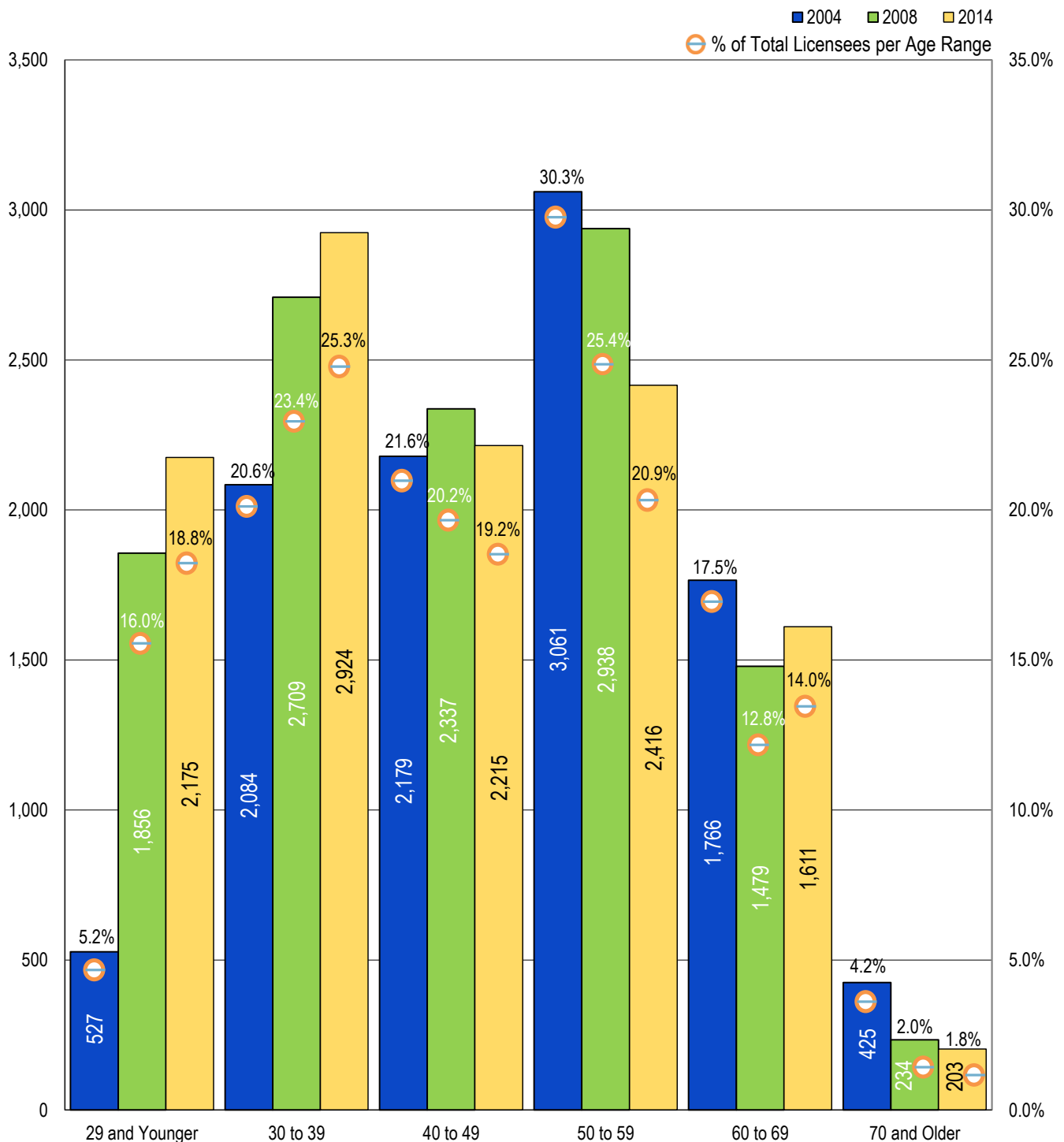
The chart below shows the total number of LPN licensees by age range and also gives the percentage of total licensees by age range.

A significant increase in the number of LPN licensees aged 39 and under has resulted in approximately 44.1 percent of all licensees falling within this age group. This outpaces the 40 to 59 age group which makes up 40.1 percent of all LPN licensees.

In 2014, the largest cohort of LPNs was within the 30 to 39 year age range (25.3%).

Age data is compared every two years. For the purposes of this illustration, three of the last 11 years of information are displayed.

FIGURE 4: Number and Percentage of LPN Licensees by Age Range (2004, 2008, & 2014)



EDUCATION OF LICENSEES

The following chart illustrates the total number of active licensees and the original RN graduate award level.

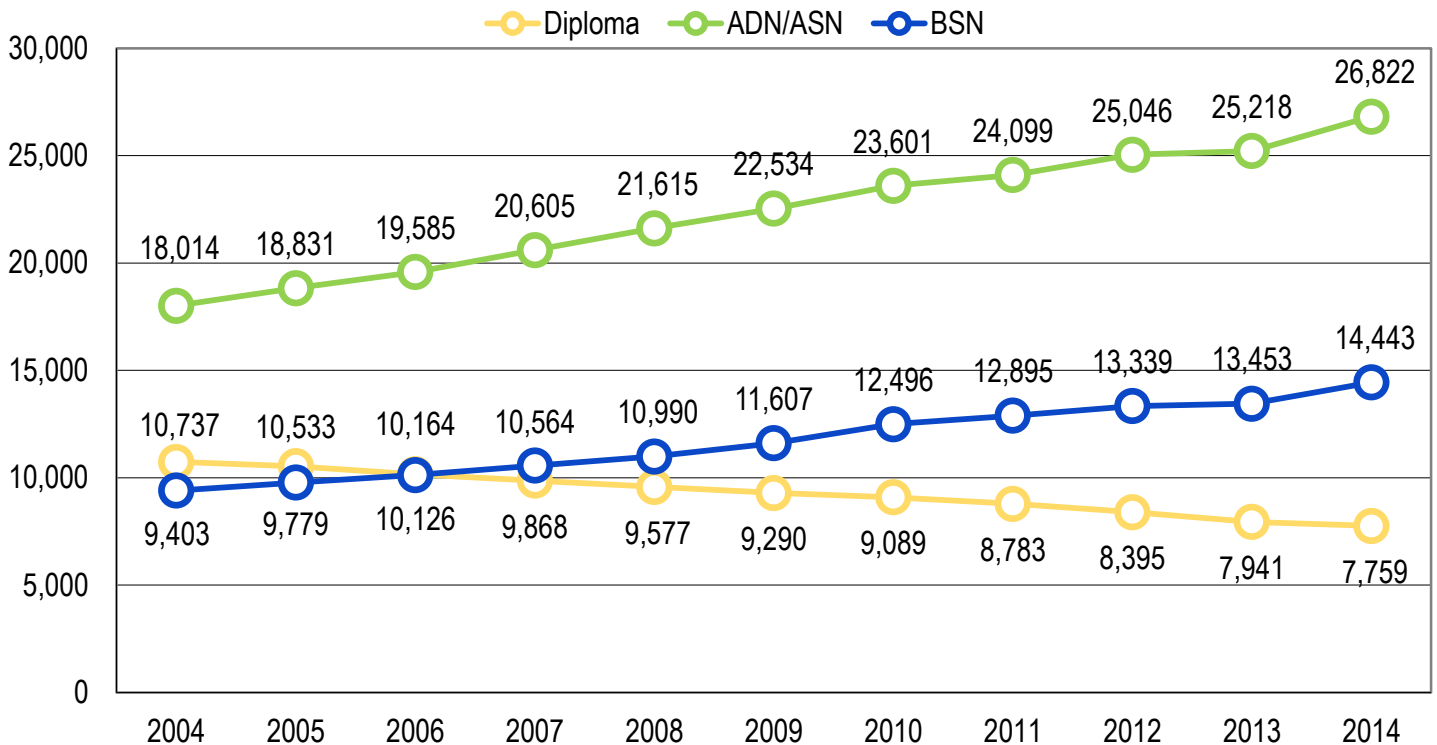
Diploma programs were nursing programs associated with a hospital or medical facility. Diploma numbers continue to decline following the closing of the last Iowa diploma program in 1999.

The number of Associate Degree in Nursing/ Associate of Science in Nursing (ADN/ASN) graduates and Bachelor of Science in Nursing (BSN) graduates has been on the rise. Yet, the

total number of graduates from ADN/ASN programs continues to significantly outpace the number who earn a BSN degree upon original licensure.

Since 2004, however, the number of ADN/ASNs awarded has increased by 48.9 percent while the number of 4-year degrees earned has increased by 53.6 percent.

FIGURE 5: Basic RN Education, Graduates by Award Level (2004-2014)



BSN graduates have increased
AT A RATE NEARLY 5%
GREATER THAN ADN/ASN graduates
 (2004 - 2014)

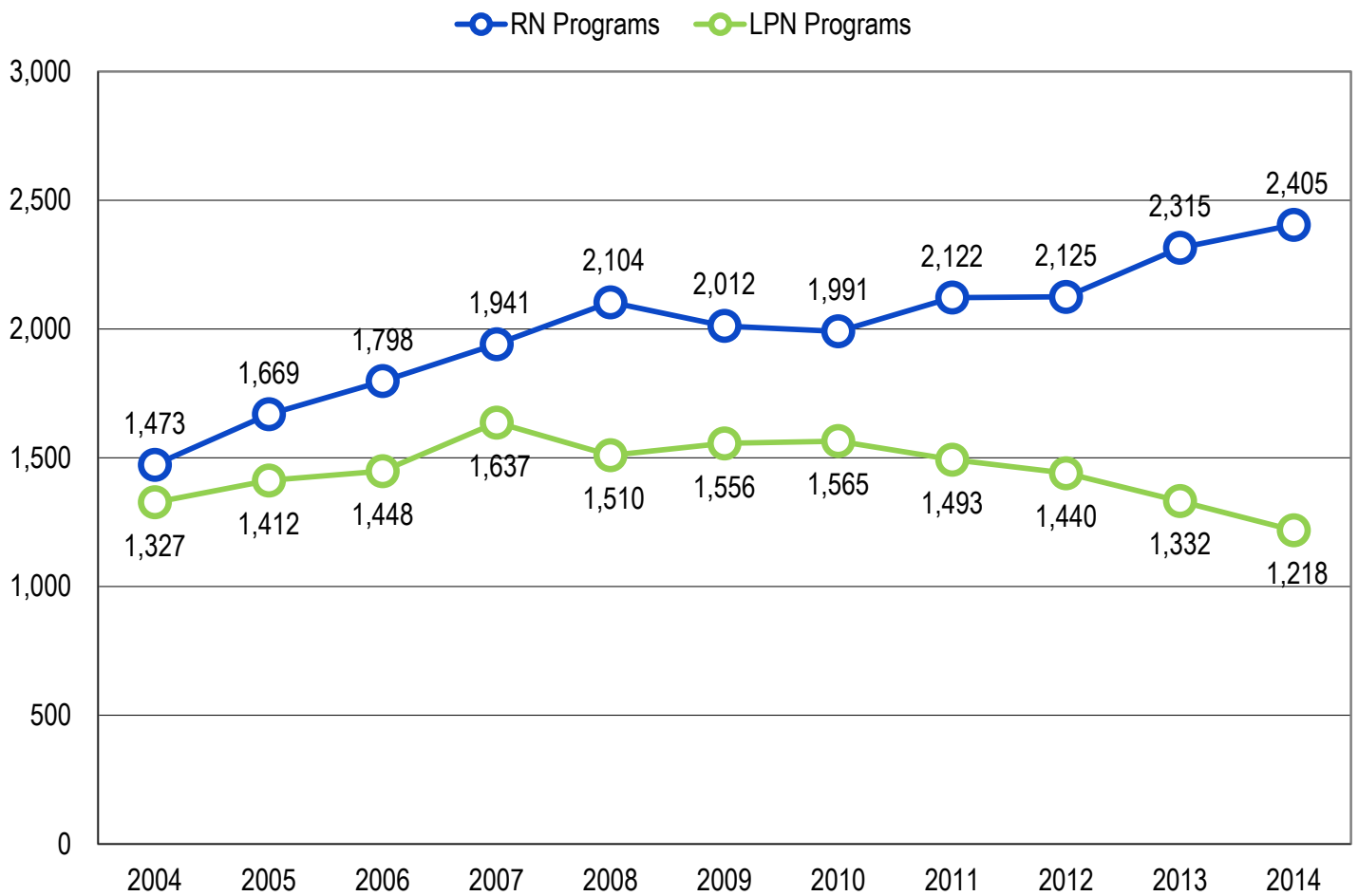
The chart below shows the number of graduates with Iowa's **pre-licensure** nursing programs.

The number of RN graduates increased steadily between 2004 and 2008 and then again between 2011 and 2014. In 2014, RN pre-licensure program graduates reached 2,405—the highest level reached in Iowa's history and a 3.9 percent increase over the previous year.

Since 2010, the number of LPN graduates has steadily declined. In 2014, the total number of graduates was 1,218 a percentage decrease of 8.6 percent from prior year.

Note: Most nursing education programs at Iowa community colleges are built on a career ladder concept that prepares graduates to apply for LPN licensure upon completion of the first level (year) and RN licensure upon completion of the second level (year).

FIGURE 6: Graduates of Iowa Nursing Education Pre-Licensure Programs (2004-2014)*



*Data collection for RN programs has been modified. Numbers reported here have been revised and may not match data reported previously.

{ In 2014, the total number of RN pre-licensure graduates
REACHED 2,405 THE **HIGHEST** IN IOWA HISTORY }

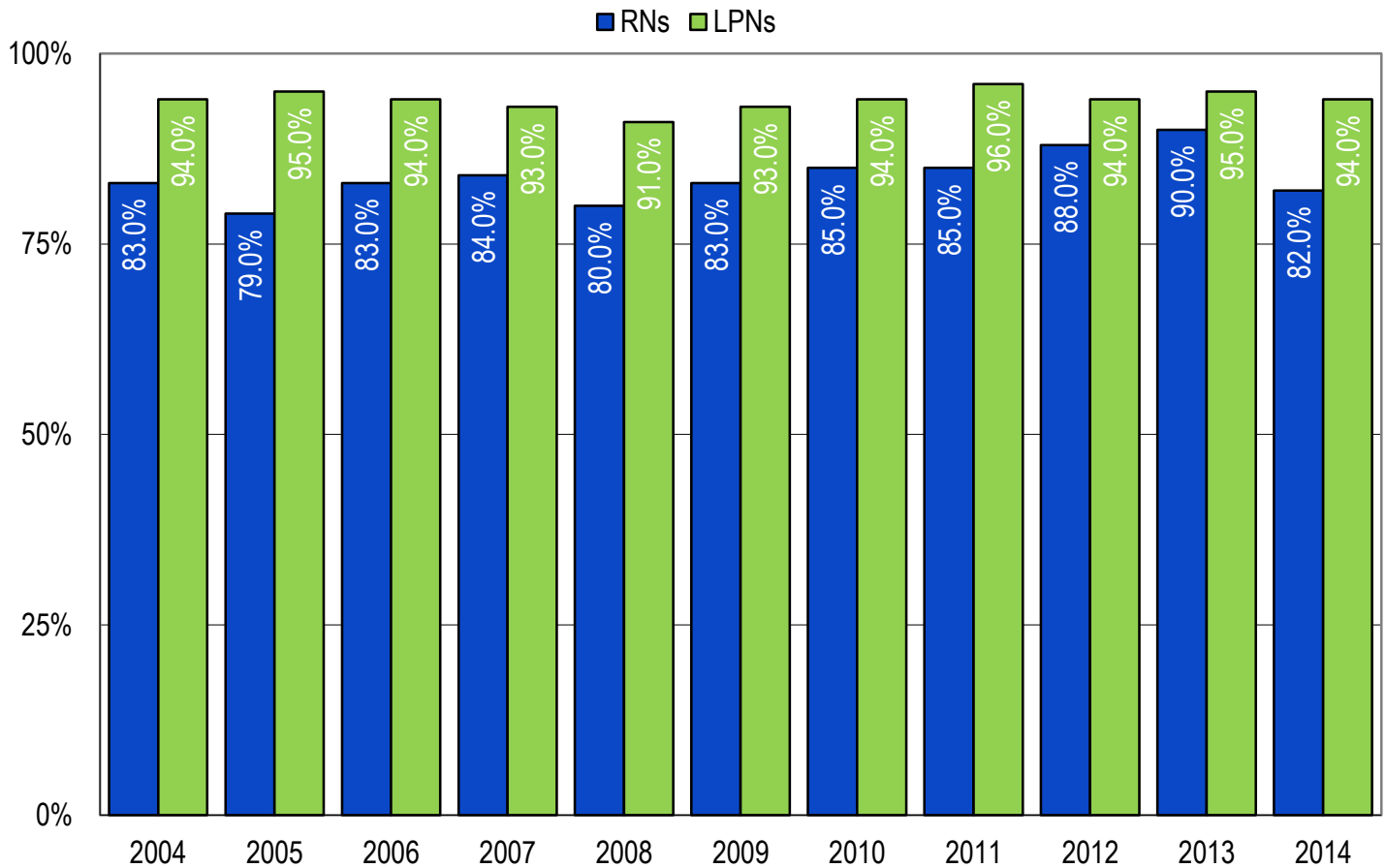
The following chart depicts the pass rates among graduates of Iowa's nursing programs taking the national licensure examination for the first time.

Note: The State Board Test Pool Examination (SBTPE) was provided from 1946-1982. The National Council Licensure Examination (NCLEX®) has been provided from 1982-present. After 1988, NCLEX® results were reported as pass/fail. The examination was converted to computerized adaptive testing (CAT) in April 1994.

Throughout the 2004-2014 time period the pass rate among LPNs never dipped below 91.0 percent.

The average pass rate among RNs during the same time period was 83.8 percent.

FIGURE 7: First-Time Tester Passing Rates Among Graduates of Iowa Nursing Programs, National Licensure Examination (2004-2014)



FROM 2004 TO 2014

THE PASS RATE FOR FIRST-TIME TEST-TAKERS AMONG LPNS

NEVER FELL BELOW 91%

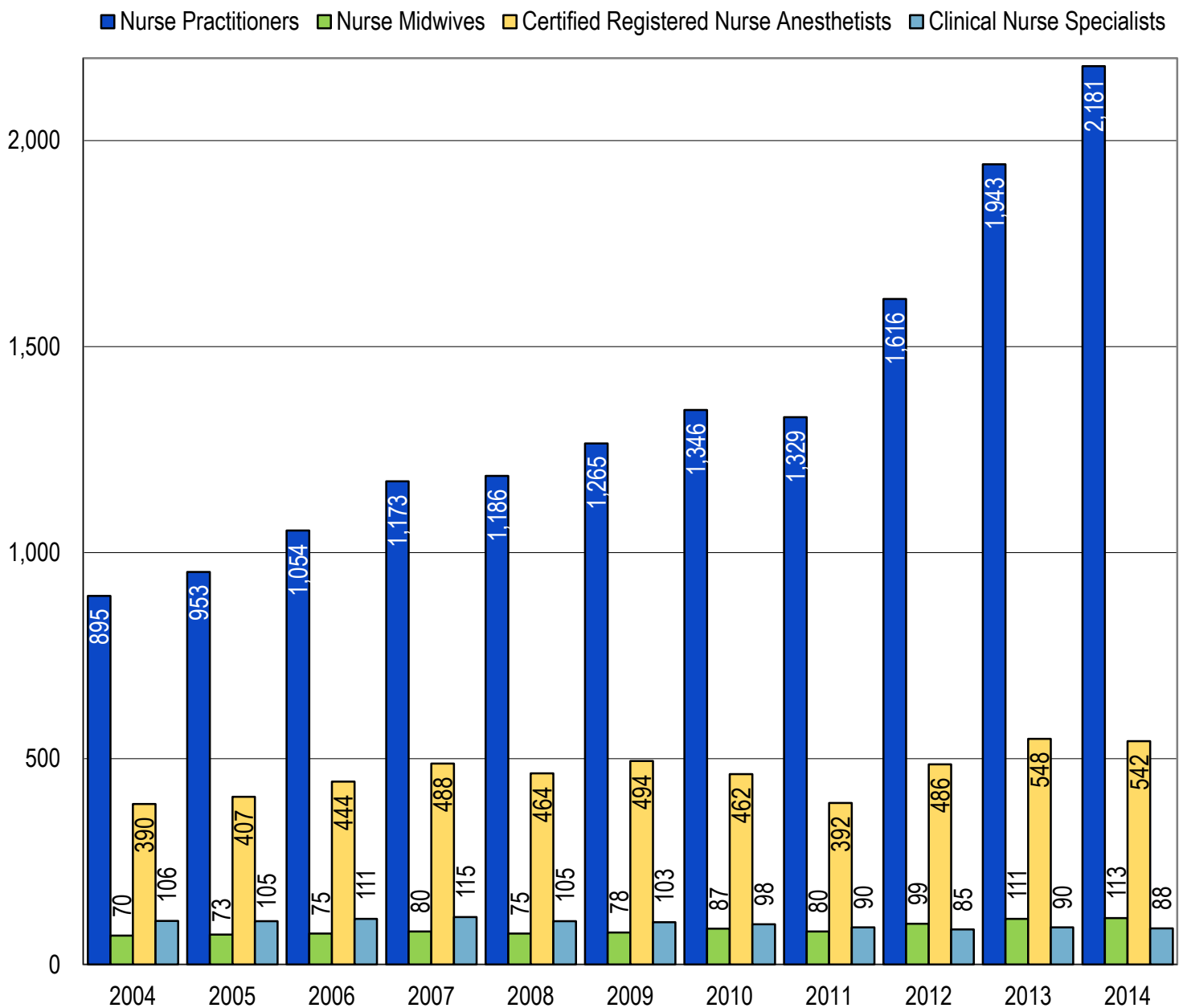
The following chart illustrates the number of Advanced Registered Nurse Practitioners (ARNPs) in Iowa.

Overall, the total number of ARNPs has more than doubled since 2004. The most significant change among ARNPs within the last year was the Nurse Practitioner category which experienced an increase of 238 licenses (2013-2014).

Both Certified Registered Nurse Anesthetists and Clinical Nurse Specialists experienced a slight decrease during this same one-year period (-6 and -2, respectively).

Between 2013 and 2014, the total number of ARNPs increased by 8.6 percent.

FIGURE 8: Advanced Registered Nurse Practitioners in Iowa (2004-2014)



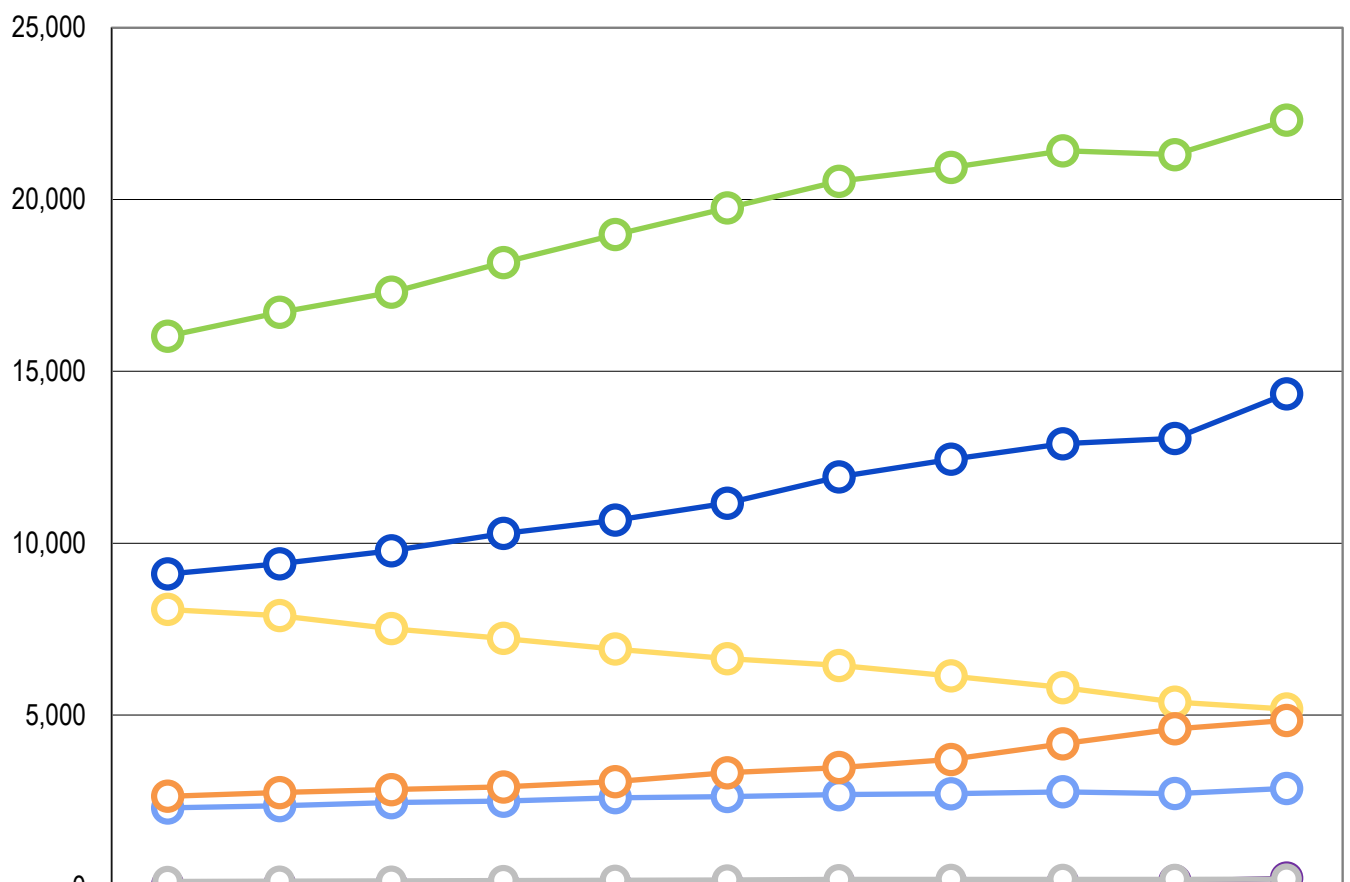
The following chart identifies the highest degree held by active licensed RNs. All degree categories identified by RNs experienced an overall increase since 2004 with the exception of diplomas which is a reflection of the absence of diploma nursing programs in Iowa.

There was a 25.0 percent increase between 2013 and 2014 for RNs who reported a doctorate as their highest degree. During this same time period, there was a 51.8 percent increase in RNs who specifically reported a doctoral level in nursing as their highest degree.

In addition, there was an increase of 10.0 percent during 2013-2014 timeframe among RNs who reported a BSN as their highest degree level and a 9.2 percent increase in baccalaureate degrees, overall.

In 2014, nearly half (45.1%) of total RN licensees reported a highest degree level of either a baccalaureate or higher.

FIGURE 9: Highest Degree Held by Active Licensed RNs (2004-2014)



	2004	2005	2006	2007	2008	2009	2010	2011	2012	2013	2014
Diploma	8,073	7,892	7,517	7,232	6,924	6,642	6,443	6,141	5,801	5,379	5,175
ADN/ASN	16,026	16,718	17,301	18,165	18,978	19,751	20,529	20,929	21,415	21,305	22,308
BSN	9,107	9,403	9,781	10,283	10,671	11,168	11,932	12,442	12,893	13,050	14,350
Other Baccalaureate	2,298	2,366	2,456	2,499	2,596	2,630	2,687	2,711	2,769	2,719	2,868
Masters	2,639	2,747	2,832	2,912	3,065	3,323	3,472	3,710	4,167	4,599	4,844
*Doctoral in Nursing	61	58	57	57	67	79	93	100	116	170	258
Other Doctorate	163	171	177	191	199	208	220	224	224	222	232

*For 2014, of the 258 doctoral in nursing degrees reported: 106 are Doctor of Nursing Practice (DNP) degrees, 82 are other doctoral nursing degrees, and 70 are PhDs in nursing.

NURSING EDUCATION

NURSING EDUCATION PROGRAMS

For the purposes of this report, nursing programs are listed separately by site and type. In some instances, more than one site may share administration by a single program, a common philosophy, curriculum and faculty.

Since 2007, the total number of nursing programs offered in Iowa has increased by 5. From 2007 to 2014, available DNP programs has seen the greatest increase, among all program levels, with a total of 6 programs being added.

The second largest growth was in the ADN/ASN programs.

Professional master's and Clinical Nurse Leader (CNL) master's (pre-licensure) programs were discontinued in 2010.

FIGURE 10: Number of Nursing Education Programs by Type (2007-2014)*

Program	2007	2008	2009	2010	2011	2012	2013	2014
PhD in Nursing	1	1	1	1	1	1	1	1
DNP	0	1	1	1	3	4	4	6
Post-Master's	5	5	5	5	5	6	6	5
Master's	6	6	7	8	9	9	9	8
Professional Master's/ CNL (Pre-Licensure) Master's	1	1	1	1	0	0	0	0
BSN	18	18	19	19	18	19	19	20
ADN/ASN	33	34	35	35	31	36	36	36
Practical Nursing	38	38	37	37	33	34	34	31
**Diploma	0	0	0	0	0	0	0	0
Total	102	104	106	107	100	109	109	107

*Data collection for nursing programs has been modified. Numbers reported here have been revised and may not match data reported previously.

**The last diploma program in Iowa closed in 1999.

{ IN 2007, IOWA DID NOT OFFER ANY
 DOCTOR OF NURSING PRACTICE (DNP) PROGRAMS
 IN 2014, THERE WERE 6. }

ADMISSIONS DATA

Admission data is based on the number of students who have met program admission requirements and are taking nursing courses the first day classes meet for the reporting year.

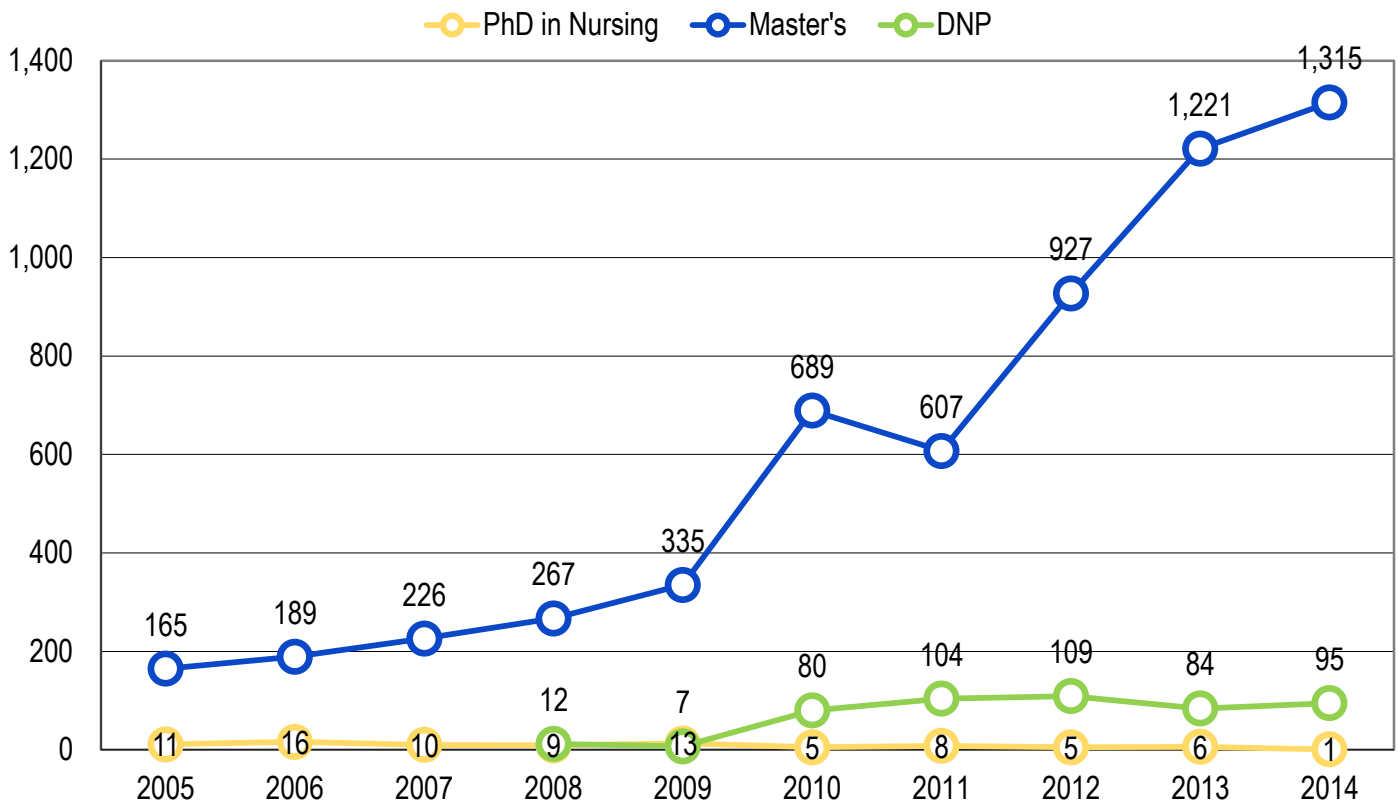
The following chart provides the total number of admissions per school year within graduate nursing programs in Iowa.

During the 2014 school year 96 students were admitted into Iowa's doctoral programs.

For the same school year 1,315 students were admitted into a master's program. This represents a 7.7 percent increase over the prior year.

Between 2009 and 2011, two additional master's programs became available in Iowa. This may account for the significant increase in admissions within this program type during this period of time (Figure 10).

FIGURE 11: Admission Totals for Graduate Nursing Programs (2004-2014)



From 2011 to 2014 the number of students admitted into a master's program more than doubled.

This is due largely to the rise in online graduate programs.

In 2014, graduate programs in nursing reported 127 students on waiting lists (104 for master's and 23 for doctoral-DNP).

From 2011 to 2014
MASTER'S PROGRAM ADMISSIONS
 MORE THAN **DOUBLED**

The following chart provides the total number of admissions per school year within non-degree certificate nursing programs in Iowa.

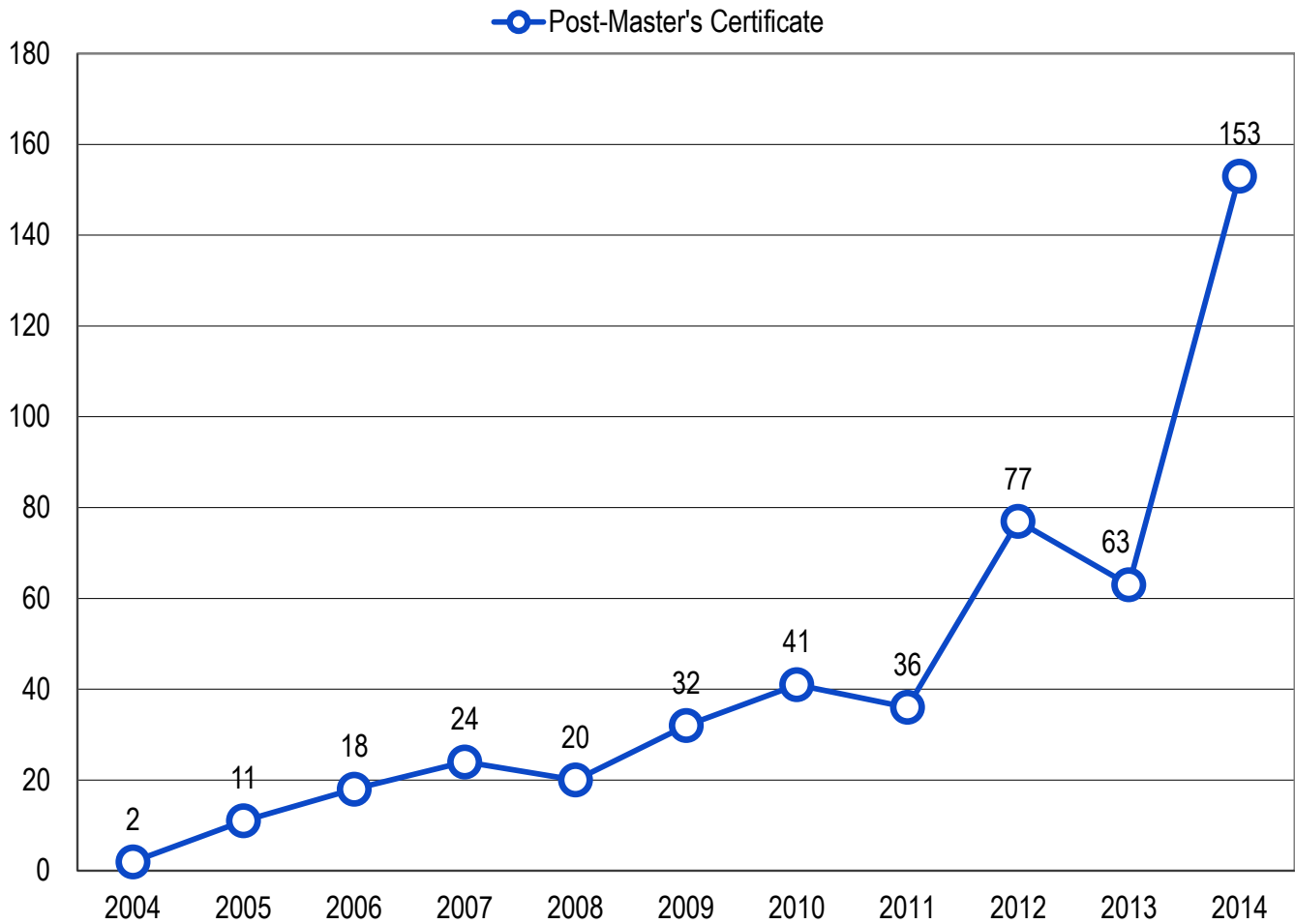
The post-master's certificate program is designed for master's prepared nurses pursuing advanced practice certification in a specialty area. The post-master's certificate provides additional knowledge, clinical experience and competency for master's prepared nurses who are seeking a role expansion or role change.

During the 2014 school year 153 students were admitted into Iowa's post-master's certificate programs. This is a significant increase over the prior year which saw only 63 admissions.

The addition of one online post-master's certificate program in 2012 may account for this spike in admissions.

In 2014, there were no students on waiting lists for post-master's certificate programs.

FIGURE 12: Admission Totals for Non-Degree Nursing Programs (2004-2014)*



*No data available for non-degree certificate programs other than the post-master's certificate

From 2013 to 2014
POST-MASTER'S CERTIFICATE
 ADMISSIONS GREW BY **143%**

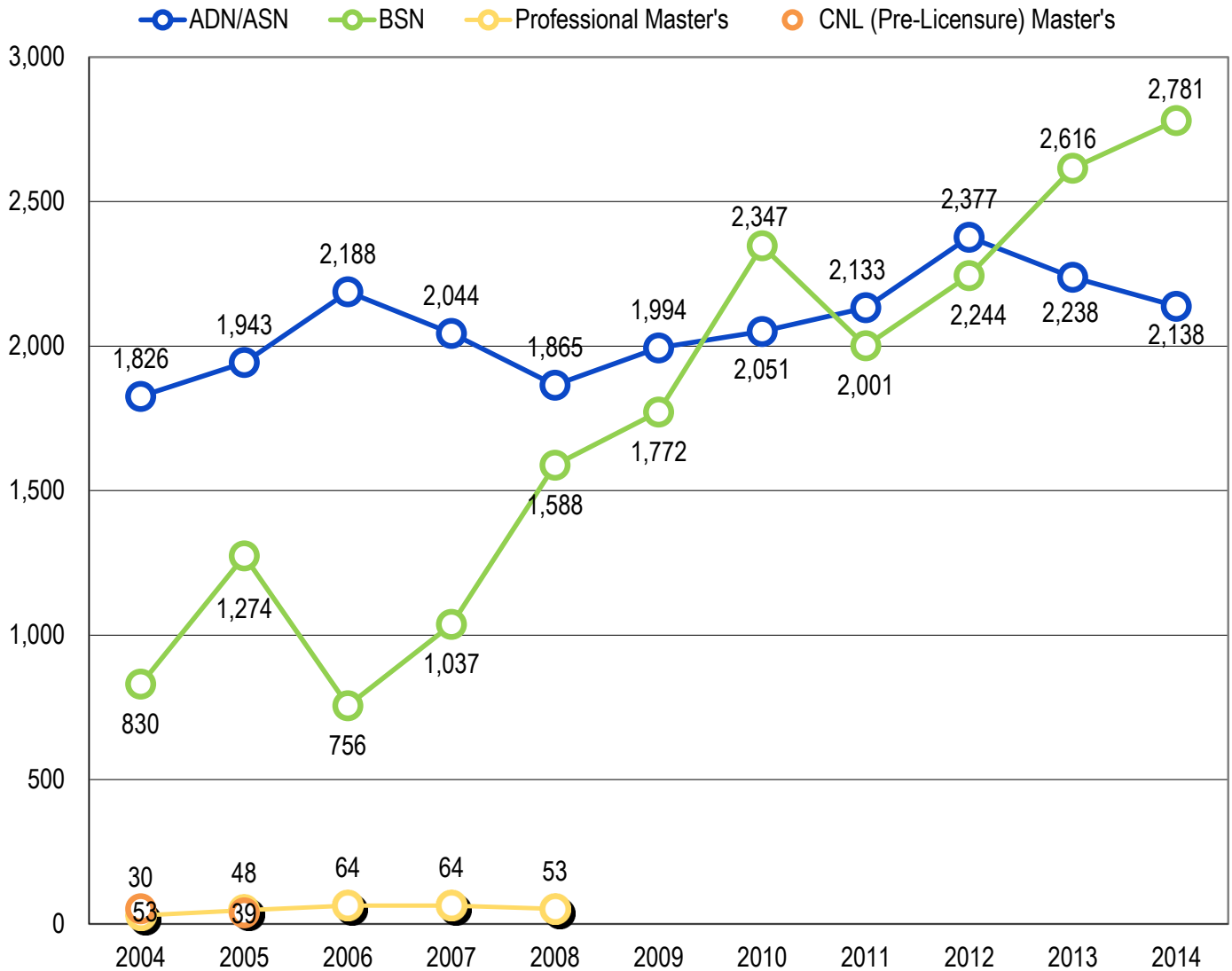
The chart below shows the total number of admissions per school year within pre-licensure and RN nursing programs in Iowa.

During the 2014 school year 4,919 students were admitted into Iowa's pre-licensure and RN programs. This represents an increase of 1.3

percent over the 2013 school year and a 79.6 percent increase since 2004.

In 2014, the undergraduate RN programs including: ADN/ASN and BSN (pre-licensure) degrees had 221 students on waiting lists.

FIGURE 13: Admission Totals for Pre-Licensure and RN Nursing Programs (2004-2014)



The rise in BSN program admissions between 2006 and 2010 may be the result of enrollment increases in online RN to BSN programs.

RN & PRE-LICENSURE ADMISSIONS
 INCREASED NEARLY **80%**
 (2004 to 2014)

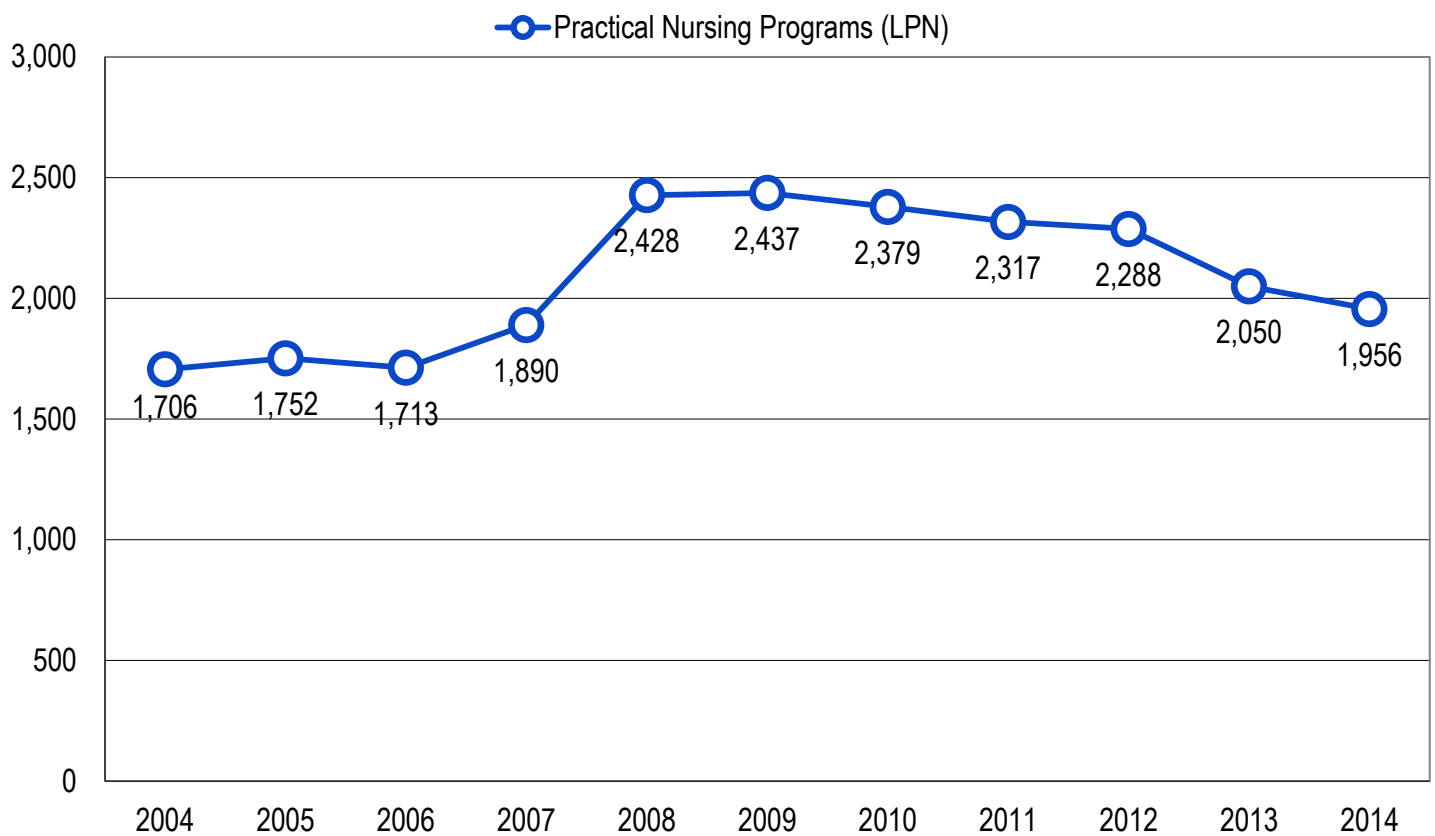
The following chart provides the total number of admissions per school year within practical nursing programs in Iowa.

During the 2014 school year 1,956 students were admitted into Iowa's LPN programs. This is a 4.6 percent decrease over the prior year which saw 2,050 admissions.

In 2014, LPN programs reported 86 students on waiting lists, down from 171, one year ago.

Note: In 2014, 81.0 percent of practical nursing graduates proceeded directly to RN programs.

FIGURE 14: Admission Totals for Practical Nursing Programs (2004-2014)



From 2008 to 2014
PRACTICAL NURSING PROGRAM
 ADMISSIONS FELL BY OVER **19%**

ENROLLMENT DATA

Enrollment data is based on the number of students who have met admission requirements, are accepted into the nursing program, and are taking the nursing courses as of October 15th of the reporting year.

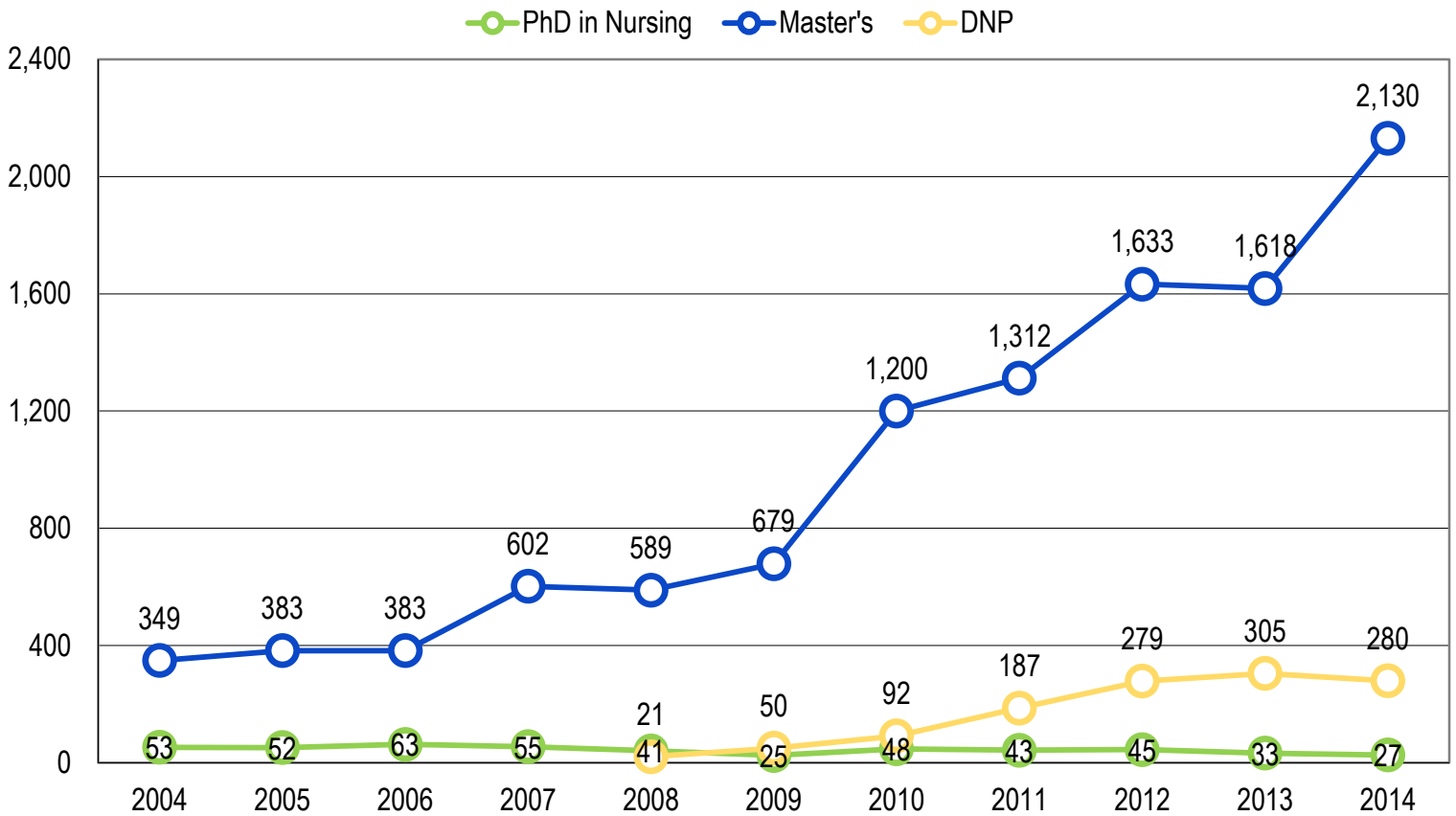
The following chart provides the total number of enrollments per school year within graduate nursing programs in Iowa.

During the 2014 school year 307 students were enrolled in Iowa's doctoral programs, a decrease of 9.2 percent compared to 2013.

For the 2014 school year 2,130 students were enrolled in a master's program. This represents a 31.6 percent increase over the prior year.

Between 2009 and 2011, two additional master's programs became available in Iowa. This may account for the significant increase in enrollment within this program type during this period of time (Figure 10).

FIGURE 15: Enrollment Totals for Graduate Nursing Programs (2004-2014)



From 2013 to 2014
GRADUATE PROGRAM ENROLLMENT
 GREW BY **32%**

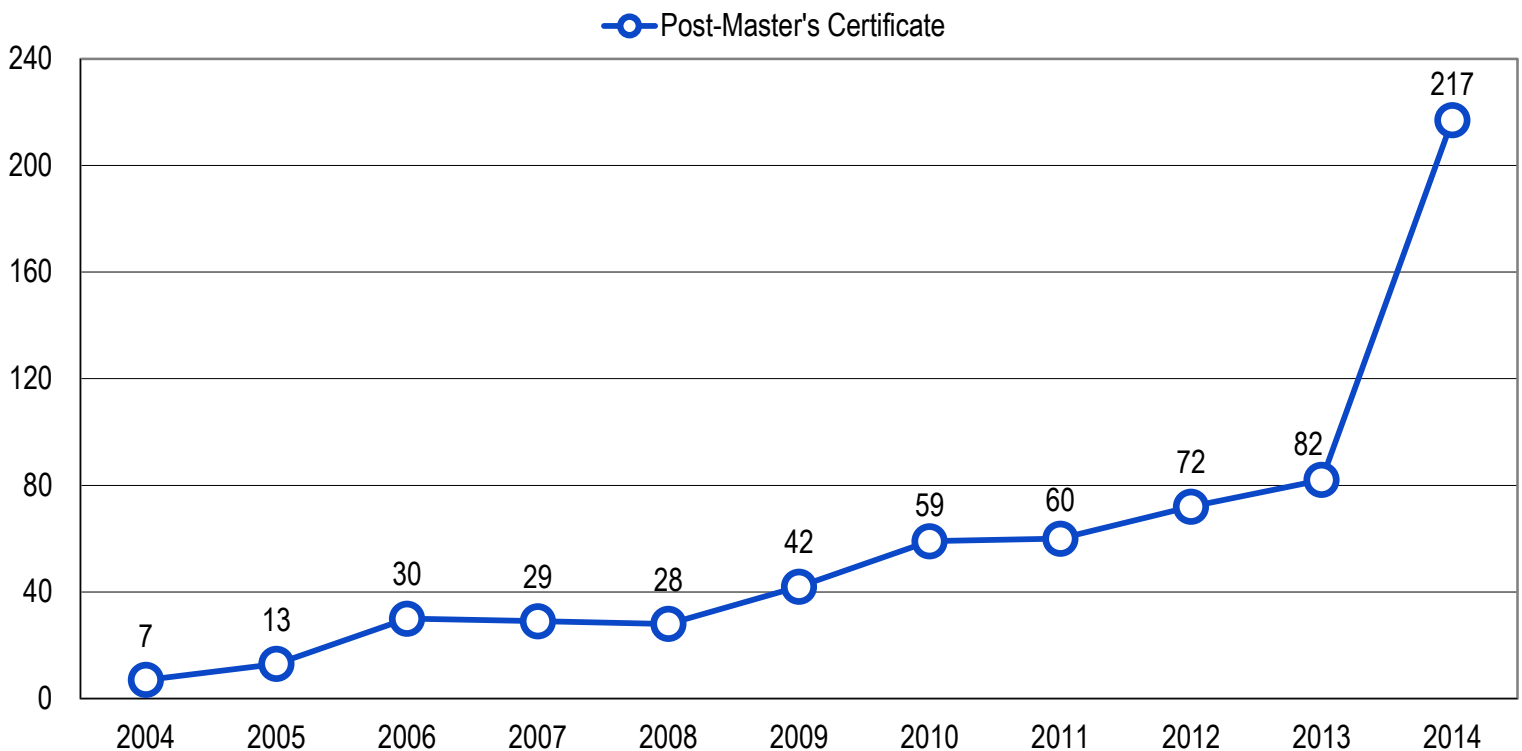
The following chart provides the total enrollment level per school year within post-master's certificate nursing programs in Iowa.

During the 2014 school year 217 students were enrolled in Iowa's post-master's certificate programs. This is an increase of 164.6 percent

increase over the prior year which had a total enrollment of 82.

The addition of one online post-master's certificate program in 2012 may account for this spike in enrollment. Of the 217 enrolled, 143 students were in an online program

FIGURE 16: Enrollment Totals for Post-Master's Certificate Nursing Programs (2004-2014)



From 2013 to 2014
POST-MASTER'S CERTIFICATE
 ENROLLMENT GREW BY **165%**

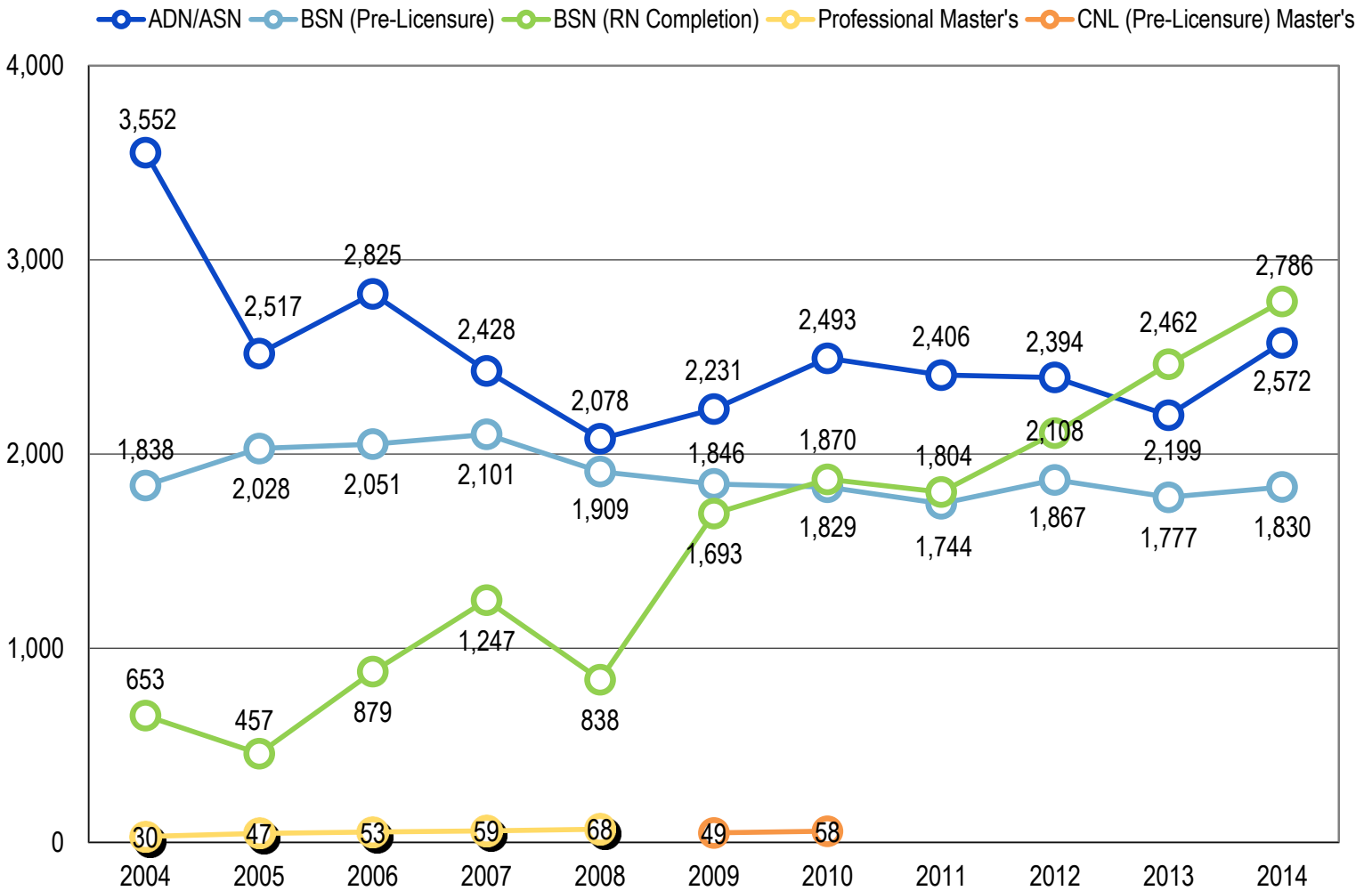
The chart below shows the total enrollment per school year within RN nursing programs in Iowa.

ADN/ASN degree enrollment has dropped off significantly from the 2004 level of 3,552.

During the 2014 school year 7,188 students were enrolled in Iowa's RN programs. This represents an 11.6 percent increase over the 2013 school year and an 18.4 percent increase since 2004.

However, enrollment within BSN (RN completion) programs has experienced steady growth since 2009. From 2009 to 2014 enrollment within these programs has grown by 64.6 percent.

FIGURE 17: Enrollment Totals for Pre-Licensure and RN Nursing Programs (2004-2014)



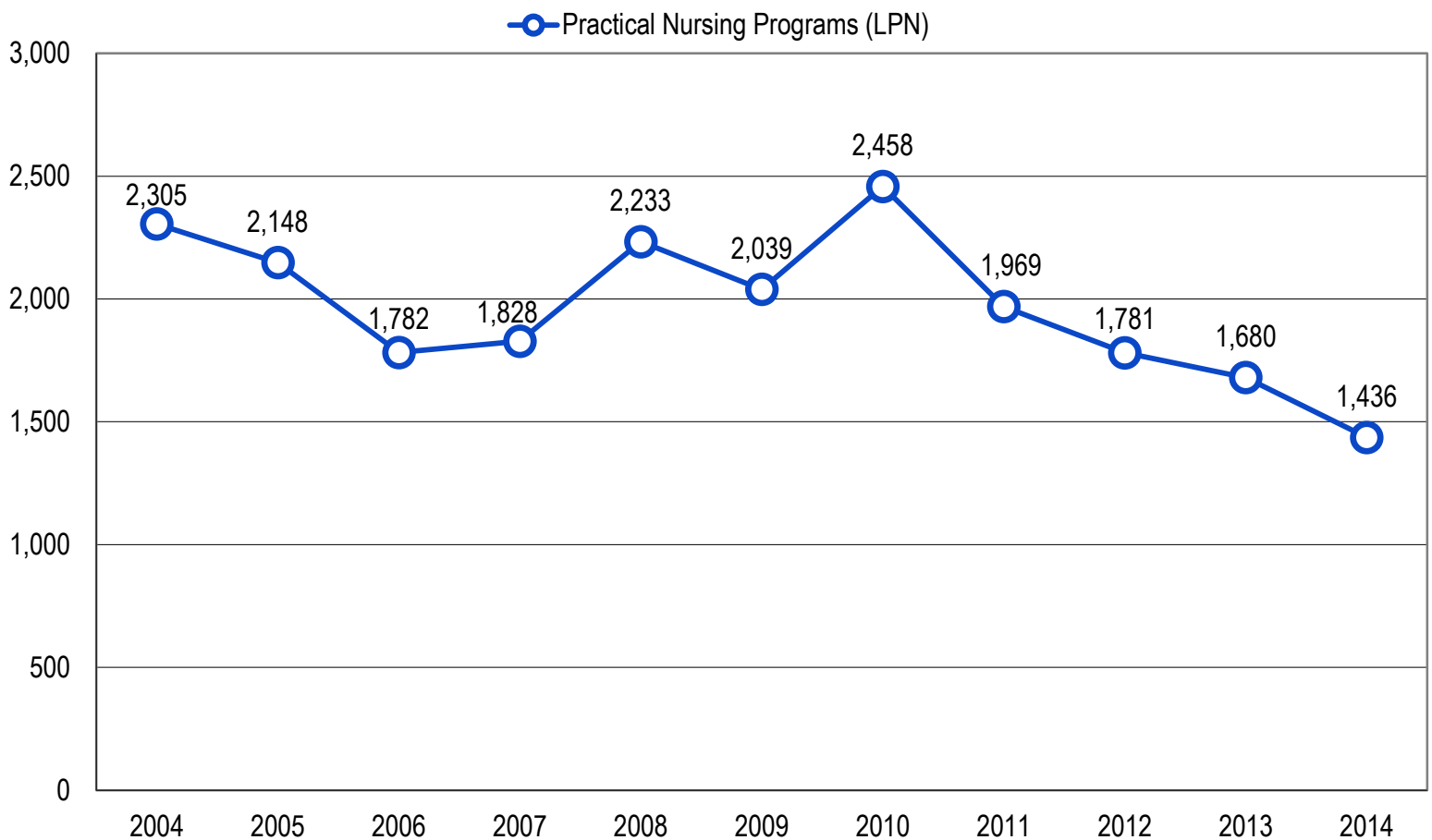
{ RN NURSING PROGRAM ENROLLMENT }
 INCREASED BY **18%**
 (2004 to 2014)

The following chart provides the enrollment levels per school year within practical nursing programs in Iowa.

Enrollment in LPN programs in Iowa has trended downward for the last four years. From 2010 to 2014 there has been a 41.6 percent decline in LPN program enrollment.

In 2014, 1,436 students were enrolled in Iowa's LPN programs. This is a 14.5 percent decrease over the prior year which had an enrollment of 1,680.

FIGURE 18: Enrollment Totals for Practical Nursing Programs (2004-2014)



From 2004 to 2014
PRACTICAL NURSING PROGRAM
 ENROLLMENT DECLINED **38%**

GRADUATION DATA

Graduation data is based on the number of students who have successfully completed the requirements of a nursing program, earned a degree in nursing, and were assigned a graduation date between August 1st and July 31st of the reporting year.

The following chart provides the total number of graduates per school year from graduate nursing programs in Iowa.

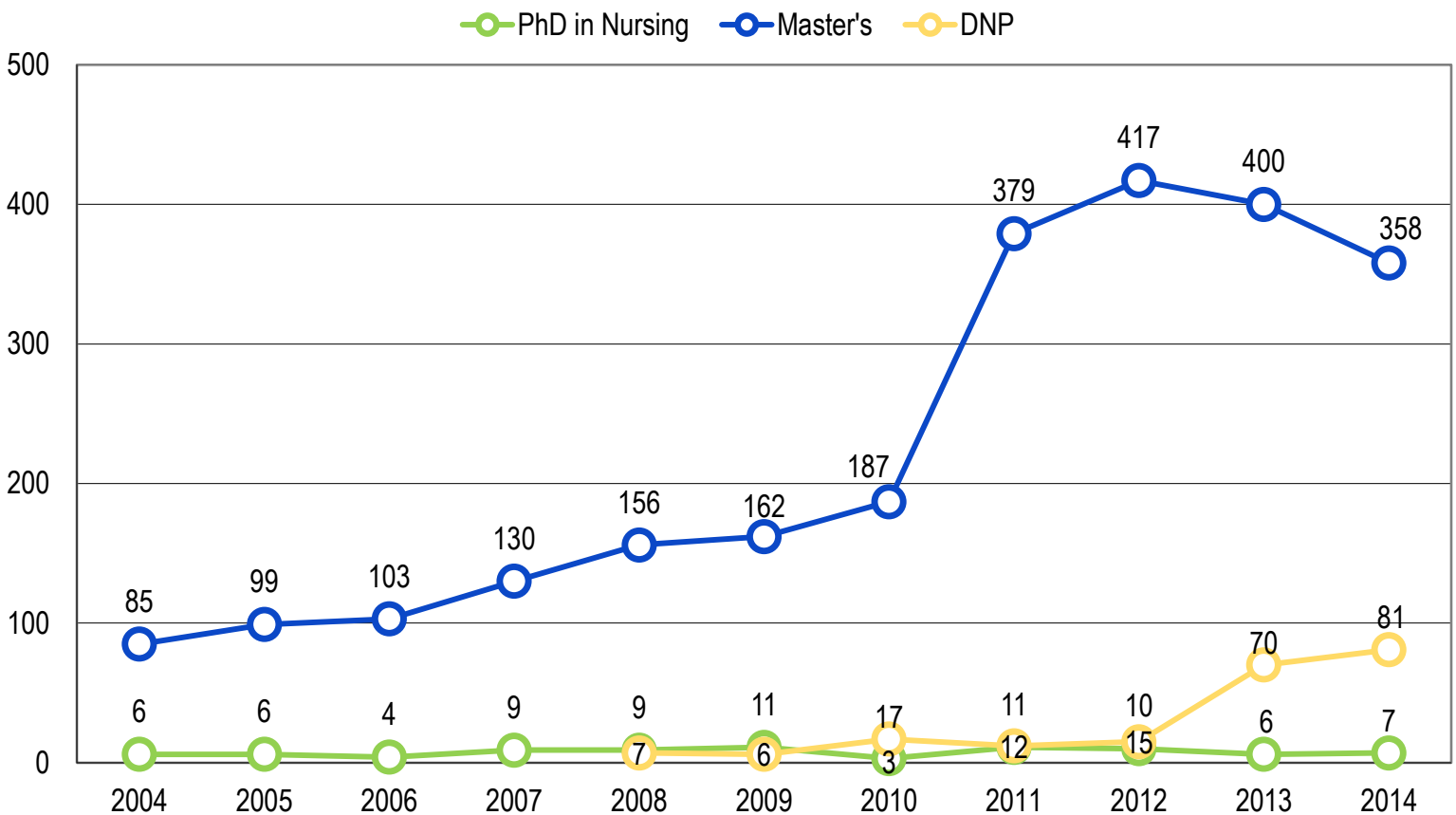
During the 2014 school year 88 students graduated from Iowa's doctoral programs, an increase of 15.8 percent compared to 2013. A total

of 232 students have graduated from doctoral programs since 2010.

For the 2014 school year 358 students graduated from a master's program. This represents a 14.1 percent decrease since 2012.

Between 2009 and 2011, two additional master's programs became available in Iowa. This may account for the significant increase in graduation rates within this program type during this period of time (**Figure 10**).

FIGURE 19: Graduate Totals from Graduate Nursing Programs (2004-2014)



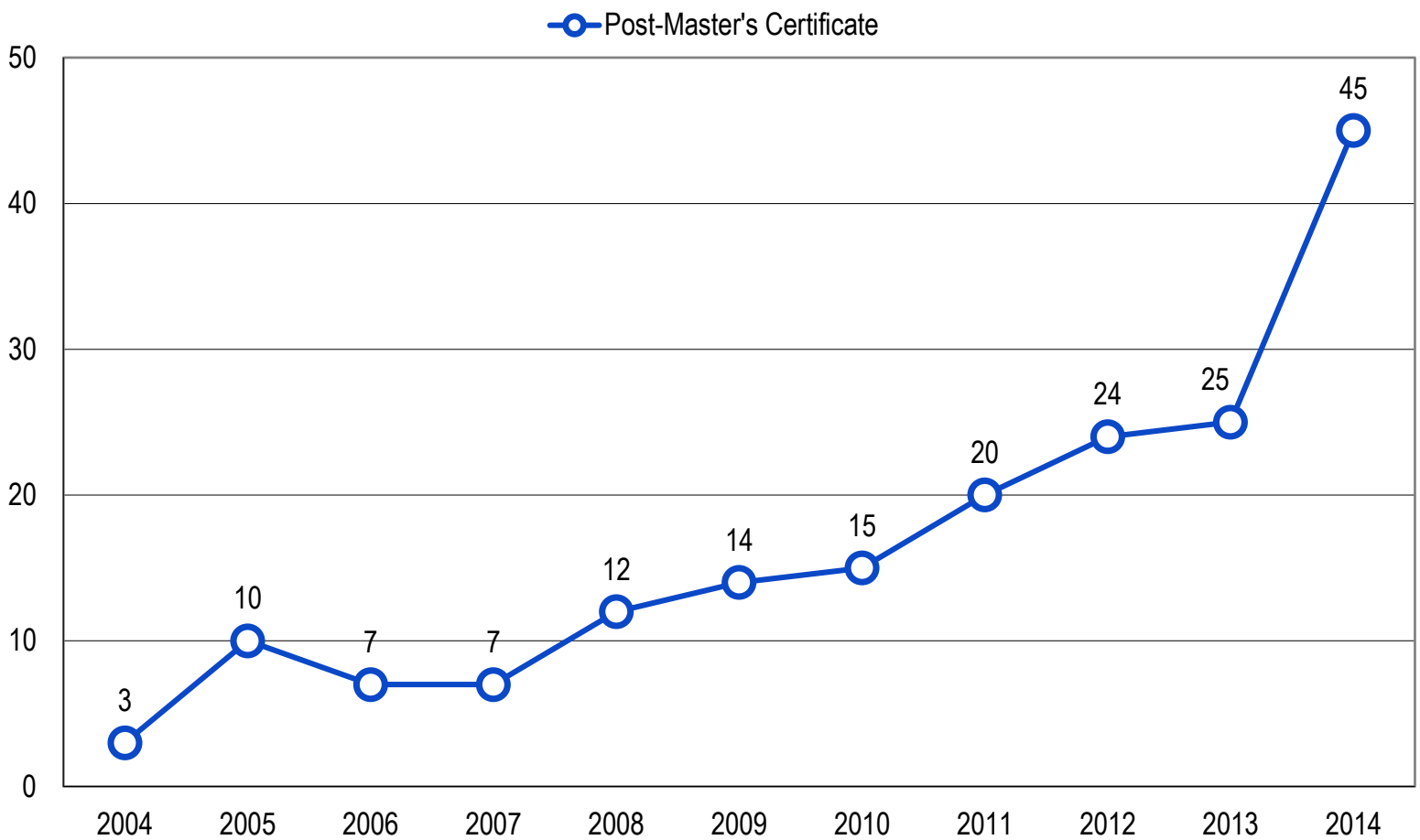
From 2013 to 2014
DOCTORAL PROGRAM GRADUATES
 GREW BY **16%**

The following chart provides the total number of graduates per school year from post-master's certificate nursing programs in Iowa.

During the 2014 school year 45 students graduated from Iowa's post-master's certificate programs. This is an 80.0 percent increase over the prior year which had only 25 graduates.

The addition of one online post-master's certificate program in 2012 may account for the spike in the graduation level for 2014. Enrollment and graduation numbers vary due to the length of programs, part-time or full-time student status, attrition, or extenuating circumstances for the students.

FIGURE 20: Graduate Totals from Post-Master's Certificate Nursing Programs (2004-2014)



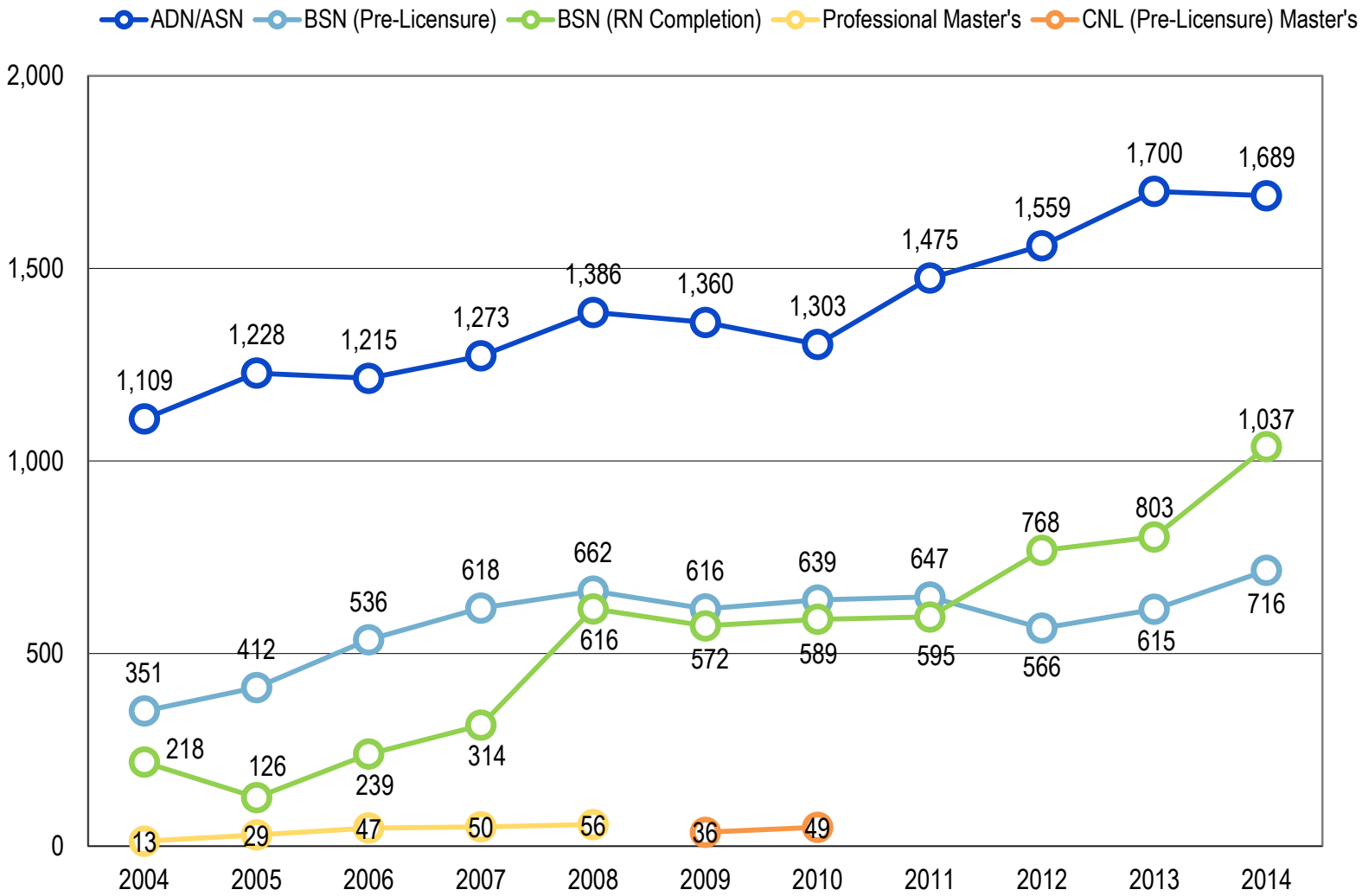
From 2013 to 2014
POST-MASTER'S CERTIFICATE
 PROGRAM GRADUATES **80%**
 GREW BY

The chart below shows the total graduates per school year from RN nursing programs in Iowa.

During the 2014 school year 3,442 students graduated from Iowa's RN programs. This represents a 10.4 percent increase over the 2013 school year and a 103.5 percent increase since 2004.

In 2014, for the first time in 11 years, the total graduates from the BSN programs combined (both RN completion and pre-licensure) outpaced the number of graduates from ADN/ASN degree programs.

FIGURE 21: Graduate Totals from Pre-Licensure and RN Nursing Programs (2004-2014)



BSN PROGRAM GRADS
 INCREASED BY **24%**
 (2013 to 2014)

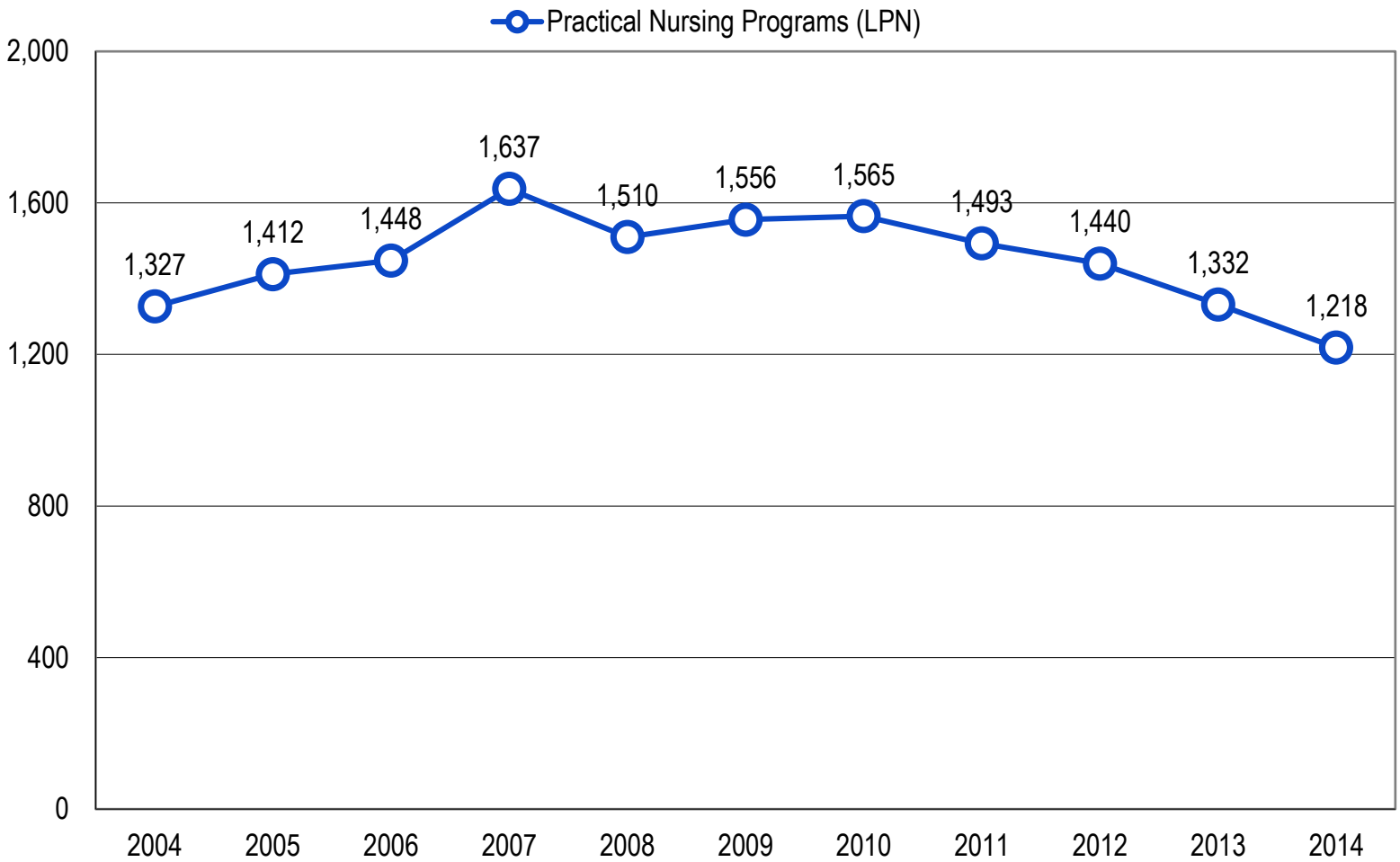
The following chart provides the graduate totals per school year from practical nursing programs in Iowa.

In 2014, 1,218 students graduated from Iowa's LPN programs. This is an 8.6 percent decrease over the prior year which had an enrollment of

1,332. Since 2004, there has been an overall decrease in total graduates of 8.2 percent.

Graduate levels in LPN programs in Iowa has trended downward for the last four years. This may be a reflection of the decrease in enrollment within Iowa's LPN programs.

FIGURE 22: Graduate Totals from Practical Nursing Programs (2004-2014)



From 2004 to 2014
PRACTICAL NURSING PROGRAM
 GRADUATES DECLINED BY **8%**

FACULTY DATA

The following chart presents the number of nursing program faculty in Iowa by age range.

In 2010, the total number of faculty between the ages of 35 and 44 was 288. In 2014, the total number grew to 325 an increase of 12.8 percent.

Conversely, in 2010, 330 faculty members were aged 45 to 54. This number fell to 266 in 2014, a decline of 19.4 percent.

Since 2010, the age distribution of faculty has become increasingly even among the age ranges. By 2014, 45.0 percent of faculty were 44 years old or younger and 55.0 percent were aged 45 years or older.

In 2014, the nursing programs in Iowa reported 70 total faculty vacancies (35 full-time, 4 part-time and 31 adjunct). In the next two years 73 faculty are expected to retire (39 full-time, 10 part-time and 24 adjunct).

FIGURE 23: Distribution of Faculty Members by Age Range (2010-2014)

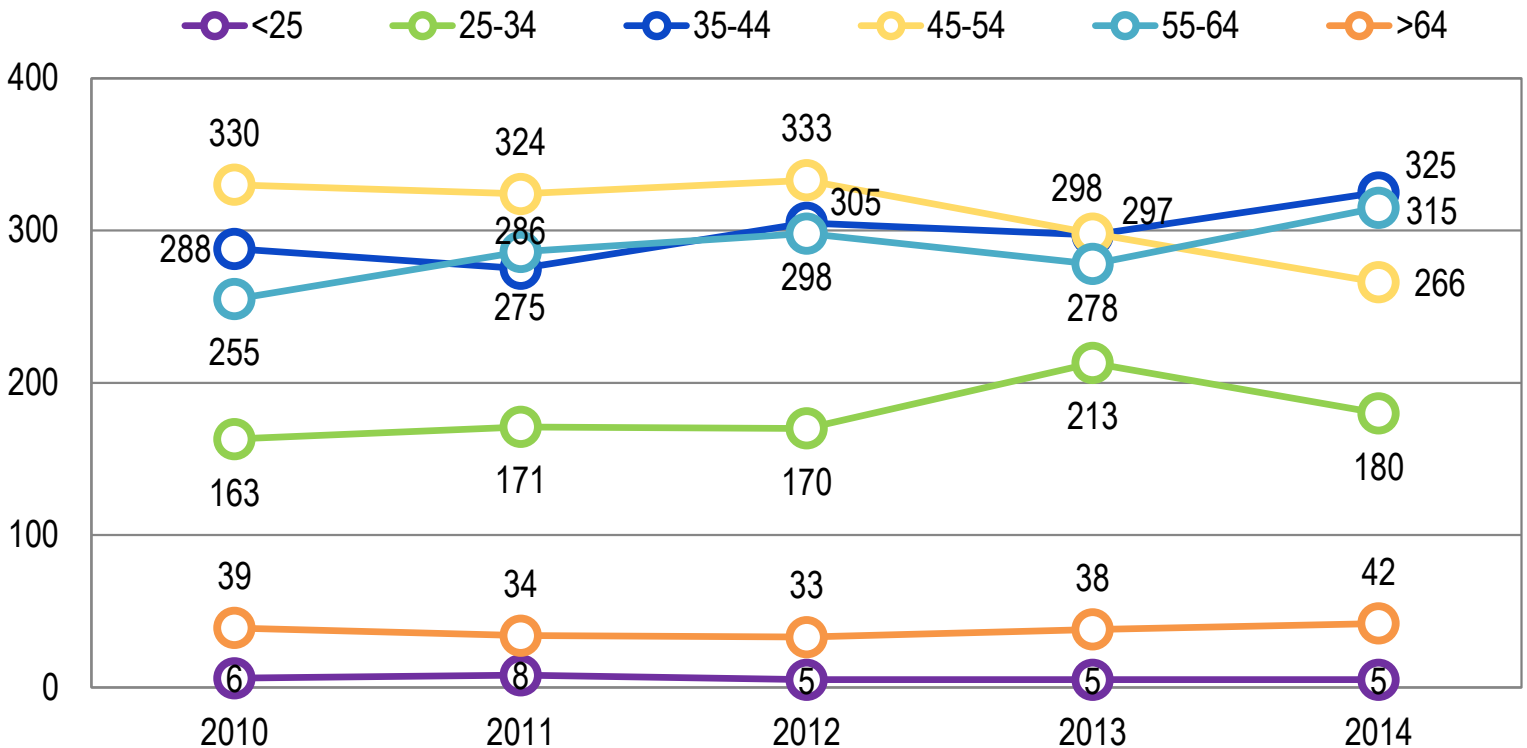
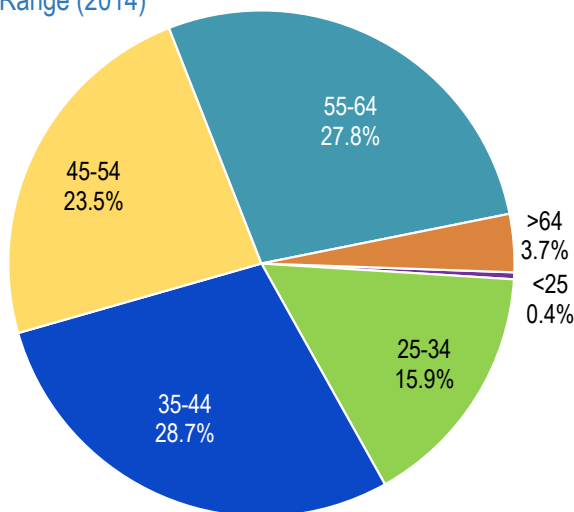


FIGURE 24: Distribution of Faculty Members by Age Range (2014)



Note: Nursing program faculty in Iowa are highly educated. In 2014, over two-thirds (71.1%) of all faculty members had a master's degree or higher. In addition, 25.3 percent had their baccalaureate.

Faculty members who teach nursing theory must hold a master's degree in nursing or an applicable field, or make progress toward such a degree.

73 FACULTY MEMBERS
ARE EXPECTED TO **RETIRE**
WITHIN THE NEXT 2 YEARS

CONCLUSION

The following table provides a comparison between the State of Iowa and the nation for various data points and provides the State with a benchmark for assessing its current position in regards to its nursing workforce. Iowa's nursing workforce is older than the nation (42.1%) with 45.6% of RNs over the age of 50. The LPN workforce is younger than the nation (37.5%) with 44.1% of LPNs age 39 and younger in Iowa.

The State of Iowa has a lower percentage (45.1%) of RNs with a baccalaureate degree or higher than the nation (61.0%). However, Iowa has a greater percentage (39.2%) of students enrolled in an RN-to-BSN nursing program than the nation (28.5%).

This report on the nursing supply in Iowa is a high level analysis of trends in workforce and available nursing education programs in Iowa as seen over the last 11 years.

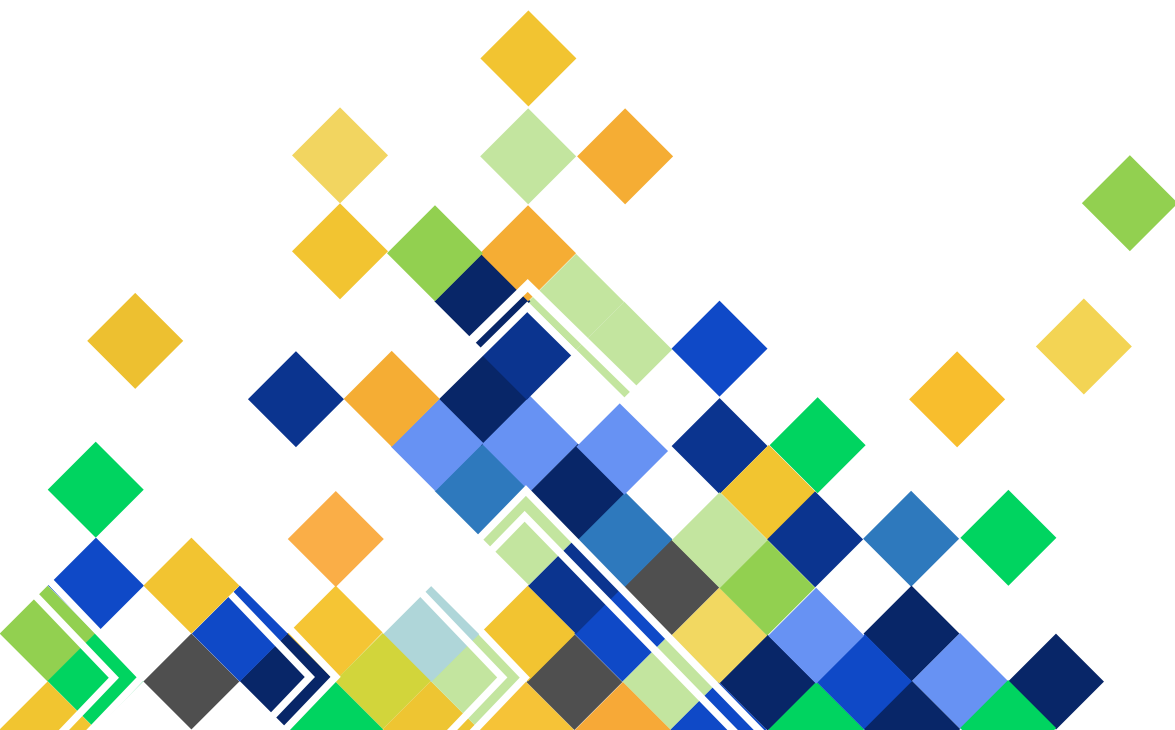
Factors to consider in conjunction with the data presented in this report include the changing landscape of healthcare in America and what supply and demand will look like in the future. Additional tracking will occur in future reports as supply information is gathered through the licensure process in this State.

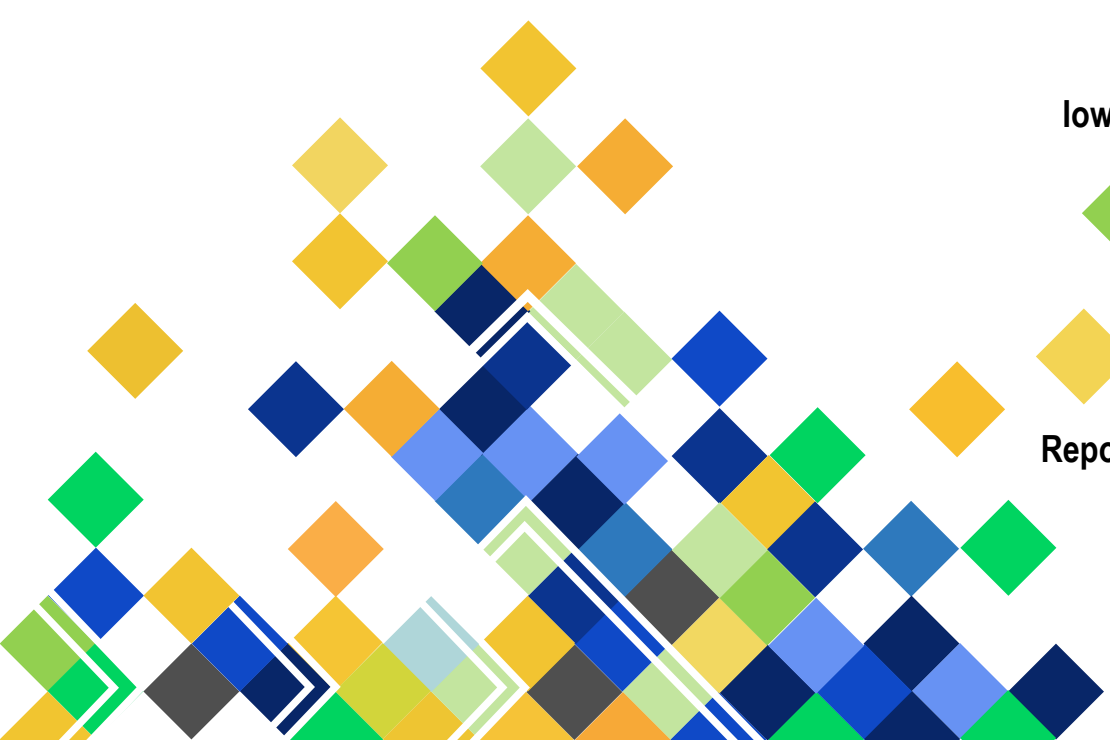
FIGURE 25: Comparison of Selected Data Points Between the State and the Nation

Variable ¹	Iowa	Nation
Total Active Nurse Licenses (RN & LPN) ²	61,473	5,201,316
Nurses per 100,000 Population	1,978.5	1,643.4
Percent Increase in Active RNs (2004-2014)	29.8%	36.6%
Percent Increase in Active LPNs (2004-2014)	14.4%	22.8%
RNs 39 and Younger	34.6%	35.3%
RNs 50 and Older	45.6%	42.1%
LPNs 39 and Younger	44.1%	37.5%
LPNs 50 and Older	36.7%	40.4%
Education		
RNs with a Baccalaureate Degree or Higher	45.1%	61.0%
Passing Rate for First-Time Test Takers of NCLEX®, RNs	82.0%	81.8%
Passing Rate for First-Time Test Takers of NCLEX®, LPNs	94.0%	82.2%
Breakdown of Enrollment in Nursing Programs by Type of Degree: Baccalaureate and Above		
Percent Enrolled within any Baccalaureate Program	67.5%	69.9%
Percent Enrolled within an RN-to-BSN Program	39.2%	28.5%
Percent Enrolled within a Master's Program	27.1%	24.9%
Percent Enrolled within a DNP Program	4.9%	4.0%
Breakdown of Graduates from Nursing Programs by Type of Degree: Baccalaureate and Above		
Percent Graduated from any Baccalaureate Program	74.1%	75.1%
Percent Graduated from an RN-to-BSN Program	42.0%	32.1%
Percent Graduated from a Master's Program	22.2%	22.4%
Percent Graduated from a DNP Program	3.7%	2.1%

¹Statewide variables, unless otherwise noted, reflect data for the year 2014. National data sources include: Age data: U.S. Census Bureau, American Community Statistics 2011-2013, 3-year estimates; Education data: National Council of State Boards of Nursing, Nurse Licensee Volume and NCLEX® Exam Statistics, 2004 & 2013; National Workforce Survey of Registered Nurses, 2013; NCLEX® Statistics, 2014; and Fang, D., Li, Y., Arietti, R., Trautman, D.E. (2015). 2014-2015 Enrollment and Graduation in Baccalaureate and Graduate Programs in Nursing. Washington, DC: American Association of Colleges of Nursing.

²Regarding the reported statewide number: licensees may or may not be actively employed in the State of Iowa.





**Iowa Center for Nursing Workforce
Iowa Board of Nursing**

400 S.W. 8th Street Suite B
Des Moines, IA 50309-4685

Tel: (515) 281-3255

Fax: (515) 281-4825

Web: nursing.iowa.gov

Report produced with assistance of:
Iowa Workforce Development
Labor Market Information Division